

Features

- 5 year battery life
- High speed download
- Miniature size
- Reusable
- Real-time operation
- Programmable engineering units
- User-friendly
- Low cost

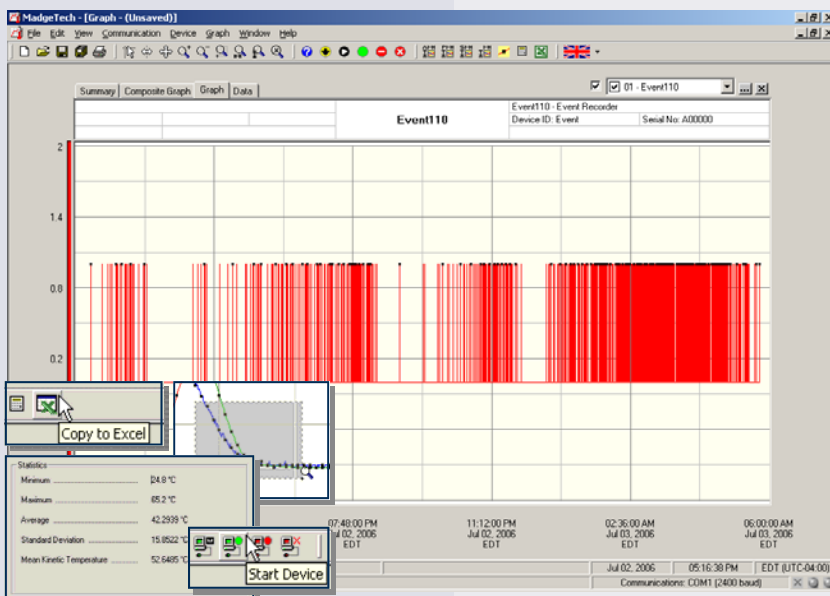
Applications

- Activity monitoring
- Advertising interest monitoring
- Animal habitat studies
- Occupancy studies
- Office space studies
- Traffic studies
- Security monitoring
- Marketing studies

The Motion110 is a miniature, low cost, recording device which senses motion and records time intervals during which motion occurs. The device can record up to 13,107 time stamped events and will not consume memory when it doesn't record motion.



Once activated the Motion110 senses and records transition or state changes at the input. The device's real-time clock ensures that all data is time and date stamped. The storage medium is non-volatile solid state memory, providing maximum data security even if the battery becomes discharged. The device can be started and stopped directly from your computer and its small size allows it to fit almost anywhere. The Motion110 makes data retrieval quick and easy. Simply plug it into an empty COM or USB port and our user-friendly software does the rest.



MadgeTech Data Recorder Software

displays event data in an easy to use graph.

The Windows®-based software package allows the user to effortlessly collect, display and analyze data. A variety of powerful tools allow you to examine, export, and print professional looking data with just a click of the mouse.

Click [MadgeTech Software](#) for more information or to download the software.

MOTION110 SPECIFICATIONS*

Detection Distance: 5M

Detection Range: >80°

Time Resolution: 1 second (reading rate dependent)

Engineering Units: Native measurement units can be scaled to display measurement units of another type. This is useful when monitoring voltage outputs from different types of sensors such as temperature

Real Time Recording: May be used with PC to monitor and record data in real time

Memory: 13,107 events; software configurable memory wrap

****Reading Interval:** 1 reading every second to 1 every 12 hours

Start Modes: Software programmable immediate start or delay start up to six months in advance

Visual Indicator: LED flashes to indicate events

Battery Type: 3.6V lithium battery included; user replaceable

Battery Life: 5 years typical at 25°C

Data Format: Date and time stamped events (true/false), user defined engineering units

Time Accuracy: ±1 minute/month (at 25 °C, RS232 cable not in use)

Computer Interface: PC serial or USB (interface cable required); 57,600 baud

Software: XP SP3/Vista/Windows 7

Operating Environment: -20 to +60°C, 0 to 95%RH non-condensing

Dimensions: 1.7" x 2.7" x 0.8"
(44mm x 69mm x 21mm)

Weight: 1.1 oz (30 g)

Materials: ABS plastic

Approvals: CE

BATTERY WARNING: FIRE, EXPLOSION, AND SEVERE BURN HAZARD. DO NOT RECHARGE, DISASSEMBLE, HEAT ABOVE 212°F, INCINERATE OR EXPOSE CONTENTS TO WATER.

***Device will record one event per user defined reading interval.*

SOFTWARE FEATURES

Multiple Graphs: Simultaneously analyze data from several units or deployments; easily switch to a single data series

Graphical Cursor: One click displays readings by time, value, parameter or sample number

Data Table: Instantly access tabular view for detailed dates, times, values, and annotations

Scaling Options: Autoscale function fits data to the screen, or allows user to manually enter their own values

Formatting Options: Change colors, line styles, plotting options, show or hide channels quickly

Statistics: Calculate averages, min, max, standard deviation, and mean kinetic temperature with the touch of a button

Export Data: Export data in a variety of common formats, or switch to Excel® with a single click

Calibration: Automatically calculate and store calibration parameters

Logger Configuration: Easy set up and launch of data loggers with immediate or delayed start, preferred sample rate, and device ID

Communications: Automatically sets up communications port, or lets user select configuration

*SPECIFICATIONS ARE SUBJECT TO CHANGE WITHOUT NOTICE.
SPECIFIC WARRANTY AND REMEDY LIMITATIONS APPLY.
CALL 1-603-456-2011 OR GO TO WWW.MADGETECH.COM FOR DETAILS.

ORDERING INFORMATION

<u>Model</u>	<u>Description</u>	<u>Price (U.S.)</u>
MOTION110	Motion Recorder with 5 year battery	\$249.00
IFC110	Software, manual and RS232 interface cable	\$99.00
IFC200	Software, manual and USB interface cable	\$119.00
LTC-7PN	Replacement battery for Motion110	\$10.00

For Quantity Discounts call 603-456-2011 or email sales@madgetech.com

ASK ABOUT OUR OTHER DATA RECORDERS

Temperature	Pulse/Event/State
Humidity	Low Level Current
Pressure	Low Level Voltage
pH	RF Transmitters
Level	Intrinsically Safe
Shock	Spectral Vibration
LCD Display	



DOC-1181009-00 REV E 2010.09.28