



CONFIGURATION

Configuration of the transmitter is possible in three different ways.

Via NFC

- Equipments:
- Smartphone or tablet with Android or iOS and NFC (Near Field Communication) function
  - Smartphone-App INOR Connect


Via Bluetooth

- Equipments:
- Smartphone or tablet with Android or iOS and Bluetooth function
  - Smartphone-App INOR Connect
  - INOR Bluetooth Configuration Kit, ICON-BT

Via PC

- Equipments:
- PC with Windows OS
  - PC Software INOR ConSoft
  - INOR USB Configuration Kit, ICON-X

CONFIGURATION via NFC



**CAUTION!**  
Configuration of the transmitter via NFC is only allowed when there are no Input/Output cables connected to the transmitter.

Preparations

- Download the app INOR Connect to your mobile device, it is available for both Android and iOS and is free to download and use.
- Make sure NFC communication is activated on your mobile device.



Scan the QR code to download and install the app INOR Connect

Configuration procedure

- Launch the app by clicking on the INOR Connect App icon, or by holding your mobile device's NFC area close to the transmitter's NFC-antenna for auto launch (auto launch is only possible with Android).
- Click on "Read Configuration" and hold your mobile device against the transmitter's NFC-area for reading the transmitter settings.
- In the app you can edit and configure all the transmitter settings, such as type of input sensor, measuring range, upscale or downscale error indication, etc.



INOR Connect



Read Configuration

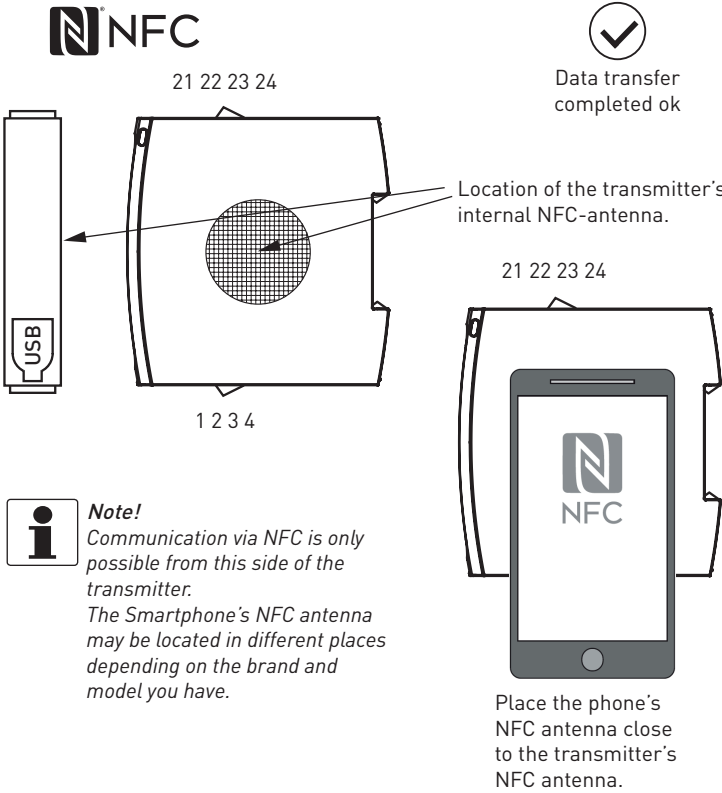
- Once you have set the values for the transmitter in the app, you transfer it to the transmitter by clicking the transfer button and holding the mobile device against the transmitters NFC-area until a green check box appears confirming that the transfer has been completed.



Transfer button



Data transfer completed ok



Please consult the specific NFC Quick Start Guide for more guidance if needed.

LIMITED WARRANTY

INOR Process AB, or any other affiliated company within the Inor Group (hereinafter jointly referred to as "Inor"), hereby warrants that the Product will be free from defects in materials or workmanship for a period of five (5) years from the date of delivery ("Limited Warranty"). This Limited Warranty is limited to repair or replacement at Inor's option and is effective only for the first end-user of the Product. Upon receipt of a warranty claim, Inor shall respond within a reasonable time period as to its decision concerning:

- Whether Inor acknowledges its responsibility for any asserted defect in materials or workmanship; and, if so,
- the appropriate cause of action to be taken (i.e. whether a defective product should be replaced or repaired by Inor).

This Limited Warranty applies only if the Product:

- is installed according to the instructions furnished by Inor;
- is connected to a proper power supply;
- is not misused or abused; and
- there is no evidence of tampering, mishandling, neglect, accidental damage, modification or repair without the approval of Inor or damage done to the Product by anyone other than Inor.


This Limited Warranty is provided by Inor and contains the only express warranty provided.

**INOR SPECIFICALLY DISCLAIMS ANY EXPRESS WARRANTY NOT PROVIDED HEREIN AND ANY IMPLIED WARRANTY, GUARANTEE OR REPRESENTATION AS TO SUITABILITY FOR ANY PARTICULAR PURPOSE, PERFORMANCE, QUALITY AND ABSENCE OF ANY HIDDEN DEFECTS, AND ANY REMEDY FOR BREACH OF CONTRACT, WHICH BUT FOR THIS PROVISION, MIGHT ARISE BY IMPLICATION, OPERATION OF LAW, CUSTOM OF TRADE OR COURSE OF DEALING, INCLUDING IMPLIED WARRANTIES OF MER-CHANTABILITY AND FITNESS FOR A PARTICULAR PURPOSE. EXCEPT AS PROVIDED HEREIN, INOR FURTHER DISCLAIMS ANY RESPONSIBILITY FOR LOSSES, EXPENSES, INCONVENIENCES, SPECIAL, DIRECT, SECONDARY OR CONSEQUENTIAL DAMAGES ARISING FROM OWNERSHIP OR USE OF THE PRODUCT.**

Products that are covered by the Limited Warranty will either be repaired or replaced at the option of Inor. Customer pays freight to Inor, and Inor will pay the return freight by post or other "normal" way of transport. If any other type of return freight is requested, customer pays the whole return cost.

CONFIGURATION via Windows PC

MiniPAQ R230 can be configured from a Windows PC with the PC software ConSoft, the transmitter is connected to the PC via INOR USB communication interface, ICON-X. The USB-Interface and all necessary cables are included in the Transmitter Configuration Kit, ICON-X



**INFORMATION!**  
Consult the specific manual for ICON-X for a detailed description about installation and usage.

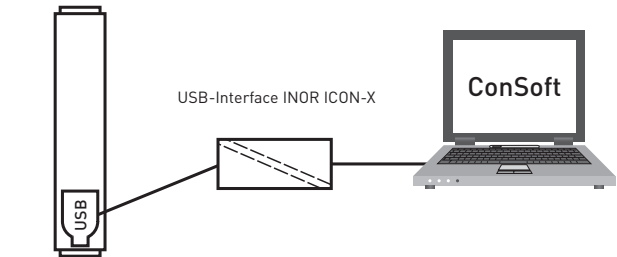
Here is a short form guide:

Preparations

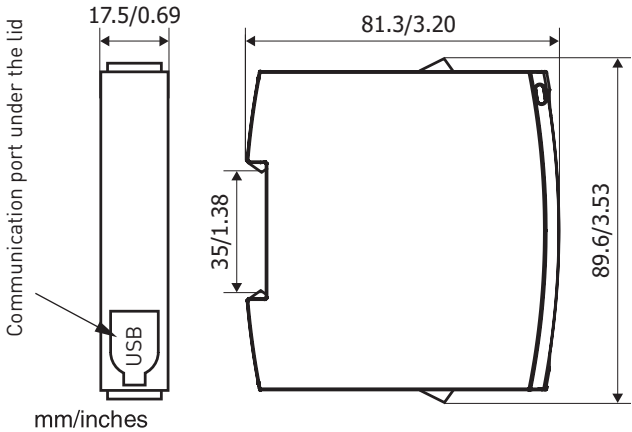
- Install software ConSoft on your PC, ConSoft can be downloaded for free from our website's download section.

Configuration procedure

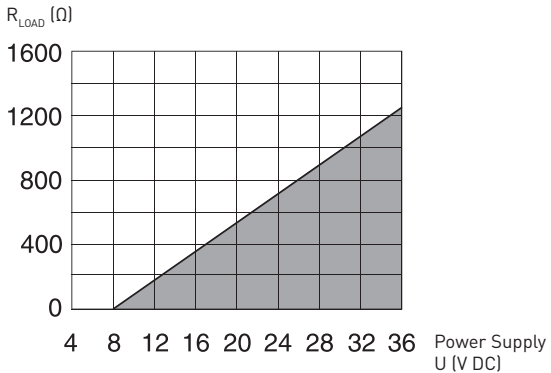
- Connect the MiniPAQ R230 to the PC via the USB interface with the included USB-cables. Configuration can be performed with or without connected power supply to the transmitter.
- Start ConSoft and click on the "Read Configuration" button. The software will recognize the connected transmitter and open the C / R230 configuration window with the transmitter's current settings after uploading.
- Edit the transmitter settings to your requirements.
- The configuration is downloaded to the transmitter by clicking the button "Write to transmitter".



DIMENSIONS



OUTPUT LOAD DIAGRAM



Maximum load is depending on power supply.  
Formula for the max. permissible output load is:  $R_{LOAD} (\Omega) = (U-8)/0.022$

CONFIGURATION via Bluetooth

Configuration via Bluetooth requires the Bluetooth-modem ICON-BT to be connected to the transmitter's USB-port. Modem and cables are included in the configuration kit ICON-BT.

Consult the ICON-BT Quick Start guide for description about installation and usage.

Here is a short form guide:


- Insert two AAA batteries into the ICON-BT interface.
- Install the Smartphone-app INOR Connect.
- Set Bluetooth communication to ON in your smartphone.
- Connect the ICON-BT Bluetooth modem to the transmitter using the supplied cable, see image below.
- Start INOR Connect on your device.
- When selecting Read Configuration or Monitoring, the app will scan for available Bluetooth devices and show them in a list. Click on the device you want to connect to. The name of your ICON-BT modem is the same as its serial number, which can be found on the product label on the ICON-BT modem.



ORDERING INFORMATION


<b>Transmitter</b>	
MiniPAQ R230	70R2300011
<b>Configuration tools</b>	
ICON-X, PC Configuration kit	70CFGUSX01
ICON-BT, Bluetooth® configuration kit	70CFGBT001
PC Software ConSoft	www.inor.com
Smartphone-app INOR Connect	Google Play App Store AppGallery

DISPOSAL



**LEGAL NOTICE!**  
Disposal must be carried out in accordance with legislation applicable in your country.

Separate collection of WEEE (Waste Electrical and Electronic Equipment):

 According to the directive 2012/19/EU or UK Regulation 2013 No. 3113, the monitoring and control instruments marked with the WEEE symbol and reaching their end-of-life **must not be disposed of with other waste.** The user must dispose of the WEEE to a designated collection point for the recycling of WEEE or send them back to our local organisation or authorised representative.