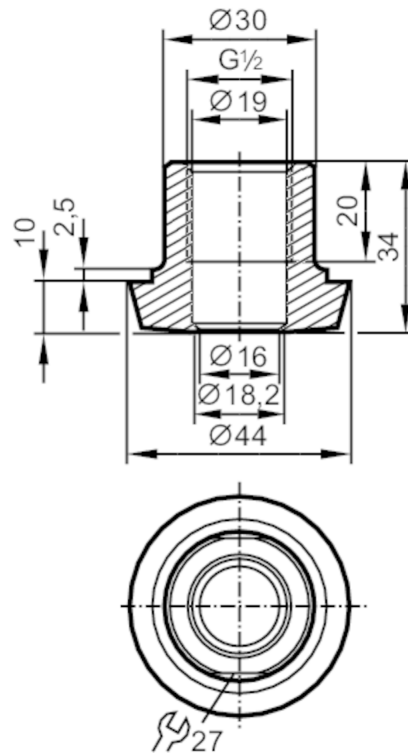


Process adapter hygienic pipe fitting

ADAPT G1/2-DIN11851 DN25



EC 1935/2004 FCM FDA

Application		
Pressure rating	40 bar	4 MPa
Tests / approvals		
Pressure Equipment Directive	A possible classification to PED depends on the application and has to be carried out by the user / operator.	
Safety instructions	The compatibility between medium and product material has to be checked in all applications.	
Mechanical data		
Weight	[g]	219.5
Materials	process adapter: stainless steel (316L/1.4435) surface characteristics: Ra < 0,4 µm / Rz 4 µm	
Sensor connection	G 1/2 sealing cone	
Process connection	hygienic pipe fitting DN25 (1") DIN 11851	
Surface characteristics Ra/Rz of the wetted parts	Ra < 0.4 µm / Rz = 4 µm	
Hygienic equipment class to DIN 11866	H4	
Remarks		
Pack quantity	1 pcs.	