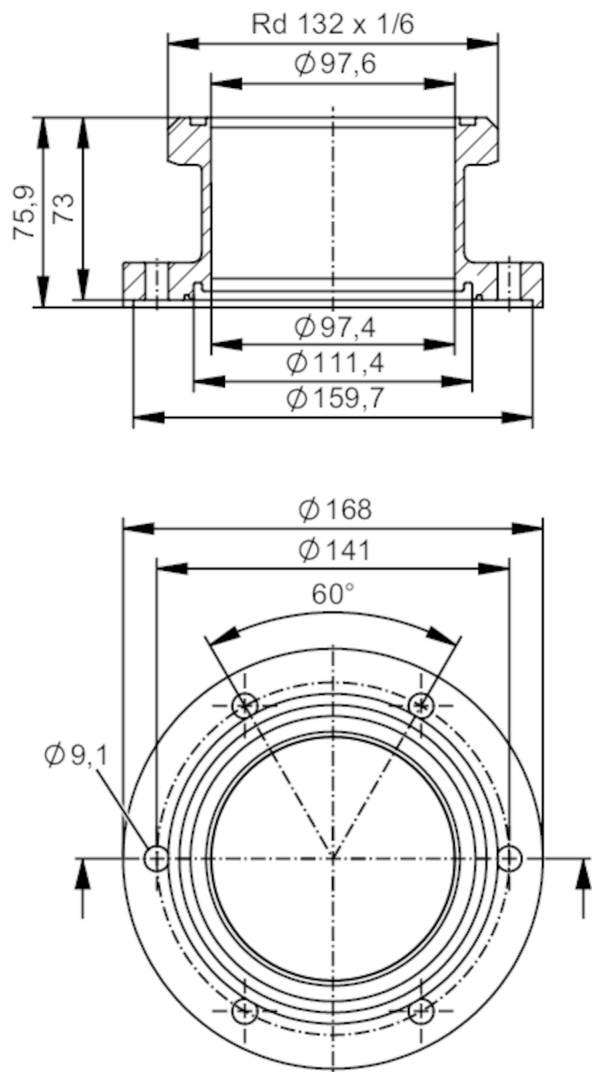




Process adapter SMS 1145

ADAPT SMS1145 DN100



EC 1935/2004 FCM FDA

Application		
Design	for volumetric flow meters SMF	
Application	food and beverage industry; hygienic systems	
Pressure rating	16 bar	1.6 MPa
Tests / approvals		
Pressure Equipment Directive	A possible classification to PED depends on the application and has to be carried out by the user / operator.	
Safety instructions	The compatibility between medium and product material has to be checked in all applications.	
Mechanical data		
Weight	[g]	6619.4
Housing	cylindrical	
Dimensions	[mm]	Ø 168 / L = 75.9
Materials	stainless steel (316L/1.4404)	

E40516



Process adapter SMS 1145

ADAPT SMS1145 DN100

Nominal diameter	DN100 (4")
Sensor connection	ifm-specific device flange
Process connection	SMS 1145
Process connection suitable for pipe standard	(ISO 2037); (BS 4825 Part 1); (JIS G3447); (DIN EN 10357 series D)
Surface characteristics Ra/Rz of the wetted parts	Ra < 0.4 µm
Accessories	
Items supplied	screws 12
Remarks	
Pack quantity	2 pcs.