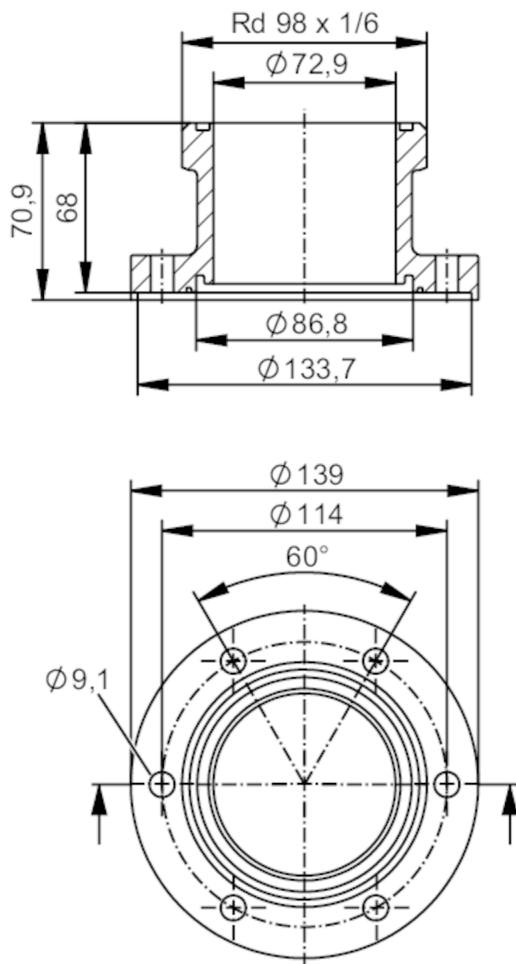




Process adapter SMS 1145

ADAPT SMS1145 DN80



Application		
Design	for volumetric flow meters SMF	
Application	food and beverage industry; hygienic systems	
Pressure rating	16 bar	1.6 MPa
Tests / approvals		
Pressure Equipment Directive	A possible classification to PED depends on the application and has to be carried out by the user / operator.	
Safety instructions	The compatibility between medium and product material has to be checked in all applications.	
Mechanical data		
Weight	[g]	5214.4
Housing	cylindrical	
Dimensions	[mm]	Ø 139 / L = 70.9
Materials	stainless steel (316L/1.4404)	
Nominal diameter	DN80 (3")	
Sensor connection	ifm-specific device flange	

E40515



Process adapter SMS 1145

ADAPT SMS1145 DN80

Process connection	SMS 1145
Process connection suitable for pipe standard	(ISO 2037); (DIN EN 10357 series C); (DIN EN 10357 series D)
Surface characteristics Ra/Rz of the wetted parts	Ra < 0.4 µm
Accessories	
Items supplied	screws 12
Remarks	
Pack quantity	2 pcs.