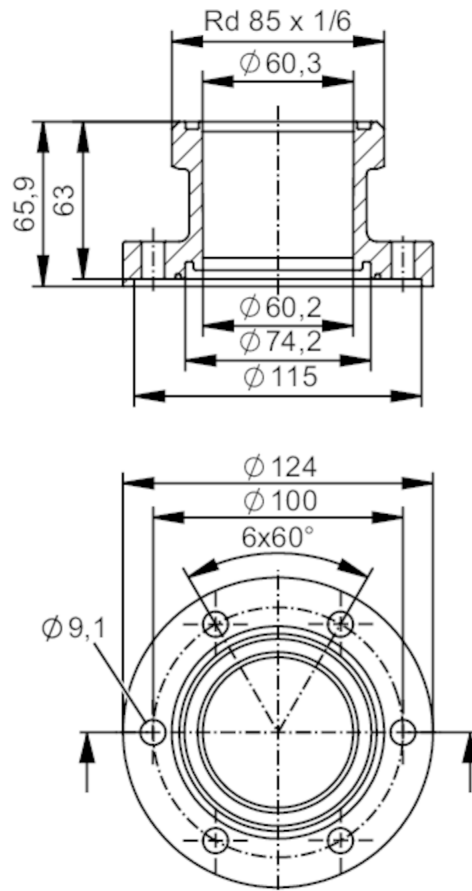




Process adapter SMS 1145

ADAPT SMS1145 DN65



Application		
Design	for volumetric flow meters SMF	
Application	food and beverage industry; hygienic systems	
Pressure rating	16 bar	1.6 MPa
Tests / approvals		
Pressure Equipment Directive	A possible classification to PED depends on the application and has to be carried out by the user / operator.	
Safety instructions	The compatibility between medium and product material has to be checked in all applications.	
Mechanical data		
Weight	[g]	4521.1
Housing		cylindrical
Dimensions	[mm]	Ø 124 / L = 65.9
Materials		stainless steel (316L/1.4404)
Nominal diameter		DN65 (2 1/2")
Sensor connection		ifm-specific device flange
Process connection		SMS 1145

E40514



Process adapter SMS 1145

ADAPT SMS1145 DN65

Process connection suitable for pipe standard	(ISO 2037); (BS 4825 Part 1); (DIN EN 10357 series C); (DIN EN 10357 series D)
Surface characteristics Ra/Rz of the wetted parts	Ra < 0.4 µm
Accessories	
Items supplied	screws 12
Remarks	
Pack quantity	2 pcs.