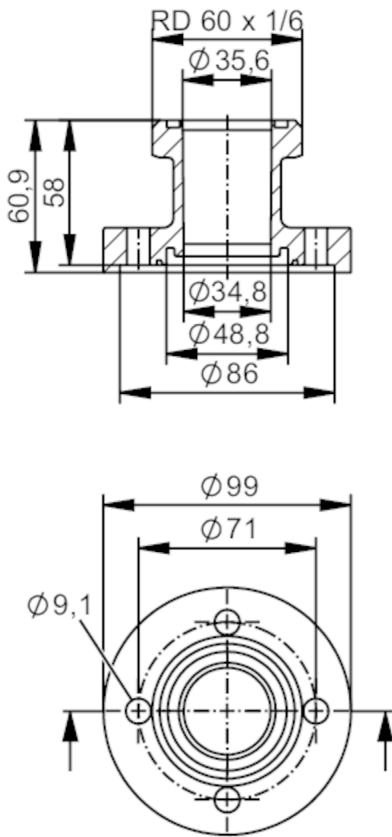




Process adapter SMS 1145

ADAPT SMS1145 DN40



| Application | | |
|---|---|-----------------|
| Design | for volumetric flow meters SMF | |
| Application | food and beverage industry; hygienic systems | |
| Pressure rating | 16 bar | 1.6 MPa |
| Tests / approvals | | |
| Pressure Equipment Directive | A possible classification to PED depends on the application and has to be carried out by the user / operator. | |
| Safety instructions | The compatibility between medium and product material has to be checked in all applications. | |
| Mechanical data | | |
| Weight | [g] | 2751.4 |
| Housing | cylindrical | |
| Dimensions | [mm] | Ø 99 / L = 60.9 |
| Materials | stainless steel (316L/1.4404) | |
| Nominal diameter | DN40 (1 1/2") | |
| Sensor connection | ifm-specific device flange | |
| Process connection | SMS 1145 | |
| Process connection suitable for pipe standard | (ISO 2037); (JIS G3447); (DIN EN 10357 series D) | |

E40512



Process adapter SMS 1145

ADAPT SMS1145 DN40

| | |
|---|-------------|
| Surface characteristics Ra/Rz of the wetted parts | Ra < 0.4 µm |
| Accessories | |
| Items supplied | screws 8 |
| Remarks | |
| Pack quantity | 2 pcs. |