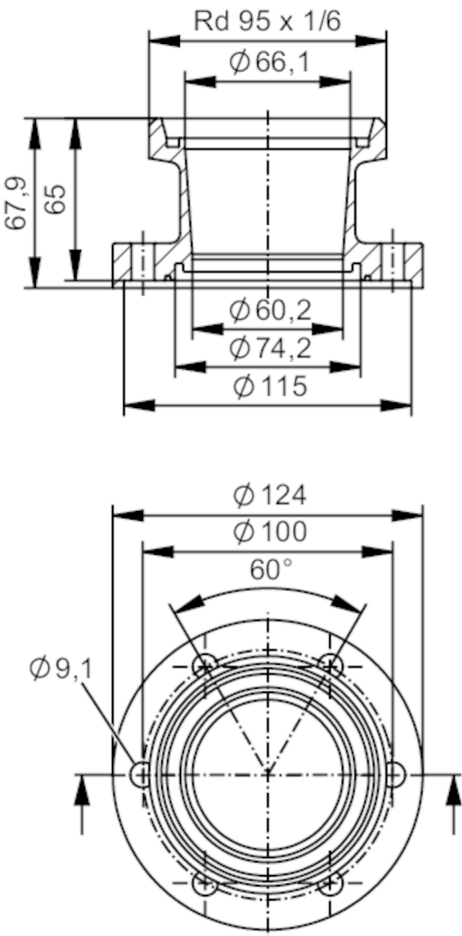




Process adapters pipe fitting DIN11851

ADAPT DIN11851 DN65



Application		
Design	for volumetric flow meters SMF	
Application	food and beverage industry; hygienic systems	
Pressure rating	25 bar	2.5 MPa
Tests / approvals		
Pressure Equipment Directive	A possible classification to PED depends on the application and has to be carried out by the user / operator.	
Safety instructions	The compatibility between medium and product material has to be checked in all applications.	
Mechanical data		
Weight	[g]	4228.1
Housing		cylindrical
Dimensions	[mm]	Ø 124 / L = 67.9
Materials		stainless steel (316L/1.4404)
Nominal diameter		DN65 (2 1/2")
Sensor connection		ifm-specific device flange
Process connection		hygienic pipe fitting DIN 11851

E40504



Process adapters pipe fitting DIN11851

ADAPT DIN11851 DN65

Process connection suitable for pipe standard	(DIN EN 10357 series A); (DIN 11866 series A); (DIN 11850 series 2)
Surface characteristics Ra/Rz of the wetted parts	Ra < 0.4 µm
Accessories	
Items supplied	screws 12
Remarks	
Pack quantity	2 pcs.