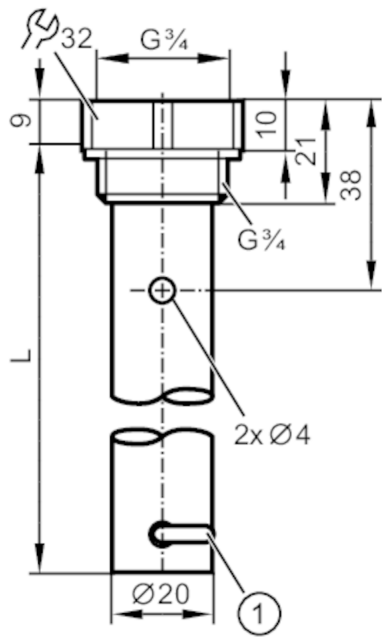




Coaxial tube for level sensors

LR COAX TUBE G3/4 L1000/2BORES



1 Fixing bracket for centring piece

Application		
Design	Version without holes, for level sensors, LR	
Medium temperature	[°C]	-40...200
Pressure rating	16 bar	1.6 MPa
Vacuum resistance	-1000 mbar	-0.1 MPa
Mechanical data		
Weight	[g]	600
Material	Coaxial tubes for level sensors: stainless steel (1.4301 / 304); sealing: NBR fiber-reinforced; centring piece: PPS fiber-reinforced; fixing bracket: stainless steel (1.4310 / 301)	
Sensor connection	threaded connection G 3/4 Internal thread	
Process connection	threaded connection G 3/4 external thread	
Length L	[mm]	1000
Accessories		
Items supplied	sealing: 1	
Accessories (optional)	Centering piece for coaxial tubes: 1, E43222	
Remarks		
Pack quantity	1 pcs.	