

9900 Transmitter Protection Cover

Quick Start Leaflet

159000198 3-9000.397
06.2025

© Georg Fischer Signet LLC 5462 N. Irwindale Avenue,
Irwindale, CA 91706 U.S.A.
Tel. (626) 571-2770
www.gfps.com
info.ps@georgfischer.com

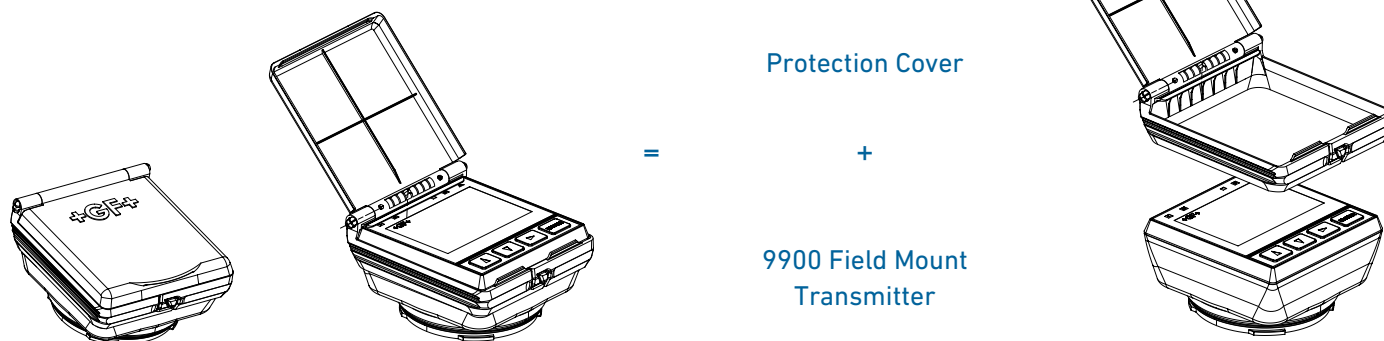
+GF+

Installation Video



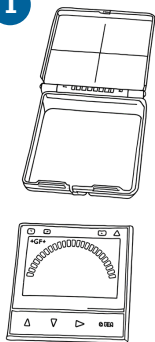
CE
UK
CA

Compatibility



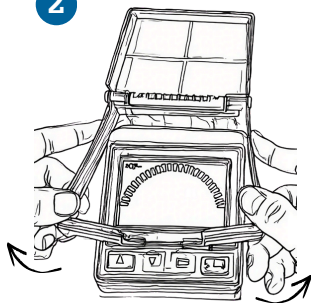
Install

1



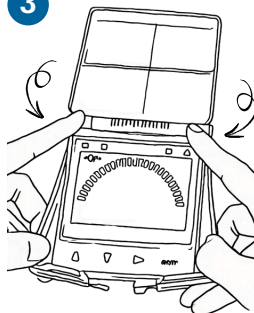
Open front cover
before installation

2



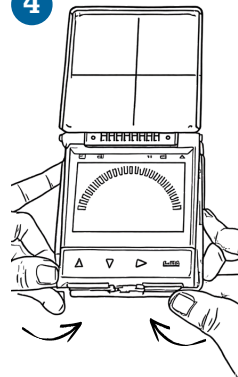
Gently fit back legs -
don't overbend

3



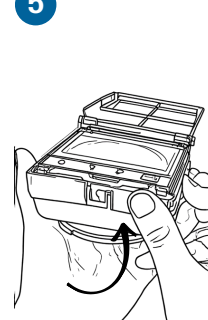
Insert top of cover into
transmitter first

4



Fit the cover
completely

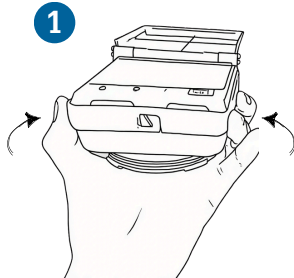
5



Latch back legs
together securely

Remove

1



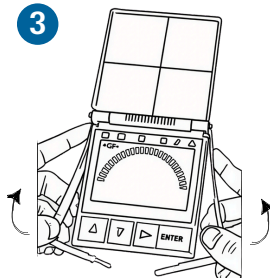
Squeeze both legs to
loosen latches

2



Press one latch, pull hook
on other to release

3



Remove bottom of back
cover first, then top

