

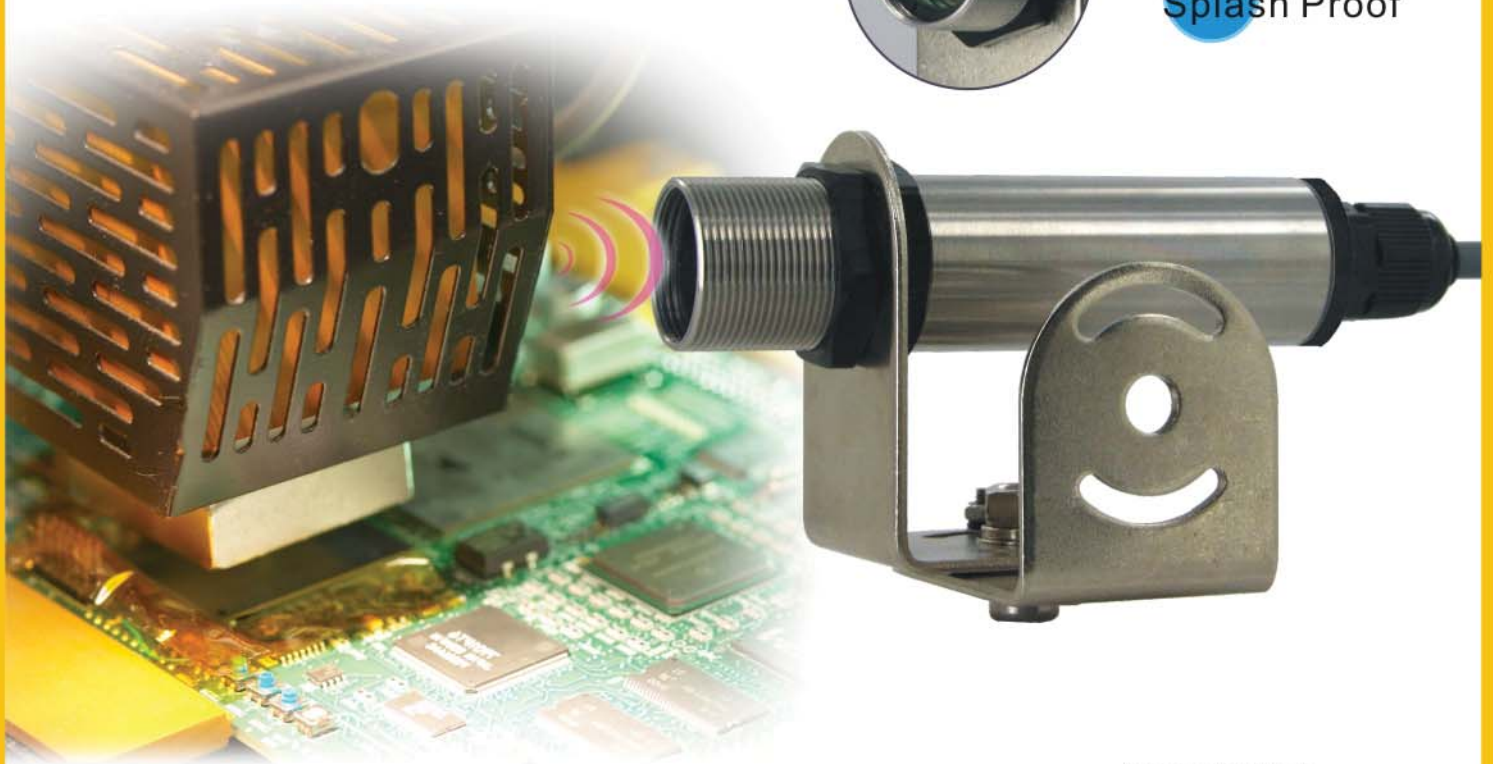
Fixed Infrared Sensors

ZF210C

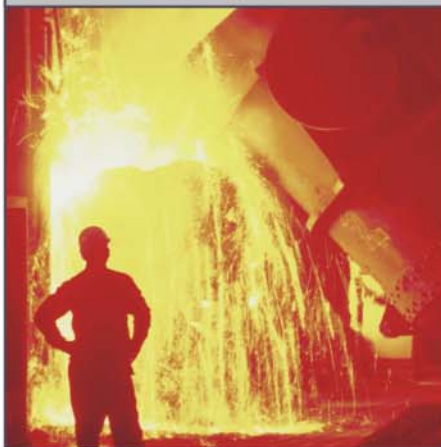
- Small and robust infrared temperature sensor
- 2-wire installation
- Linear current output
- Easy installation and connection



IP 65
Splash Proof



Working environment
temperature higher than 40°C



Semiconductor/ Automation
LCD/ Print/ Foods



Analog Output



Digital Output



Specifications

Spectral range
8 ~14 μm
Distance:Spot Size
12 : 1
Output Temperature range
0°C ~400°C(0.04mA/°C)/ 32°F~752°F(0.017mA/°F)
Analog output
4~20mA ; linear to temperature
Loop impedance
Max. 700 Ohms@24VDC; Min. 100 Ohms recommended
Max. 150 Ohms@12VDC; Min. 100 Ohms recommended
Emissivity
Fixed at 0.95
Response time
300 ms
Accuracy
2.0% of reading or 2.0°C/3.6 °F, whichever is greater
Repeatability
1% of measured value or 1°C/ 1.8°F, whichever is greater
Warm up time
10 minutes
Connection cable
1 m length, PVC
Power supply
24 V DC(12VDC~24VDC) @20 mA , Ripple< 2.5%
Ambient temperature
0°C ~ 70°C /32 ~ 158°F
Storage temperature
- 30 ~ 85°C/-22 ~ 185°F
Housing
Stainless Steel Tube
Mounting Nut
M22
Dimensions/ Weight
L=91 mm x Φ =22 mm / 158 g
Enclosure rating
IP 65 (according DIN 40 050)
Vibration
IEC68-2-27 (MIL STD 810D), any axis, 11 to 200 Hz, 3G
Shock
IEC68-2-27(MIL STD 810D), any axis, 11 ms, 50G

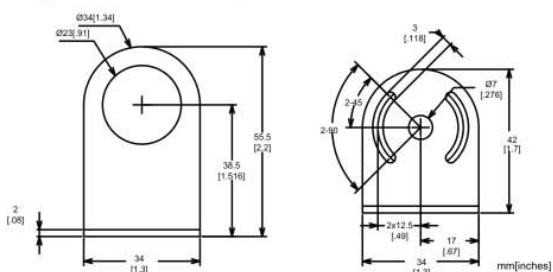
Specifications are subject to change without notice.

■ Installation Instruction:

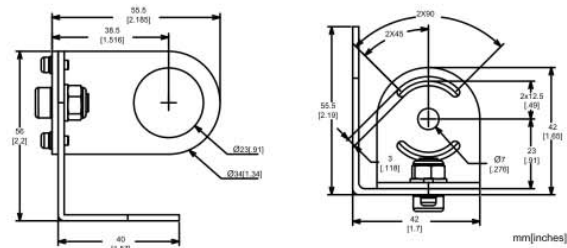
The installation process contains two parts:

- 1.Bracket installation
- 2.Sensor parts assembly

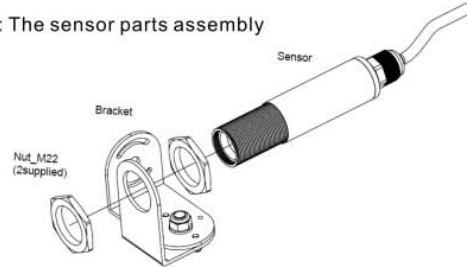
Step 1: Fixed Mounting Bracket



Step 2: Adjustable Mounting Bracket

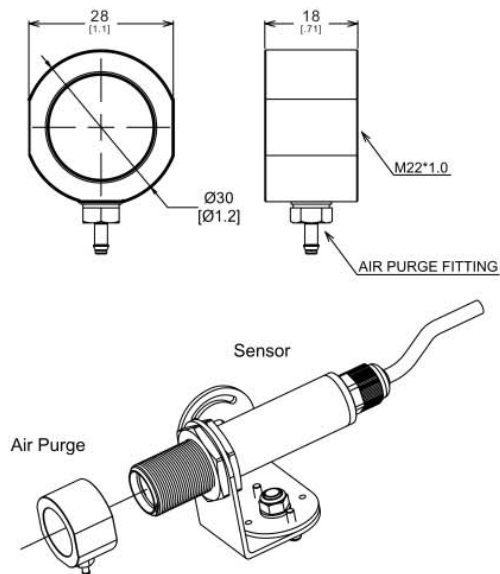


Step 3: The sensor parts assembly

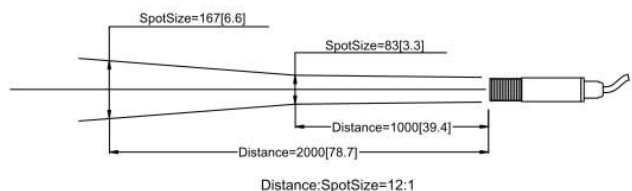


Step4:Accessories Installation

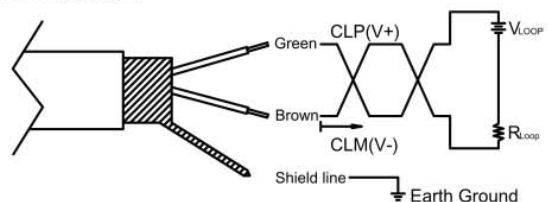
The working environment is with dust, smoke will dirty up the optical lens, and will influence the temperature readings, In order to keep the surface of the optical lens clean, the option accessory of air purge collar is recommend, see fig 4 (Air Purge accessories and option), Please refer to the following pictures:



■ FOV(Field Of View)



■ Wire connection



Wire No	Wire Color	Label	Function
1	Green	CLP	Current Loop plus(V+)
2	Brown	CLM	Current Loop minus(V-)
3	Bare	-	Shield Ground