

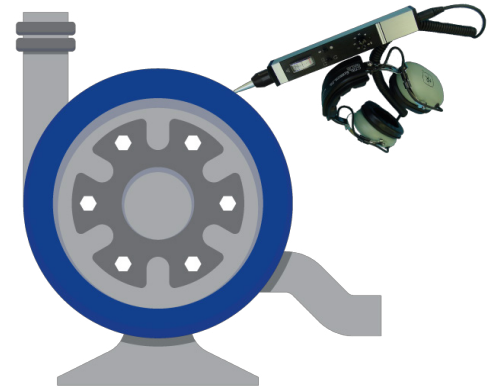
ULTRASOUND DETECTION ORDERING GUIDE



UDK-CM Condition Monitoring Kit

Easily distinguish the different sounds produced by bearings and gearboxes in different conditions such as under lubrication, over lubrication, and excessive wear. Structure-borne ultrasound is detected when solid probes make contact with the machinery housing. Readings are uploaded to the cloud for app-based tracking and analysis. Kit includes all components for valve and steam trap monitoring too.

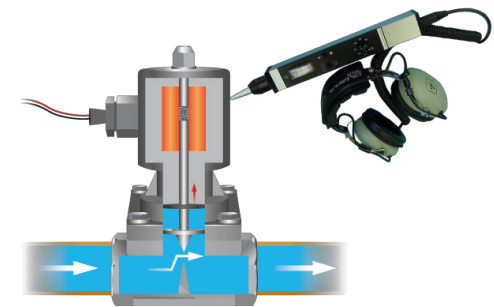
[See the complete UDK-CM kit.](#)



UDK-VL Valve and Steam Trap Monitoring Kit

Detect internal bypass leaks and diagnose operating condition. Solid probes in contact with the valve, steam trap, or hydraulic lines detect ultrasound and convert it to audible sound for easy location and detection.

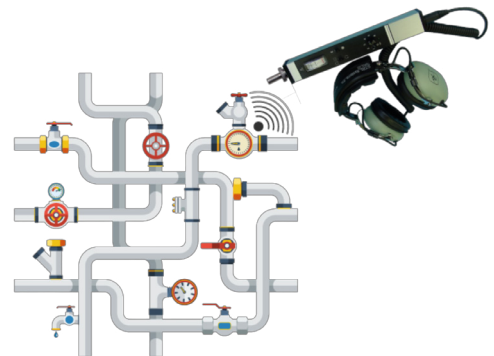
[See the complete UDK-VL kit.](#)



UDK-LK Leak Detection Kit

Indicate and locate pressurized and non-pressurized system leaks. Acoustic probes and concentrators detect airborne ultrasound from turbulent flow leaks of any type of gas from vacuums, valves, steam systems, HVAC systems, and sealed cabins or containers. Kit includes all components for electrical safety inspection too.

[See the complete UDK-LK kit.](#)



UDK-EI Electrical Inspection Kit

Detect arcing, tracking, and corona discharge in low, medium, or high voltage settings. Concentrators make it possible to detect airborne ultrasound from discharge from a safe distance, up to 150' and without opening electrical panels.

[See the complete UDK-EI kit.](#)



	Applications				Included items				
	Condition monitoring	Valve and steam trap monitoring	Leak detection	Electrical inspection	Ultrasound receiver and headset	Metal probe set	Acoustic extension probe set	Concentrator set	Condition monitoring app
UDK-CM Condition Monitoring Kit	X	X			X	X			X
UDK-VL Valve and Steam Trap Monitoring Kit		X			X	X			
UDK-LK Leak Detection Kit			X	X	X		X	X	
UDK-EI Electrical Inspection Kit				X	X			X	

ULTRASOUND SOLUTIONS FOR CONDITION MONITORING AND LEAK DETECTION



Ultrasound receiver and headset

The ultrasound receiver detects ultrasound produced by mechanical, pneumatic, hydraulic, and electrical systems and converts it to audible sound. Leaks are easily pinpointed. Electrical issues are safely exposed. Equipment problems such as bearing wear are diagnosed, complementing traditional vibration monitoring to enhance condition-based maintenance programs.



Solid probe set | 4 pieces

Solid probes detect structure-borne ultrasound when placed in contact with the monitored structure. The set includes 3", 5", 8", and 13" probes for hard-to-reach areas. Both the [UDK-CM Condition Monitoring Kit](#) and [UDK-VL Valve and Steam Trap Monitoring Kit](#) include the solid probe set.



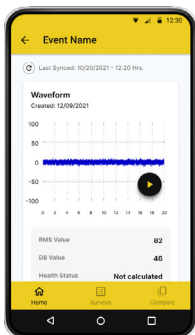
Acoustic extension probe set | 5 pieces

Acoustic extension probes detect airborne ultrasound from turbulent flow leaks and electrical discharge. Three metal probes can be used in isolation or combined for a 36" reach. A 12" polycarbonate probe enables safe electrical inspection. The full acoustic probe set is included in the [UDK-LK Leak Detection Kit](#).



Concentrators set | 3 pieces

Acoustic concentrators detect airborne ultrasound from electrical discharges up to 150' away. It is not necessary to remove electrical panel covers or approach high voltage power lines. An acoustic tip, mini concentrator, and large concentrator are included in the [UDK-LK Leak Detection Kit](#) and [UDK-EI Electrical Inspection Kit](#).



Cloud-based condition monitoring app | 1-year subscription

The condition monitoring app synchronizes data from the ultrasound receiver to the cloud in real time via a mobile phone. It organizes, locates, and analyzes audio files across multiple users and multiple sites for unlimited assets and monitoring points. Sound analysis is automated, with notifications that indicate bearing condition and fault frequencies. A one-year subscription is included with the [UDK-CM Condition Monitoring Kit](#).

Parabolic range extender | Optional

Enhance the UKD-EI kit with an optional parabolic range extender that enables safe powerline inspection from up to 300' away.

