

AIRASSURE™ INDOOR PM2.5 MASS CONCENTRATION MONITOR MODEL IPM2.5-NA

REAL-TIME IAQ MONITORING
THAT YOU CAN TRUST

Only AirAssure™ PM2.5 Indoor Air Quality (IAQ) Monitor can provide real-time, reliably accurate measurement of PM2.5 dust concentrations inside commercial buildings. An easy-to-read digital display provides quick reference and interpretation of data. A simple dashboard interface enables convenient monitoring of multiple networked units. All this in a unit that requires minimal maintenance, promises long-term performance, and includes NIST traceable calibration for the satisfaction of tenants, employees, and building owners. The AirAssure Monitor is the ONLY cost effective on-the-wall instrument to meet the needs of ALL the stakeholders in a building.



Features and Benefits

- + Ideal for commercial buildings
- + Simple wall mount installation
- + Analog and ethernet output available
- + Measures PM2.5 dust concentrations
- + At-a-glance interpretation of data, correlates to the Air Quality Index
- + Patent-pending auto-zero mechanism ensures consistently accurate performance
- + Field-serviceable
- + NIST traceable calibration

AirAssure PM2.5 IAQ Monitor Package Includes

- + Wall-mountable PM2.5 monitor
- + Optional mounting base plate
- + Mounting template
- + Mounting hardware
- + NIST Statement of Conformance
- + Quick installation guide

MEETS THE NEEDS OF ALL BUILDING STAKEHOLDERS

+ For Occupants

A measurement they can trust, in an easy-to-read color coded, digital display.

+ For Building Managers

A low maintenance unit with patented measurement stability and a simple dashboard interface that enables convenient monitoring of multiple networked units.

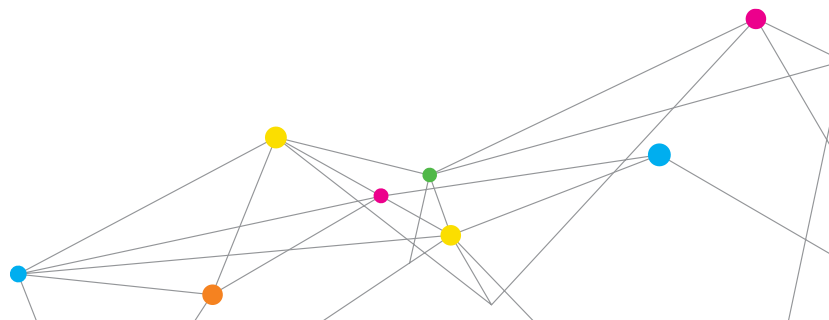
+ For Building Owners/Employers

Accurate measurement and demonstrated indoor air quality helps to retain employees and improve occupancy rates with the promise of a safe, healthy indoor environment.

PLEASE NOTE - This instrument is not currently available for sale in Europe.



UNDERSTANDING, ACCELERATED



SPECIFICATIONS

AIRASSURE™ INDOOR PM2.5 MASS CONCENTRATION MONITOR MODEL IPM2.5-NA

Sensor Type

Light scattering photometer

Aerosol Concentration Range

5 to 300 $\mu\text{g}/\text{m}^3$

Display Readings

PM2.5 mass concentration and color change to represent Air Quality Index

Screen Resolution

1 $\mu\text{g}/\text{m}^3$ increments

Zero Stability

$\pm 10 \mu\text{g}/\text{m}^3$

Operational Temperature

10 to 30°C

Storage Temperature

-10 to 50°C

Operational Humidity

Less than 65% RH

Time Constant

5 minute trailing average, screen updates every 1 second

Physical Size

Dimensions (HWD)	16.2 cm x 8.5 cm x 3.3 cm (6.4 in. x 3.4 in. x 1.3 in.)
Depth including connector	3.8 cm (1.5 in.)

Communications

- + Ethernet
- + Analog (4-20mA)

Power

24 volt (AC or DC), 5W max

Screen

4.3 in. color LCD display

Weight

- + 0.2 kg (0.5 lb)
- + Packaged: 0.5 kg (1.0 lb)

Calibration

Pre-calibrated sensor with NIST Statement of Conformance

Language

- + English
- + Simplified Mandarin

Mounting

- + Wall mount
- + Type 86 gang box
- + American single gang box

Service

- + Local service available
- + Sensor and some key components are field-serviceable

Web App

- + Ethernet connection
- + Password protection capability
- + Data export capability
- + Supports up to 99 sensors
- + Compatible with mobile devices
- + Located on local server
- + Display measurement on remote screen
- + Output coordinated to Air Quality Index color rating
- + Supports Windows® 7, 8.1

Service Kits

- + IPM2.5-SENS - Calibrated replacement sensor
- + IPM2.5-KIT - Replacement pump, fan, and filter kit

TSI, and the TSI logo are registered trademarks, and AirAssure is a trademark of TSI Incorporated

Windows is a registered trademarks of Microsoft Corporation in the United States and/or other countries.



UNDERSTANDING, ACCELERATED

TSI Incorporated - Visit our website www.tsi.com for more information.

USA	Tel: +1 800 874 2811	India	Tel: +91 80 67877200
UK	Tel: +44 149 4 459200	China	Tel: +86 10 8219 7688
France	Tel: +33 1 41 19 21 99	Singapore	Tel: +65 6595 6388
Germany	Tel: +49 241 523030		