

## ShockLog iButton Guide

The ShockLog family of products allows for an efficient method of communication through an iButton interface. This interface allows users to perform basic ShockLog operations without a PC connection. iButtons are available to setup, start, stop, set clock and download the ShockLog report.

The iButton interface serves as the link between iButtons and a PC.

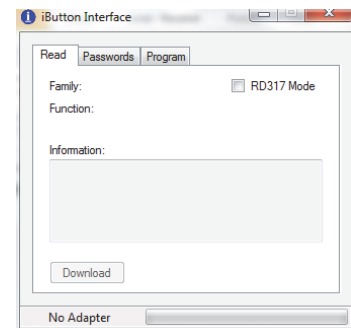
The iButton Interface window is accessed via the “View” menu. Within this window users are presented with three tabs: Read, Passwords and Program.

### Read

Read is the first tab presented to users after opening the iButton interface. This screen is used to read what is on an attached iButton. The iButton USB connector should be plugged into the PC. It may be necessary to download drivers, but the download process is similar to the process described in the Software Installation section of the ShockLog Essentials Manual.

When an iButton is plugged into the connector bus, the software will display the type of iButton being read and whether there is data on the device.

(If the user is using an iButton originally set up for the legacy RD317 products, a warning will appear stating that the iButton is for an RD317 and asking “do you wish to change to RD317 mode?” By selecting “Yes”, the RD317 mode tick box will be completed and any programming of the iButton will be created in the RD317 compatibility mode. If a new iButton is being set up, and it is desirable to use it with a legacy RD317 unit, it is necessary to select the RD317 Mode box before proceeding to ensure the iButton is setup correctly for use with the older products.)

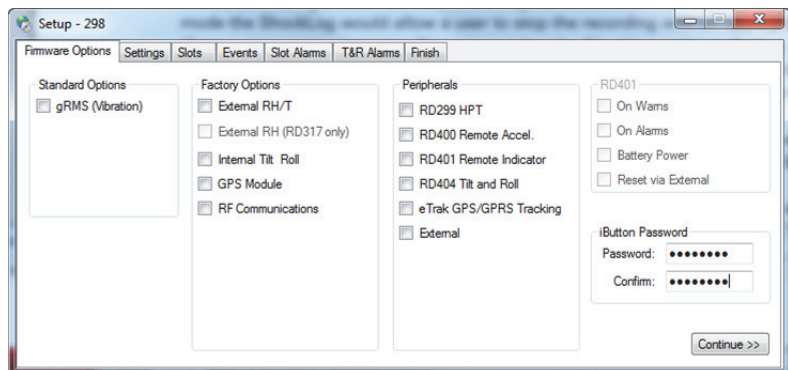


### Passwords

#### iButton Passwords

With iButtons and ShockLog units, there are two levels of password protection. The iButton password is the first level and is user definable. The ShockLog password is the second level and is factory set. **The ShockLog password cannot be changed by the user.**

The iButton passwords must be less than 8 characters and are set on the “Firmware Options” tab of the ShockLog Setup Window. The password needs to be entered into the password box and then repeated in the confirm box. Passwords are case sensitive and must be composed of alphanumeric values.



When a ShockLog is programmed with an iButton password, all iButtons used with that ShockLog unit must be programmed with the same password, otherwise the ShockLog unit will ignore the command. To program an iButton with the appropriate password, the iButton must be connected to the PC via the USB connection BUS and then the Password tab selected.

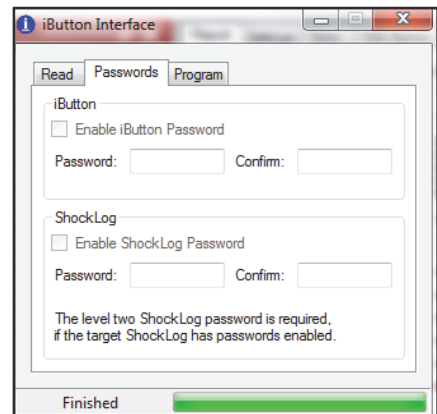
Move to the Password box and enter the password exactly as it is in the corresponding ShockLog's setup file. Move to the confirm box using either the Tab key or moving the mouse to the box. Re-enter the password to confirm.

Once the password has been set, it is necessary to reprogram the iButtons by following the instructions in the following section titled "Program".

### ShockLog Passwords

ShockLog Passwords are factory-defined and cannot be changed by the user. The ShockLog passwords work in a similar way to the iButton passwords, preventing communication with the ShockLog from iButtons that do not have the appropriate passwords. However, the ShockLog passwords are unique to each ShockLog and are supplied with the units when purchased. These passwords provide a unique number for every ShockLog preventing generic passwords from being set up and used on all units.

Every unit shipped from the factory has 3 passwords supplied with it: Level 1, Level 2 and Level 3. The ShockLog password used here requires the Level 2 password.



In order to activate the passwords in the ShockLog unit, the user must follow the instructions in the "Setup Passwords" section of the ShockLog Essentials Manual. Once these passwords have been activated, the only iButtons that will communicate with the ShockLog unit are those programmed with the same ShockLog Level 2 password.

To program an iButton with the appropriate password, place it into the USB connector BUS attached to the PC and open the iButton interface. Select the Passwords tab and enter the ShockLog password into the Password box under the ShockLog section. Re-enter the password in the confirm box.

### Program

With an iButton attached to the iButton USB connector, when entering the "Program" tab, the user will be presented with two check boxes for the different passwords available and five buttons that are either grayed out or live, depending upon the iButton that is attached.

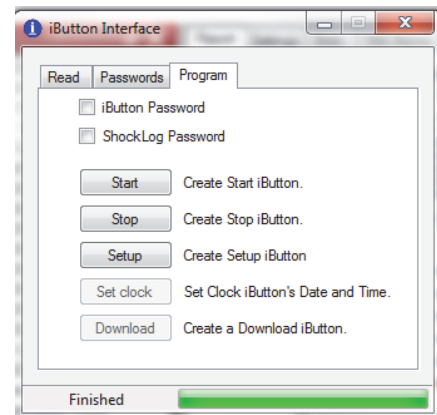
The buttons allow for the creation of: Start, Stop, Setup, Clock and Download iButtons. A number of the iButtons utilized by the ShockLog can be programmed for a number of different options providing the user with more flexibility in their stock of iButtons.

(If an iButton is to be set with a password, it is necessary to click on either the iButton or ShockLog password box at the top of the



tab. This action will take the user back to the Password tab, where the passwords must be entered or created.)

Click on the appropriate program button to send the program into the iButton. "Finished" will appear when the programming is complete. If the user is sending a setup to the iButton, when the setup button is selected, the user will be presented with the file search window and will be asked to select the desired setup file. Please note that if passwords are required, they must have been setup within the setup file before sending to the iButton.



## iButton Usage

### CLOCK

Use the CLOCK iButton to set the ShockLog unit's time and date to the PC's time and date (which was used to program the CLOCK iButton):

1. Insert CLOCK iButton into the appropriate iButton opening on the top of the ShockLog (located under a plastic black cap)
2. Hold the iButton in place, when the 'iButton' LED illuminates, wait and watch the LEDs
3. When the 'iButton' LED is red and the 'Slot Alarm' LED is green, remove the iButton
4. Date and time are set

### SETUP

To transfer a setup file that has been programmed to the SETUP iButton to a ShockLog unit:

1. Insert SETUP iButton into the iButton opening on the ShockLog unit
2. Hold the iButton in place, when the 'iButton' LED illuminates, wait and watch the LEDs
3. When the 'Slot Alarm' green LED illuminates, remove the iButton
4. Setup is complete when the 'Slot Alarm' green LED goes out (up to 2 minutes depending on ShockLog model)



### START

To start a ShockLog unit:

1. Insert the START iButton into the iButton opening on the ShockLog unit
2. Hold the iButton in place, when the 'iButton' LED illuminates, wait and watch the LEDs
3. When the 'iButton' LED is red and the 'Slot Alarm' LED is green, remove the iButton
4. Unit will start after 1 (one) minute

### DOWNLOAD

To download data recorded by a ShockLog:

1. Insert the DOWNLOAD iButton into the iButton opening on the ShockLog unit
2. Hold the iButton in place, when the 'iButton' LED illuminates, wait and watch the LEDs

## ShockWatch® ShockLog® iButton Guide

3. When the 'Slot Alarm' green LED illuminates, remove the iButton (this can take a few minutes depending on the model and data content)
4. Download is complete
5. To download data from a DOWNLOAD iButton to the PC, the user must click on the "Download" button found on the "Read" tab of the USB interface (in the ShockLog software) while the iButton is firmly in the connector bus.

### STOP

To stop a ShockLog unit:

1. Insert STOP iButton into the iButton opening on the ShockLog unit
2. Hold the iButton in place, when the 'iButton' LED illuminates, wait and watch the LEDs
3. When the 'iButton' LED is red and the 'Slot Alarm' LED is green, remove the iButton and the unit will stop recording

