

Split Core Standard CT

Current Transformers



DESCRIPTION

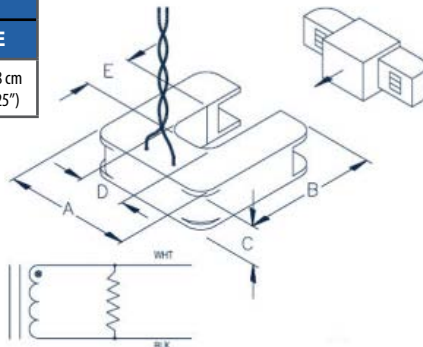
Split Core Standard CTs provide linear output voltage that is directly proportional to the input current. These current transformers are safely and easily installed over existing electrical power lines without disconnecting the lines or interrupting service.

Setra's energy monitoring components are used for a variety of applications including building automation, tenant sub-metering, performance verification, energy management, and new technology assessment.

SPECIFICATIONS				
	100A	200A	400A	600A
Window Size	1.25" (3.20 cm)			
Current Range	5-130A AC	4-260A AC	8-520A AC	12-780A AC
Output	333 mV @ rated current			
Ratio Error*	<1% at rated current (typical)			
Phase Error	<2° at rated current (typical)			
Electrical				
Wire Polarity	White = Hi, positive (+) Black = Low, negative (-)			
Frequency Range	50 to 400 Hz			
Mechanical				
Case Material	Epoxy Encapsulated Housing			
Leads	2.7 M (8'), twisted pair, 20 AWG			
Operating Temp.	Maximum 105°C (220°F)			
Safety				
Working Voltage	600 VAC, Category III			
Dielectric Strength	5000 VAC around case, 600V rated leads			
Certifications	UL STD 61010-1, EN 60044-1:1999 Certified to: CAN/CSA STD 22.2 NO. 61010-1			

*IEEE C57.13 Certification available upon request

Dimensions				
A	B	C	D	E
8.26 cm (3.25")	8.51 cm (3.35")	2.54 cm (1.00")	3.18 cm (1.25")	3.18 cm (1.25")



ORDERING INFORMATION

CT - SCM - [] []

Name		Amps	
SCM	Split Core Medium	100	100 Amps
		200	200 Amps
		400	400 Amps
		600	600 Amps