



## SP-380 PTSA & Fluorescein Dual Meter

### Quick-Start Guide

#### PTSA Calibration:

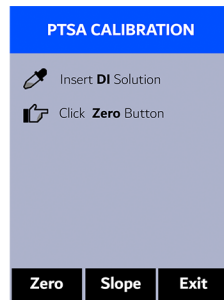
To start this process, press the 'Left Arrow' button to select 'P-Cal'. You will need Pyxis Lab® PTSA Standard Calibration Solution (100ppb).



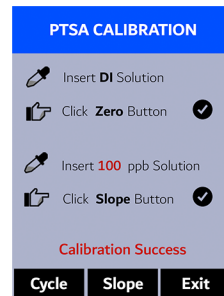
Rinse (3x) and Insert 100 ppb Solution, then select 'Slope'



Rinse (3x) and Insert DI Water, then select 'Zero'



Your unit is now calibrated for PTSA.



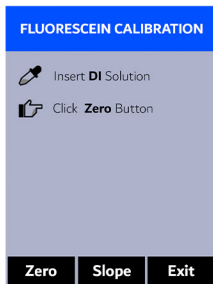
## Fluorescein Calibration:

For this procedure you will need 50, 250 & 500ppb Fluorescein Calibration Solutions by Pyxis Lab®.

To start, press the 'Right Arrow' button to select 'F-Cal'.



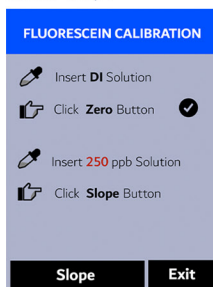
Rinse (3x) and Insert  
DI Water, then select  
'Zero'



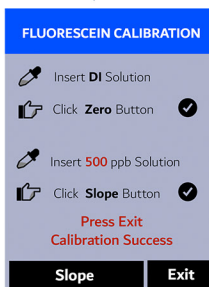
Rinse (3x) and Insert  
50 ppb Solution, then  
select 'Slope'



Rinse (3x) and Insert,  
250 ppb Solution, then  
select 'Slope'



Rinse (3x) and Insert,  
500 ppb Solution, then  
select 'Slope' & 'Exit'



# Shop Calibration Standards

