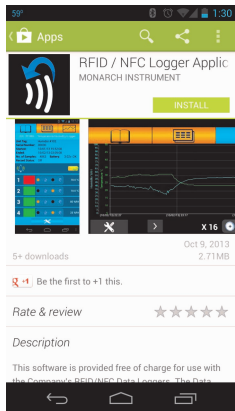
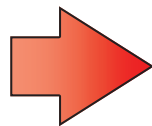


1 Install Android Application on Compatible Device*

Download and install the *Track-It™* RFID application from Google Play. Scan the QR code below with your Android device. Or navigate to the address below. This will bring you directly to the App on Google Play.



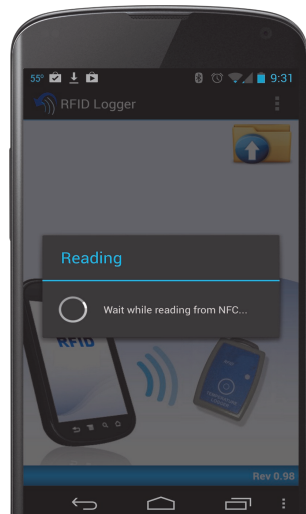
<https://play.google.com/store/apps/details?id=com.it.isb.nfc.app>

*The *Track-It™* RFID application will only work on compatible Android devices with Near Field Communication (NFC). A current list of compatible devices can be found at:

http://en.wikipedia.org/wiki/List_of_NFC-enabled_mobile_devices

2 Open RFID Application on your Android device

Once the RFID logger application has been downloaded and installed to your device find the RFID Logger icon and start the program. Ensure NFC (Near Field Communication) on this device is turned "On". Place and hold the RFID logger directly against your device and in the location of your device's NFC antenna (typically on the back of the device. Refer to your manual for exact location). Hold in place until the application indicates it has finished reading. It takes approximately 2-3 seconds to retrieve and open the summary page.



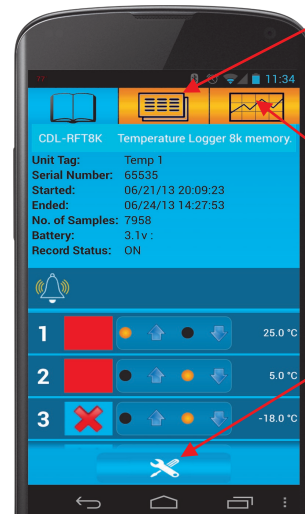
Always ensure logger antenna is in the NFC area of Phone/Tablet



Google Nexus 7 2nd generation shown.

3 View Summary Information

The Summary page shows details including unit tag name, serial number, battery voltage and current record status. It also shows the number of samples and start and end time of the record. Alarms that have occurred during the record session will also be indicated on this page.



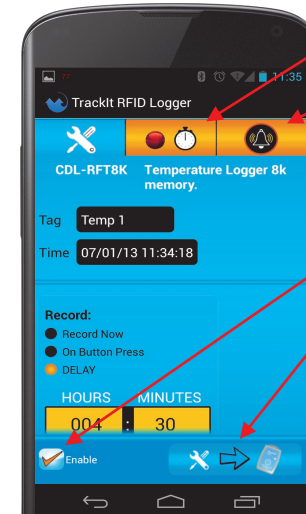
Touching the data tab will initiate a full data download. Place Logger in NFC antenna location and hold in place. Full data transfer can take up to 8 seconds.

Touching graph tab will open the graphic trend page. If data has already been transferred this happens instantly otherwise use same method to transfer data.

Touch the "Tools" icon to enter the configuration mode. You can then set the parameters for recording data.

4 Configure your data logger

The configuration menu allows you to assign a Tag Name and set the logger to record now, on button press or after a time delay. You can also set the record rate and up to 4 alarm set points.



Record rate tab

Alarm setup tab

Once you have finalized all of your settings you can send the configuration to the data logger.

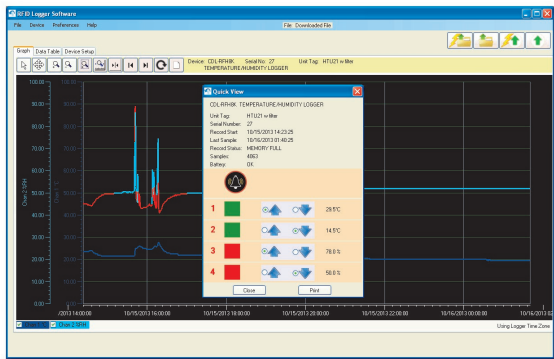
1. Make sure the Enable box is checked.
2. Touch the send to logger icon.
3. Place the logger against your device and wait for confirmation that your configuration has successfully transferred. You are now ready to deploy your data logger!

5 Using Windows PC software

In addition to the Android application, users can also use the free Windows based software package and optional docking station. Software, drivers and complete user manuals can be downloaded here:

[http://www.monarchserver.com/Files/Software/Track-It RFID PC Install \(1\).zip](http://www.monarchserver.com/Files/Software/Track-It RFID PC Install (1).zip)

Once the file has been downloaded, unzip the files to a local folder on your PC and run the CDStart.exe program. This will launch a menu where you can install the PC software and USB docking station drivers. Complete User Manuals are also available from this menu.



PUSH BUTTON AND LED INDICATOR

The pushbutton on the device can be used to start and stop the record mode and/or indicate the status of the logger. A quick button press and release (less than 2 seconds) will cause the LED to flash in a pattern to indicate the status of the logger. The status of the logger can be checked at any time before, during or after a record session. The status LED flash patterns are summarized below:


Short button press (< 2 sec.) shows status

LED Flash Pattern	Status
	Waiting to Record (delayed or on button press)
	Un-programmed, Needs Configuration
	Recording complete, No Alarm Occurred
	Recording complete, Alarm Occurred
	Recording, No Alarm Occurred
	Recording, Alarm Occurred

The push button on the logger can also be used to start and stop the logger 1 time per logging session (this feature must be configured using the Android or PC software). Pressing and holding the button on the logger for longer than 2 seconds will activate the feature if it has been configured to do so.

If you have programmed the logger to record on button press it will not begin recording until activated by the push button. That record session can then be stopped by pressing and holding the button again. There can only be one start and one stop per record session. The logger must be reconfigured using the Android App or PC program before it can be used again.



 **MONARCH INSTRUMENT**
15 Columbia Drive
Amherst, NH 03031

Ph: 603-883-3390
www.monarchinstrument.com

 **Track-It™ Data Loggers**



QUICK START GUIDE