

TruBlue™ 255 Level



- Level Accuracy of $\pm 0.05\%$ FS TEB
- <1cm Accuracy Error up to 10m H₂O
- Ten Year Permanent Battery
- Standard 8 MB Internal Memory for up to 550,000 Data Points
- Optional 56 MB Internal Memory for up to 3.7 Million Data Points
- User-friendly TruWare™ Software for PC or Mobile Included Free of Charge



DESCRIPTION

With our highly accurate, compact design, the Measurement Specialties TruBlue 255™ has set the standard for water level measurement. Now our next generation of water level data loggers – the TruBlue™ 255 Level – combines precision, performance, and rugged reliability like no other water level measurement instrument available today. Designed to deliver time and time again in even the harshest conditions, the TruBlue™ 255 Level is battery powered and features welded 316 stainless steel or titanium construction in a fully sealed design. Advanced, power-conserving microcomputer technology enables it to log level (depth) and temperature for up to ten years. Since these units do not require onsite power or a programmable logic controller (PLC), a terminal box isn't necessary.

The TruBlue™ 255 Level is the perfect choice for water level monitoring when reliability, accuracy and precision are needed in a compact, competitively priced design.

FEATURES

- Calibration Report with each instrument
- New compact fully sealed design
- Two Year Warranty
- Easy set-up and data retrieval
- High speed data extraction
- Optional 56 MB internal memory
- Optional battery pack for rapid sampling

APPLICATIONS

- Aquifer Characterization, Slug and Pump Tests
- Gage Height, River, Stream and Stage Gauging
- Tide and Harbor Gauging
- Flood and Storm Surge Measurement
- Wetlands and Stormwater Run-off Management
- Watershed and Recharge Monitoring
- Wave Studies and Rapid Sampling

TruBlue™ 255 Level

SPECIFICATIONS

SENSORS – LEVEL

Sensor Type		Oil-filled Piezoresistive
Sensor Material		316 SS or Titanium
Range (psia)	Low	22
	High	300
Accuracy	0 – 50°C	±0.05% FS TEB
Resolution		0.01% FS or better
Burst		3X FS (600 psi max)

Accuracy is stated as total error band (TEB). This includes the combined errors due to non-linearity, hysteresis, non-repeatability and thermal effects. This accuracy can be maintained by performing semi-annual field calibrations.

SENSORS – TEMPERATURE

Sensor Type		Embedded RTD
Range (°C)	Low	0
	High	50
Accuracy		±0.1 °C
Resolution		0.01 °C

PHYSICAL

Diameter	inches	0.75
Length	inches	7.89
Weight	oz.	6

OPERATING CONDITIONS

Pressure (psia)	Low	7
	High	3X FS (600 psia max)
* Temperature (°C)	Low	-20
	High	80

* Accuracy affected exceeding 0-50 °C

ELECTRICAL

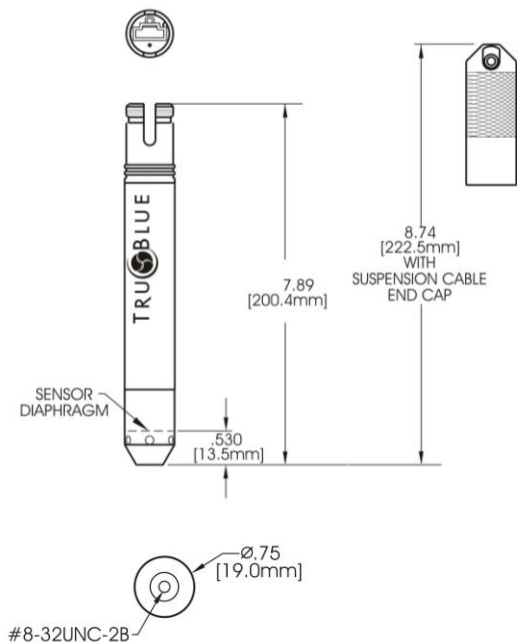
Internal Battery Type		3.6V lithium
Battery Life	One reading/ 5 minutes	10 years
External Power		6-16 VDC (2 mA sleep, 15 mA active)
Communication Interface		RS-485 (half duplex)

DATA LOGGING

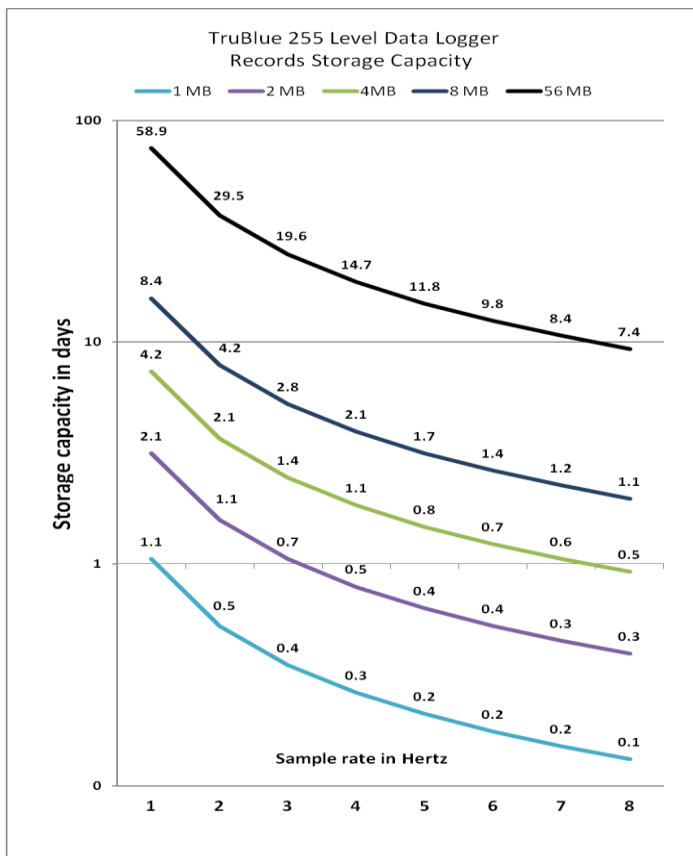
Memory	Standard	8 MB
	Optional	56 MB
Data Points	Standard	550,000
	Optional	3,733,000
Clock Accuracy		2 min/year
		up to 8 Hz
Logging Rate	Linear	programmable
	Linear Avg	programmable
	Event	programmable
Methods	Linear	✓
	Linear Avg	✓
	Event	✓
Data Extraction Rate		1500 measurements/sec.
Pressure Response Time		< 1 second
Thermal Response Time	To achieve temperature compensation of the pressure sensor	< 10 minutes

TruBlue™ 255 Level

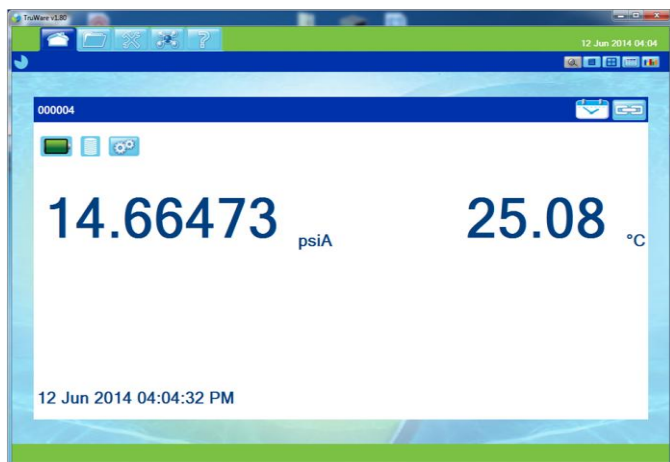
DIMENSIONS



SAMPLING RATES AND STORAGE



SOFTWARE



Each unit comes with user-friendly TruWare™ software at no charge.

- View, graph, and export test data
- Easy to use in the field or office
- Easy conversion to accurate water level reading, fully compensated for barometric pressure, temperature and water density

TruBlue™ 255 Level

SYSTEM REQUIREMENTS

1. Pick a transducer model

MODEL 8MB MEMORY	MODEL 56 MB MEMORY	MATERIAL	RANGE (PSI)	LABEL
255-00320	255-70320	Stainless Steel	22	0-5.1m, 0-16.8 ft
255-00330	255-70330	Titanium	22	0-5.1m, 0-16.8 ft
255-00420	255-70420	Stainless Steel	30	0-10.8m, 0-35.3 ft
255-00430	255-70430	Titanium	30	0-10.8m, 0-35.3 ft
255-00520	255-70520	Stainless Steel	50	0-24.8m, 0-81.5 ft
255-00530	255-70530	Titanium	50	0-24.8m, 0-81.5 ft
255-00620	255-70620	Stainless Steel	100	0-60m, 0-196.8 ft.
255-00630	255-70630	Titanium	100	0-60m, 0-196.8 ft.
255-00720	255-70720	Stainless Steel	125	0-77.6m, 0-254.5 ft
255-00730	255-70730	Titanium	125	0-77.6m, 0-254.5 ft
255-00820	255-70820	Stainless Steel	300	0-200.6m, 0-658.3 ft
255-00830	255-70830	Titanium	300	0-200.6m, 0-658.3 ft

2. Decide on a communication cable

MODEL	DESCRIPTION
850 00851	Absolute Communication Cable
850 00857	USB to Backshell Communication Cable

3. Other cabling options can be found in the TruBlue™ Accessories Catalog

NORTH AMERICA

Measurement Specialties, Inc.
1000 Lucas Way
Hampton, VA 23666
USA
Tel: 1-757-766-1500
Fax: 1-757-766-4297
Toll Free: 1-800-745-8008
Sales: WL.sales@meas-spec.com

EUROPE

Measurement Specialties
(Europe), Ltd.
26 Rue des Dames
78340 Les Clayes-sous-Bois, France
Tel: +33 (0) 130 79 33 00
Fax: +33 (0) 134 81 03 59
Sales: pfg.cs.emea@meas-spec.com

ASIA

Measurement Specialties
(China), Ltd.
No. 26 Langshan Road
Shenzhen High-Tech Park (North)
Nanshan District, Shenzhen 518057
China
Tel: +86 755 3330 5088
Fax: +86 755 3330 5099
Sales: pfg.cs.asia@meas-spec.com

The information in this sheet has been carefully reviewed and is believed to be accurate; however, no responsibility is assumed for inaccuracies. Furthermore, this information does not convey to the purchaser of such devices any license under the patent rights to the manufacturer. Measurement Specialties, Inc. reserves the right to make changes without further notice to any product herein. Measurement Specialties, Inc. makes no warranty, representation or guarantee regarding the suitability of its product for any particular purpose, nor does Measurement Specialties, Inc. assume any liability arising out of the application or use of any product or circuit and specifically disclaims any and all liability, including without limitation consequential or incidental damages. Typical parameters can and do vary in different applications. All operating parameters must be validated for each customer application by customer's technical experts. Measurement Specialties, Inc. does not convey any license under its patent rights nor the rights of others.