



High-Performance Video Inspection Systems



Precision, Specialty and Innovation



DCS1800

High-Performance, Wireless, Recording Video Borescope System

Features ultra-slim 5.5mm diameter probe, 3.5 in. color monitor and powerful recording capability of sound, image and video. Optional super-slim, multi-view and articulating probes available.

Applications:

- Government, Military, Security
- Infrastructure Inspection and Maintenance
- Aircraft Maintenance and Inspection
- Automotive Maintenance
- MRO / Industrial Inspection
- Inspection of Complex Machinery
- Oil, Power and Petro Industry Inspection Applications
- Inspection of Tooling Dies

Features:

- 3.5 in. (88.9mm) extra-wide, color TFT monitor with super sharp clarity
- Records audio, video and still images with instant playback review
- Wireless image and video transfer
- Comes with a 1m (3.28 ft.) long, 5.5mm (.22 in.) diameter, flexible-obedient probe that retains required shape. Depth of field is 10 to 60mm (0.4 to 2.4 in.)
- Optional probes include: 3.9mm diameter x 1m long ultra-slim probe, 4.9mm x 1m long switchable front/side view probe and 6.0mm x 1m long articulating probe
- All probes feature adjustable super-strength white LED lights inside the tip for optimized illumination
- All probes are water, oil, dust and scratch resistant to IP67 standards
- 3 Interchangeable mirrored viewing tips provide extra wide view angle at 70°, 90°, 110°
- Optional Click 'N Measure software accessory for sophisticated target analysis
- Multiple language menu
- AV out allows for TV monitor and computer interfaces
- Rechargeable internal batteries

Benefits:

- Wireless imaging allows inspection results to be sent to a larger screen up to 150 ft. away for team based analysis
- Wireless camera probe enables access to the smallest and most inaccessible places
- Ultra slim probes with powerful video camera and LED lights in the tip enable user to inspect the tiniest spaces
- Optional 3.9mm (0.15 in.) diameter camera-tipped probe is the slimmest on the market and enables easy access through the spark plug hole of any engine including diesel
- View findings in real-time or record video and still images for output later
- Rechargeable batteries can record for 4 hours and will help you stay "Green"
- Interchangeable accessories provide additional function
- More value for your investment



No. DCS1800



Includes:

Custom Hard Case, 5.5mm Diameter x 1m Long Flexible-Obedient Probe, 2GB SD Card, RCA Cable, 3 Interchangeable Mirrored Viewing Tips (70°, 90°, 110°), LCD Cleaning Cloth, AC Adapter/Charger, Rechargeable Battery, Instruction Manual, 1 Year Warranty

DCS1800, DCS1800ART, DCS1600, DCS1600ART Specifications:

DCS1800 and DCS1600 comes with: 5.5mm (0.22 in.) Diameter x 1m (3.28 ft.) long camera probe

DCS1800ART and DCS1600ART comes with: 6mm (0.24 in.) Diameter x 1m (3.28 ft.) long articulating camera probe

Depth of Field (DOF): 10 to 60mm (0.4 to 2.4 in.)

Probe Feature: Water, Oil & Dust resistant to IP67 standards

Field of View: Horizontal field angle 46°
Vertical field angle 34° Diagonal field angle 56°

Optional 5.5mm Probe Lengths: 1m, 2m, 3m, 5m, 10m, 30m

Additional Optional Probes:

- 3.9mm diameter x .75m long ultra-slim probe
- 4.9mm diameter x 1m long switchable front/side view probe
- 6.0mm diameter x 1m long articulating probe

Display: 3.5 in. (88.9mm) Color TFT

Display Monitor: 320 x 240 Pixels

Audio: (DCS1800 Only) Integrated microphone

Wireless Transceiver Frequency:

(DCS1800 Only)
2.4GHz
4 Ch's (2414MHz, 2432MHz, 2450MHz, 2468MHz)

System Power:

Battery: Rechargeable Li-Polymer Battery 3.7V
Power Supply: AC 100-240V 50-60Hz
Power Consumption: DC5.5 1.8A

Recording Medium: 2GB SD Card



DCS1600

High-Performance, Recording Video Borescope System

Features ultra-slim 5.5mm diameter probe, 3.5 in. color monitor and powerful recording capability. Optional super-slim, multi-view and articulating probes available.

Applications:

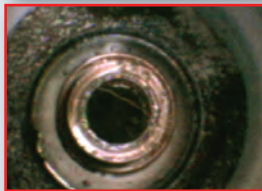
- Aircraft Maintenance and Inspection
- Military, Security, Law Enforcement
- Automotive / Diesel Maintenance
- Other High Level Inspection

Features:

- 3.5 in. (88.9mm) extra-wide, color TFT monitor with super sharp clarity
- Records video and still images with instant playback review
- Comes with a 1 m (3.28 ft.) long, 5.5mm (.22 in.) diameter, flexible-obedient probe that retains required shape. Depth of field is 10 to 60mm (0.4 to 2.4 in.)
- Optional probes include: 3.9mm diameter x 1 m long ultra-slim probe, 4.9mm x 1 m long switchable front/side view probe and 6.0mm x 1 m long articulating probe
- All probes feature adjustable super-strength white LED lights inside the tip for optimized illumination
- All probes are water, oil, dust and scratch resistant to IP67 standards
- 3 Interchangeable mirrored viewing tips provide extra wide view angle at 70°, 90°, 110°
- Optional Click 'N Measure software accessory for sophisticated target analysis
- Multiple language menu
- TV monitor and USB computer interfaces
- Rechargeable internal batteries

Benefits:

- Ultra-slim probes with powerful video camera and LED lights in the tip enable user to inspect the tiniest spaces
- Optional 3.9mm (.15 in.) diameter camera tipped probe is the slimmest on the market and enables easy access through the spark plug hole of any engine including diesel
- View findings in real-time or record video and still images for output later
- Rechargeable batteries can record for 4 hours and will help you stay "Green"
- Interchangeable accessories provide additional function
- More value for your investment



No. DCS1600



Includes:

Custom Hard Case, 5.5mm Diameter x 1 m Long Flexible-Obedient Probe, 2GB SD Card, RCA Cable, USB Cable, 3 Interchangeable Mirrored Viewing Tips (70°, 90°, 110°), LCD Cleaning Cloth, AC Adapter/Charger, Rechargeable Battery, Instruction Manual, 1 Year Warranty

DCS1800, DCS1800ART, DCS1600, DCS1600ART Specifications: (cont.):

Video Out Format: NTSC and PAL

Interface: AV Out on 1800 and 1600 systems. USB also on 1600.

Compression Format: Compliant with MPEG4

Image Resolution: 640 x 480 Pixels

Video Resolution: 320 x 240 Pixels

Frame Rate: ~30 fps

Exposure: Automatic

White Balance: Fixed

S/N Ratio: 42dB or more

Languages: English, German, French, Spanish

Operating Environment: -4° to 140°F (-20° to 60°C)

Storage Environment: -4° to 140°F (-20° to 60°C)

Recharge Environment: 32° to 104°F (0° to 40°C)

Interchangeable Options:

- **Click 'N Measure Software**
No. DCS1618M

- **Set of 3 Mirrored Viewing Tips**
No. PM003 (70°, 90°, 110°)



DCS1800ART / DCS1600ART

High-Performance Video Borescope Systems with Articulating Probes

CE FC RoHS



No. DCS1800ART
(The DCS1800 System with the P18ART-1SM Probe)



No. DCS1600ART
(The 1600 System with the P16ART-1SM probe)

Applications:

- Ideal for aircraft maintenance, machinery and production line inspection, petro-chemical and power plant inspection, general MRO and facility management

Features:

- One-handed articulation function allows user to turn the probe tip to inspect targets located at sides or at an angle while it is inside a tight space
- Turning knob and lock-button are ergonomically-engineered, and offer one-handed easy control to the probe tip to view targets from ideal angle
- Durable material and construction: all components pass 60,000 cycle test

Specifications:

Articulation Angle: 2 way

Articulation Sweep: 0 to $\pm 120^\circ$

Supplied Probe: 6mm (0.23 in.) diameter x 1m (3.28 ft.) long, articulating soft metal probe



For use with all DCS1600 and DCS1800 Series Video Inspection Systems

CE RoHS



SPECIALTY PROBES FOR ALL 1800 / 1600 SYSTEMS

4.9mm Diameter Switchable Front View/Side View Flexible-Obedient Probe



No. P1618FS-49

Features:

- Super-slim probe features 2 separate cameras, each with its own built-in light source
- Switchable dual views allow for straight-on and 90° viewing with full 360° rotational viewing
- Minimum Focal Distance of 1.5 in. (38mm) allows for extremely close-up viewing
- 4.9mm (0.159 in.) diameter x 1m (3.28 ft.) long probe is water, oil, dust and scratch resistant to IP67 standards
- The probe is flexible-obedient, meaning it retains the shape a user needs

3.9mm Diameter Ultra-Slim Flexible-Obedient Probe



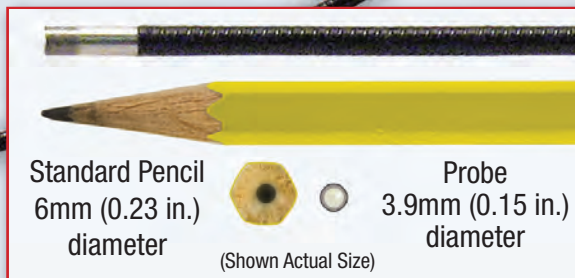
No. P1839-M

Applications:

These two specialty probes are ideal for inspection of tiny spaces in aircraft inspection, engine check up and other high demand industrial inspection applications. These two unique probes are the world's slimmest with a video camera and adjustable LED lights imbedded in the tiny heads. The 4.9mm probe even has two separate cameras, each with its own dedicated light source, built in to the tiny 4.9mm diameter head.

Features:

- Ultra-slim probe is almost as small as a pencil lead and can get into the smallest areas
- Minimum Focal Distance of 1.5 in. (38mm) allows for extremely close-up viewing
- 3.9mm (0.15 in.) diameter, .75m (2.5 ft.) long probe is water, oil, dust and scratch resistant to IP67 standards
- The probe is flexible-obedient, meaning it retains the shape a user needs





BORESCOPE SYSTEMS AND PROBES

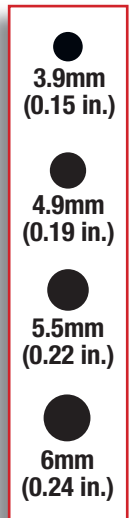
High Performance Systems and Included Probes

Model #	UPC	Screen Size	Video/Still Recording	Wireless	Audio	Included Probe	Description
DCS1800ART	01417 2	3.5 in. (88.9mm)	✓	✓	✓	P18ART-1SM	High Performance Wireless, Articulating, Recording Video Borescope System
DCS1600ART	01416 5	3.5 in. (88.9mm)	✓			P16ART-1SM	High Performance, Articulating, Recording Video Borescope System
DCS1800	01297 0	3.5 in. (88.9mm)	✓	✓	✓	P16181SR-M	High Performance Wireless, Recording Video Borescope System
DCS1600	01305 2	3.5 in. (88.9mm)	✓			P16181SR-M	High Performance Recording Video Borescope System

Probe Options for the High Performance Video Borescope Systems

Model #	UPC	Diameter	Length	Description
Articulating Probe Options for the DCS1800ART (and DCS1800) Systems				
P18ART-1SM	01419 6	6.0mm (0.23 in.)	1m (3.28 ft.)	Soft Metal Articulating Probe
P18ART-2SM	01477 6	6.0mm (0.23 in.)	2m (6.6 ft.)	Soft Metal Articulating Probe
Articulating Probe Options for the DCS1600ART (and DCS1600) Systems				
P16ART-1SM	01418 9	6.0mm (0.23 in.)	1m (3.28 ft.)	Soft Metal Articulating Probe
P16ART-2SM	01476 9	6.0mm (0.23 in.)	2m (6.6 ft.)	Soft Metal Articulating Probe
Flexible-Obedient Probe Options for All 1800 and 1600 Systems				
P16181SR-M	01408 0	5.5mm (0.22 in.)	1m (3.28 ft.)	Flexible-Obedient Probe
P16182SR-M	01409 7	5.5mm (0.22 in.)	2m (6.6 ft.)	Flexible-Obedient Probe
P16183SR-M	01410 3	5.5mm (0.22 in.)	3m (9.8 ft.)	Flexible-Obedient Probe
Soft Metal Probe Options for All 1800 and 1600 Systems				
P16181SM-M	01411 0	5.5mm (0.22 in.)	1m (3.28 ft.)	Soft Metal Probe
P16183SM-M	01412 7	5.5mm (0.22 in.)	3m (9.8 ft.)	Soft Metal Probe
P16185SM-M	01414 4	5.5mm (0.22 in.)	5m (16 ft.)	Soft Metal Probe
P161810SM-M	01414 1	5.5mm (0.22 in.)	10m (32 ft.)	Soft Metal Probe
P161830SM-M	01415 8	5.5mm (0.22 in.)	30m (98 ft.)	Soft Metal Probe
Specialty Probe Options for All 1800 and 1600 Systems				
P1839-M	01424 0	3.9mm (0.15 in.)	.75m (29.5 in.)	Flexible-Obedient Probe
P1618FS-49	01481 3	4.9mm (0.19 in.)	1m (3.28 ft.)	Front View & Side View Switchable Flexible-Obedient Probe
Accessories for the DCS1800 and DCS1600 Systems				
DCS1618M	01395 3	—		Click 'N Measure Software and Measuring Tip
PM003	01370 0	—		Set of 3 Mirrored Viewing Tips (70°, 90°, 110°)

Probe Diameters (actual size)



WARRANTY INFORMATION: All Borescopes and Video Inspection Systems from General Tools & Instruments (General®) are under warranty to the original purchaser to be free from defects in material and workmanship. Subject to certain restrictions, General will repair or replace the instrument if, after examination, it is determined by General to be defective in material or workmanship for a period of one or three years as stated within each product description.

This warranty does not apply to damages that General determines to be from an attempted repair by non-authorized personnel or misuse, alterations, normal wear and tear or accidental damage. The defective unit must be returned to General Tools & Instruments or a General authorized service center, freight prepaid and insured.

Acceptance of the exclusive repair and replacement remedies described herein is a condition of the contract for purchase of this product. In no event shall General be liable for any

incidental, special, consequential or punitive damages, or any cost, attorneys fees, expenses, losses alleged to be as a consequence of any damage due to failure of, or defect in, any product including, but not limited to, any claims for loss of profits.

GENERAL'S RETURN FOR REPAIR POLICY: Every effort has been made to provide you with a reliable, product of superior quality. However, in the event your instrument requires repair, please contact our Customer Service to obtain an RGA# (Return Goods Authorization) before forwarding the unit, via prepaid freight, to the attention of our Service Center at this address:

General Tools & Instruments, 80 White Street, New York, NY 10013

Remember to include a copy of your proof of purchase, your return address, and your phone number and/or e-mail address.



Specialty Tools & Instruments
General Tools & Instruments

80 White Street, New York, NY 10013-3567
 Phone: (212) 431-6100 Toll Free: (800) 697-8665
 e-mail: sales@generaltools.com www.generaltools.com

Specifications subject to change without notice.
 We are not responsible for typographical errors.
 ©2010 GENERAL TOOLS & INSTRUMENTS