

MANIFOLDS

DATASHEET

W

The FUJI FCX-All differential, gauge and absolute pressure transmitters can be direct mounted with different kinds of manifold, adapted for the application and the type of transmitter.

The manifolds can be delivered mounted on the transmitters or supplied separately.

When supplied mounted, the complete assembly is fully pressure tested, and calibrated in the factory.

Technical information

Material :

Standard : Stainless steel 316 for manifold body and valves.

Carbon steel : for quantities of 50 or more (consult Fuji).

Upon request : body material in Monel, Duplex, Hastelloy C 276, etc.

Bolts material : stainless steel 316.

Gasket : PTFE (standard), Grafoil etc...

Bolting size :

M10 for static pressure 160 bar max. and gauge pressure for 100 bar max.

M12 and 7/16 - 20 UNF for 420 bar static and 500 bar gauge pressure.

Mounting :

Manifold can be mounted on the transmitter.

All tests and manufacturing operations will be done with the manifold mounted :

- Pressure test (leakage test) at 1,5 x static pressure for differential pressure transmitter at overpressure rating for gauge and absolute pressure transmitters.
- Calibration with factory facilities.

Process connection :

1/2" NPT female, others upon request.

Operating pressure :

The maximum pressure is 414 bar (6000 PSI).

Upon request, manifolds for maximum pressure 690 bar (10000 PSI) can be delivered.

Code symbols

1	2	3	4	
W				Manifolds
				Type
*2	2			1 Valve - type 1318CDADABAA-FU - SS 316L
	3			2 Valves - type 2166CDAHBBAA-FU - SS 316L
	5			3 Valves - type 3152CDAHBBAA-FU - SS 316L
*4	6			3 Valves - type 3050CDAHBBAA-FU - SS 316L
	7			5 Valves - type 5050CDAHBBAA-FU - SS 316L
	8			3 Valves - type Flange/Flange 3454CHHHBBAA-FU - SS 316L
*5	9			2 Valves - type 2052CDADABAA-FU - SS 316L
				Bolting size & material
	0			7/16 - 20 UNF - Carbon steel
	1			7/16 - 20 UNF - SS 316
	2			M10 - SS 316
*1	3			M12 - SS 316
	4			None
				Mounted on transmitter
*3	2			Yes
	1			No - Separate kit

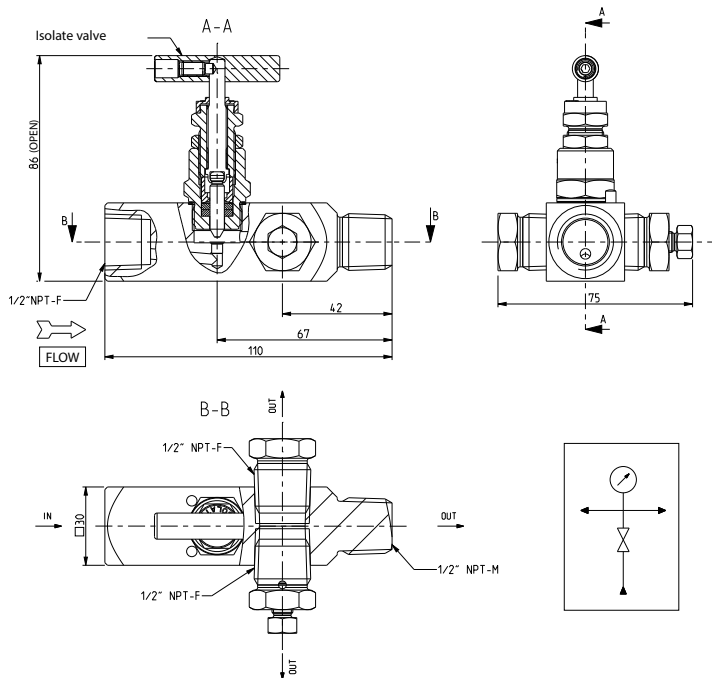
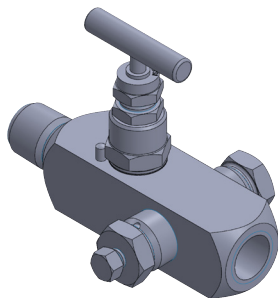
Notes :

- 1 : For 420 bar static pressure (differential pressure), and 500 bar (gauge pressure), M10 bolting is not suitable, please select 7/16 or M12.
- 2 : No bolting is necessary for this manifold type.
- 3 : When manifold is ordered mounted on the transmitter, hydrostatic pressure test and calibration are made with manifold, so complete set is tested.
- 4 : Manifold type 3050 is low cost version of type 3152.
- 5 : Supplied with fitting if connection 1/2" NPT Female

OUTLINE DIMENSIONS (unit : mm)

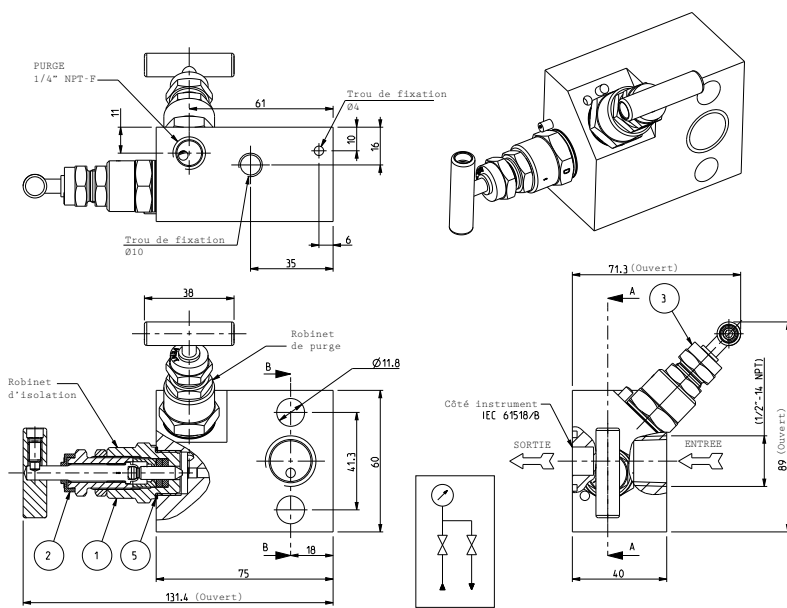
**1 valve manifold
Type 1318CDADABAA - FU**

Pressure	414 bar (6000 Psi)
Material	SS 316L
Sealing	PTFE
Conne- ction	1 INLET - 1/2" NPT female 1 OUTLET - 1/2" NPTmale
Various	Bleeder - 1/2" NPT
	Cap - 1/2" NPT



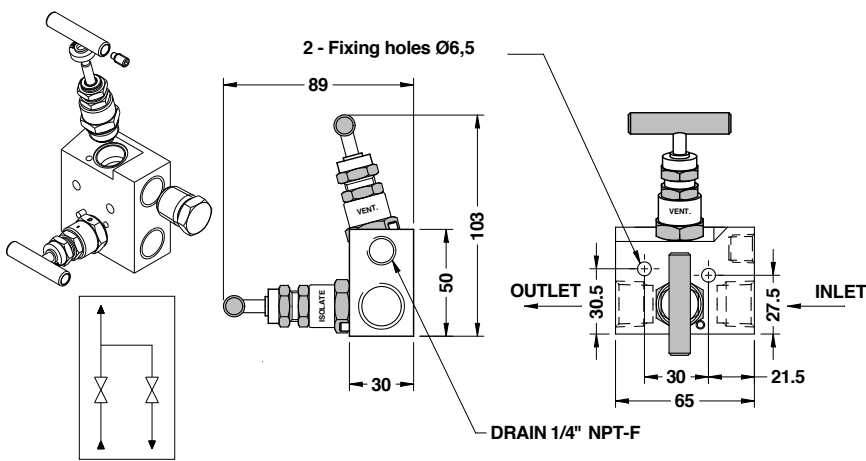
**2 valves manifold
Type 2166CDAHHBAA - FU**

Pressure	414 bar (6000 Psi)
Material	SS 316L
Sealing	PTFE
Conne- ction	1 INLET - 1/2" NPT female
Various	Drain - 1/4" NPT
	Fixing holes - M10



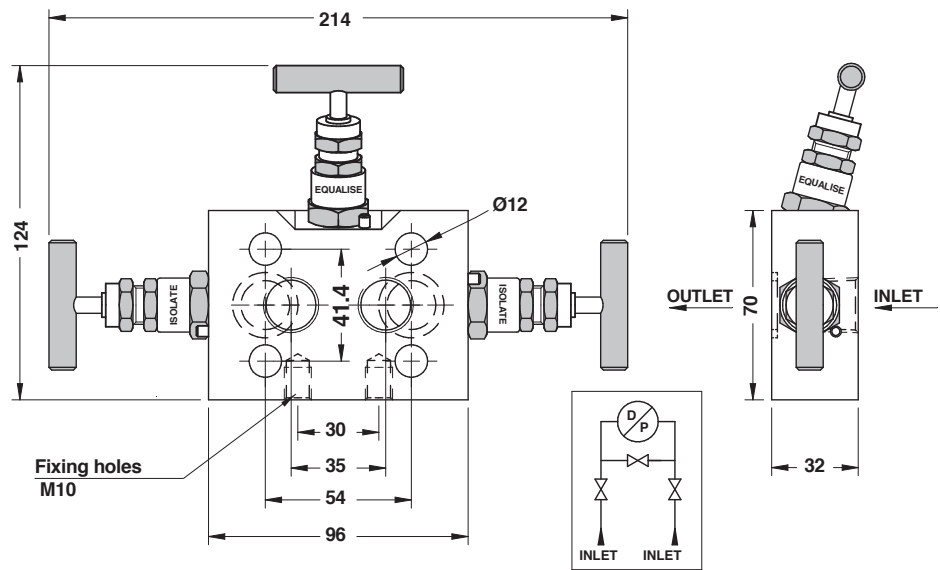
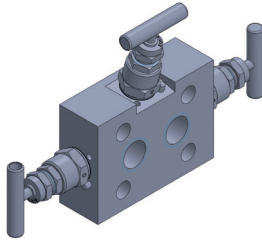
**2 valves manifold
Type 2052CDADABAA - FU**

Pressure	414 bar (6000 Psi)
Material	SS 316L
Sealing	PTFE
Conne- ction	1 INLET - 1/2" NPT female
Various	Drain / Cap - 1/4" NPT
	Fixing holes - Ø6,5



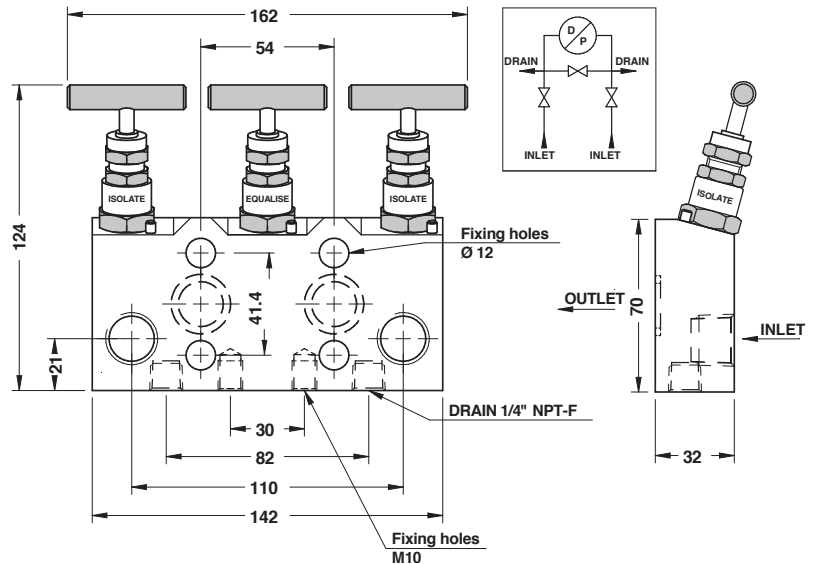
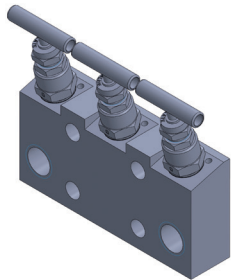
3 valves manifold Type 3050CDAHBBAA - FU

Pressure	414 bar (6000 Psi)
Material	SS 316L
Sealing	PTFE
Connection	INLET - 1/2" NPT female
Process connection	Various mounting
Divers	Fixing holes - M10 / Ø12



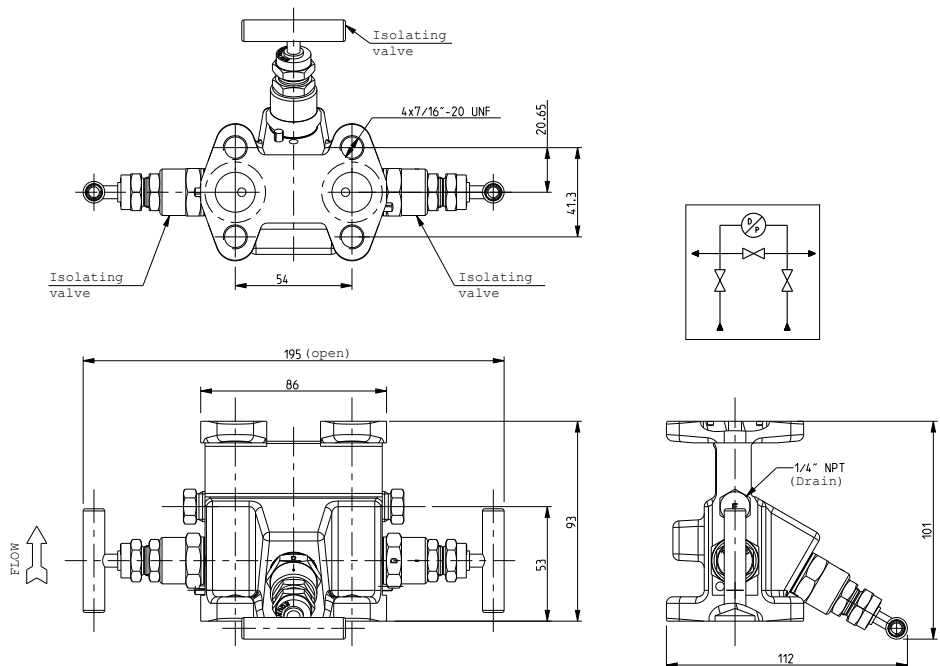
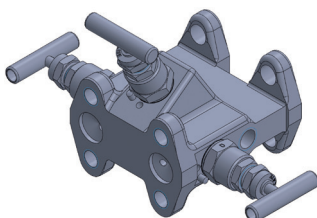
3 valves manifold Type 3152CDAHBBAA - FU

Pressure	414 bar (6000 Psi)
Material	SS 316L
Sealing	PTFE
Connection	INLET - 1/2" NPT femelle
Process connection	Direct mounting
Various	DRAIN - 1/4" NPT



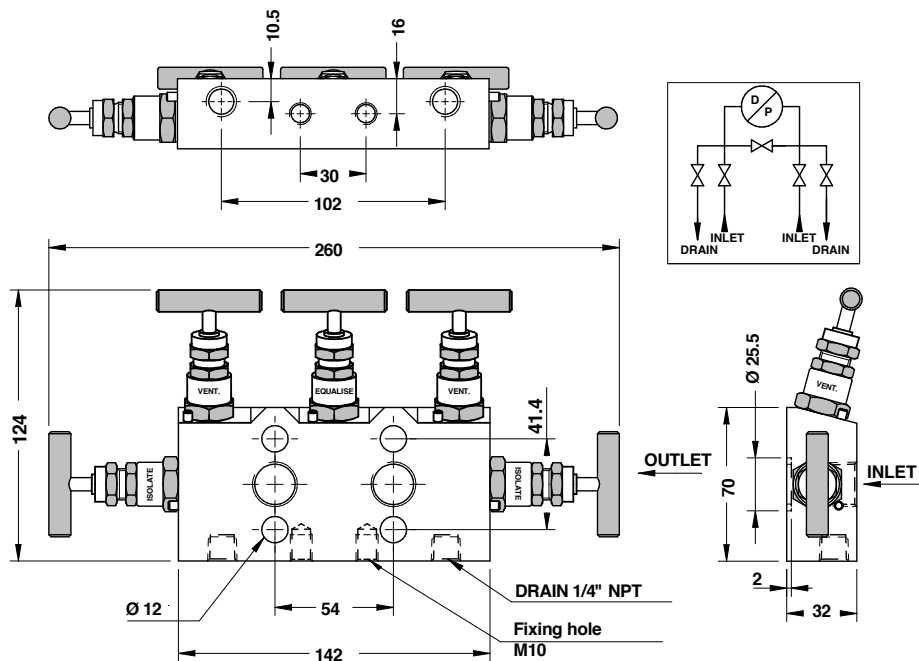
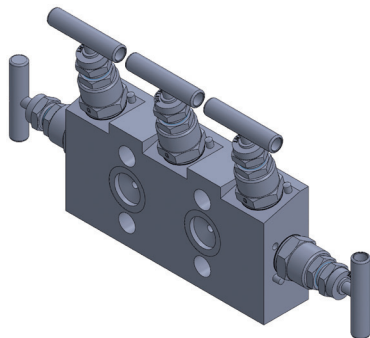
3 valves manifold Type 3454CHHHBBAA - FU

Pressure	414 bar (6000 Psi)
Material	SS 316L
Sealing	PTFE
Connection	INLET - 1/2" NPT female
Process connection	FLANGE/FLANGE direct mounting
Various	DRAIN / CAPS 1/4" NPT



5 valves manifold Type 5050CDAHBBAA - FU

Pressure	414 bar (6000 Psi)
Material	SS 316L
Sealing	PTFE
Connection	INLET - 1/2" NPT female
Process connection	Direct mounting
Various	Drain - 1/4" NPT
	Fixation holes - M10 / Ø12



Fuji Electric

Fuji Electric France S.A.S.

46 rue Georges Besse - ZI du brézet - 63039 Clermont ferrand

Tél : 04 73 98 26 98 - Fax : 04 73 98 26 99

Mail : sales.dpt@fujielectric.fr - web : www.fujielectric.fr

Fuji Electric can accept no responsibility for possible errors in catalogues, brochures and other printed material. Fuji Electric reserves the right to alter its products without notice. This also applies to products already on order provided that such alterations can be made without subsequential changes being necessary in specifications already agreed. All trademarks in this material are property of the respective companies. All rights reserved.