

PAC Machine Edition

Version 9.70

ver.9.7



PAC Machine Edition

Install Machine Edition

Install Change Management

Important Product Information

Browse the DVD

Exit

This program is protected by U.S. and international copyright laws as indicated in "About" and/or other content or materials provided with the program.



Contents

- PAC Machine Edition..... 1**
 - Technical Support..... 5
 - PAC Product Information 6
 - Release Notes 6
 - Fixed Issues..... 6
 - New Features..... 7
 - General..... 7
 - Project Version 7
 - Project Properties 7
 - Toolchest Sorting 7
 - User Options Import and Export 7
 - Hot Key IDE Navigation..... 7
 - User Interface Improvements 7
 - Logic Developer PLC 8
 - GSDML Updates 8
 - RSTi EP Standalone Controller..... 8
 - Default HWC Compression Level set to High..... 8
 - PROFINET GSDML Schema Support 8
 - Embedded SNTP Client..... 8
 - RX3i Redundancy CPU support for Hot Standby Redundancy (CPE400)..... 8
 - Support for Single-RMX Redundancy 9
 - Support for new hardware 9
 - Text Block Support Within FBD Multi-Select..... 9
 - Variable Element Filter Configurations..... 9
 - Support for \$# Tags in FBD and ST 9
 - Toolchest Drag-N-Drop of Profinet Devices to Embedded Profinet Ports 9
 - Added System Variable for %SA5 on PAC Systems..... 10
 - System Option – Catalog Update..... 10
 - Support for String literals in the ST Editor..... 10
 - Increased Communication Timeouts 10
 - Increased Block Count 10
 - Support for Control Modules 10

Structured Text Editor	10
VersaSafe Logic Blocks and Template Update	10
DNP3 Outstation Protocol	10
OPC UA Security Configuration.....	11
Utilities	11
PACSystems Analyzer	11
View/ LDPC	11
Proficy View Integrated OPC Server Version 5.21	11
Support for User-defined Data Types (UDTs).....	12
View Runtime Splash Screen Download Details.....	12
Change Management	13
Parameters View of Function Blocks	13
Windows Server 2016, 2012 Standard, and R2 Support	13
Unity Pro XL Support	13
Enhancement to the Server Configuration Utility	13
Enhancement of Destroy Confirmation.....	13
Enhancement of Access Control Permissions	14
User Account Control Changes	14
Known Issues	14
Indirect Reference incorrectly reporting as used addresses (00422649/DE3864)14	
PPS Based CIMPLICITY Alarms Can Not be Acknowledged	14

Warnings and Caution Notes as Used in this Publication

WARNING

Warning notices are used in this publication to emphasize that hazardous voltages, currents, temperatures, or other conditions that could cause personal injury exist in this equipment or may be associated with its use.

In situations where inattention could cause either personal injury or damage to equipment, a Warning notice is used.

CAUTION

Caution notices are used where equipment might be damaged if care is not taken.

Note: *Notes merely call attention to information that is especially significant to understanding and operating the equipment.*

These instructions do not purport to cover all details or variations in equipment, nor to provide for every possible contingency to be met during installation, operation, and maintenance. The information is supplied for informational purposes only, and Emerson Automation Solutions makes no warranty as to the accuracy of the information included herein. Changes, modifications, and/or improvements to equipment and specifications are made periodically and these changes may or may not be reflected herein. It is understood that Emerson Automation Solutions may make changes, modifications, or improvements to the equipment referenced herein or to the document itself at any time. This document is intended for trained personnel familiar with the Emerson Automation Solutions products referenced herein.

Emerson Automation Solutions may have patents or pending patent applications covering subject matter in this document. The furnishing of this document does not provide any license whatsoever to any of these patents.

Emerson Automation Solutions provides the following document and the information included therein as-is and without warranty of any kind, expressed or implied, including but not limited to any implied statutory warranty of merchantability or fitness for particular purpose.

*** Indicates a trademark of Intelligent Platforms LLC and/or its subsidiaries.
All other trademarks are the property of their respective owners.**

**©Copyright 2019 Intelligent Platforms LLC an Emerson Automation Solutions Company.
All Rights Reserved**

Technical Support

If you experience technical problems that cannot be resolved with the information in this manual, please contact us by telephone, email, or on the web at www.geautomation.com/support.

AMERICAS

Phone: 1-800-433-2682;
1-780-420-2010 (if toll-free option is unavailable)
Email: digitalsupport@ge.com
Language: English

EUROPE, MIDDLE EAST & AFRICA

Phone: +800-1-433-2682;
+420-296-183-331 (if toll-free option is unavailable)
Email: digitalsupport.emea@ge.com
Language: English, French, German, Italian, Spanish

ASIA

Phone: +86-400-820-8208
+86-21-3877-7006 (India, Indonesia, & Pakistan)
Email: digitalsupport.apac@ge.com
Language: Chinese, English

PAC Product Information

Product	Version
PAC Machine Edition Logic Developer PLC QP+ (View / PC)	9.70
PAC Change Management Server Client Scheduler Engine	9.70
PAC Productivity Suite ¹	3.60
Note ¹ PAC Productivity Suite is made up of several chained installs that will install the required components and is only available from the PPS Disk.	

Product	Version	Engineering Workstation	Operator Console	Application Server	System Server
PME (LD PLC)	9.50	✓			
HMI (CIMPPLICITY)	10.00	✓	✓	✓	
HMI (iFix)	5.9	✓	✓	✓	
EGD Driver	7.40k	✓	✓	✓	✓
EGD Tools	6.01	✓	✓	✓	✓

Release Notes

When upgrading from Versions of PAC Machine Edition older than 9.0 your PME window settings and system options may be reset.

Fixed Issues

A subset of fixed issues specific to the release is available within in the “fixed issues” document on the installation disk and installed to the help directory

A detailed history can be found on the support page:

https://digitalsupport.ge.com/communities/en_US/Article/PAC-Fixed-Issues

New Features

General

Project Version

Added a version property to projects to allow saving in the format used for previous versions. Supported versions include 9.00, 9.50, and current.

Project Properties

Added properties to show the name of the user logged into the workstation and the timestamp of when the project was last modified.

Toolchest Sorting

Added support for sorting entries in the Toolchest by either name or version. When sorting by version, the version string shown for the item's preview is used. If no version string is available, it defaults to the legacy sorting method. The sorting method can be set through the Options tab of the Navigator, or by right-clicking in the Toolchest.

Note: This was also shipped in PME 9.50 SIM 10.

User Options Import and Export

Added support for importing and exporting user options in PME. Two menu options were added to the "Options" tab's right-click menu to export and import. User options can also be imported from windows command prompt.

Note: This was also shipped in PME 9.50 SIM 13.

Hot Key IDE Navigation

Added support for navigating to the next and previous visible tool windows using **CTRL + F6** and **CTRL + SHIFT + F6** and to navigate between the tabs/panes within a tool window using **CTRL + TAB** and **CTRL + SHIFT + TAB**.

Note: This was also shipped in PME 9.50 SIM 13.

User Interface Improvements

The following improvements have been made to the user interface:

- Added new "Photoshop" theme
- Improved support for 4K displays

Logic Developer PLC

GSDML Updates

The following installed GSDML's are updated from the ones shipped with PME 9.50

- GSDML-V2.3-GEIP-RX3iPNS-20170109

RSTi EP Standalone Controller

Added support for the CPE100 and CPE115 PACSystems RSTi EP Standalone Controllers.

Note: Support for the CPE100 was also shipped in PME 9.50 SIM 1, and support for the CPE115 was also shipped in PME 9.50 SIM 8.

Default HWC Compression Level set to High

The default HWC compression level is now set at high for new PACSystems Targets.

Note: This was also shipped in PME 9.50 SIM 1.

PROFINET GSDML Schema Support

Added the ability to import PROFINET GSDML's created with schema v2.32 & v2.33

Note: This was also shipped in PME 9.50 SIM 1.

Embedded SNTP Client

The CPU's (CPE305, CPE310, CPE330, CPE400) Embedded Ethernet interface may be configured as a Simple Network Time Protocol (SNTP) client which allows synchronization of the high-resolution Time of Day Clock to an SNTP network time server. This capability provides a consistent time across multiple systems so that all produced EGD exchanges use the CPU's Time of Day Clock for the time stamp.

Note: This was also shipped in PME 9.00 SIM 10 & PME 9.50 SIM 2.

RX3i Redundancy CPU support for Hot Standby Redundancy (CPE400)

The CPE400 may be used as a RX3i Redundancy CPU for Hot Standby Redundancy with PROFINET IO.

Note: CPE400 Firmware version 9.30 or higher is required for redundancy support.

Note: This was also shipped in PME 9.50 SIM 5.

Support for Single-RMX Redundancy

Removed validation requiring 2 RMX modules for a redundant pair of CPE330s with FW version 9.75 or higher.

Note: This was also shipped in PME 9.50 SIM 14.

Support for new hardware

- Power usage of the new IC695PNC001-Bxxx PROFINET controller may now be tracked using the new configuration option.
- Added support for CPL410.
- Added support for IC695ETM001-Kxxx module.

Text Block Support Within FBD Multi-Select

The FBD Editor now supports Text Box's when selecting multiple items

Note: This was also shipped in PME 9.50 SIM 3.

Variable Element Filter Configurations

An “Include Variable Elements” option was added to the filter configuration dialog. The “include Variable Elements” option allows the filtering to evaluate tag elements instead of just the parent.

Figure 1: Variable Element Filter Configuration Dialog



Support for \$# Tags in FBD and ST

Added support to FBD & ST for tags starting with \$# (i.e. \$1234A)

Toolchest Drag-N-Drop of Profinet Devices to Embedded Profinet Ports

Added support to drag devices from the toolchest to embedded Profinet Ports.

Added System Variable for %SA5 on PAC Systems

Added the system variable #PS_FLT for %SA0005 to PAC Systems Projects

System Option – Catalog Update

Added a system option to allow a user to “Always Update, Never Update, Always Prompt” for PAC Systems Catalog Updates.

Support for String literals in the ST Editor

Added support for assigning a string literal to a string variable or parameter. String literals can also be used in the VAR CONSTANT section of an ST block. A string literal is text surrounded by double quotes, such as:

```
stringVariable := “Message text”;
```

Note: This was also shipped in PME 9.50 SIM 10.

Increased Communication Timeouts

The Connect and Request timeouts under Additional Configuration for a target has been increased from 60,000 ms to 120,000 ms.

Increased Block Count

The limit on the block count has increased from 512 to 768 on the CPE330, CPE400, and CPL410 starting with firmware revision 9.70.

Note: This was also shipped in PME 9.50 SIM 13.

Support for Control Modules

Control Modules are now available without requiring a PPS license.

Structured Text Editor

The structured text editor has been rewritten to boost performance, add support for line numbers, code snippets, better searching, better tooltips, and many other features.

VersaSafe Logic Blocks and Template Update

Updated VersaSafe logic blocks and template.

Note: This was also shipped in PME 9.50 SIM 16.

DNP3 Outstation Protocol

Added the ability to configure DNP3 communication protocol for the PACSystems Rx3i Rackless modules.

OPC UA Security Configuration

Added support for OPC UA Security Configuration in PME.

Note: Firmware version 9.80 or higher is required for OPC UA Security Configuration for CPE302, CPE305, CPE310, CPE330, CPE400, or CPL410.

Note: This was also shipped in PME 9.50 SIM 16.

Utilities

PACSystems Analyzer

Added support for getting forces, an option to not ping a controller before getting data from it, and redesigned the user interface to be easier to use.

Note: This was also shipped in PME 9.50 SIM 9.

View/ LDPC

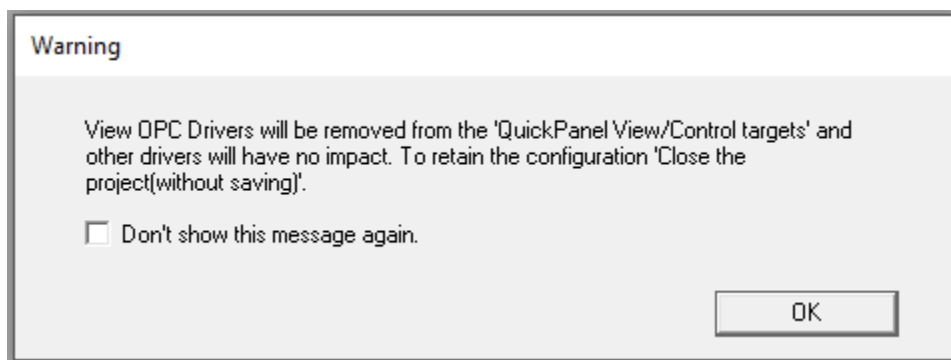
Proficy View Integrated OPC Server Version 5.21

View OPC UA drivers 5.21 are not supported by QuickPanel (QP+) View/Control models.

ODBC driver, SquareD, is not supported on Windows PC targets. Yokogawa Suite is not supported on Windows PC targets or QP+ targets with drivers version 5.21.

If the user has a saved project with QP View/Control targets in a version previous to PME 9.70, the user will get a popup message stating View OPC Driver will be removed from the 'QuickPanel View/Control targets' and other View Native drivers will have no impact. To retain the configuration, Close the project (without saving) ".

Figure 2: View OPC Driver Prompt



This popup will appear for every QuickPanel View/Control target. If the project has more number of QuickPanel View/Control targets, you can ignore the message by checking the option **'Don't show this**

message again’. Usually this message will be popped up while adding a new target (old QP View/Control) in a project but once check the check box, this message won’t popup while adding a new target. But if you save and open again the same project it pops up the dialog message again. If you don’t check the above check box, the pop up will be shown for every old QP View/Control target.

Note: This was also shipped in PME 9.50 SIM 11.

Support for User-defined Data Types (UDTs)

Added ability to configure UDT for QuickPanel+ . A UDT is a User-defined Data Type. After defining a UDT, you can create variables of that data type and use them in HMI application. UDT is not supported for PC and old QuickPanel Targets.

Note: This was also shipped in PME 9.50 SIM 13.

View Runtime Splash Screen Download Details

The View Runtime splash screen dialog will now show the windows user and machine that last downloaded the project to QP+.

Figure 3: About Runtime



Note: This was also shipped in PME 9.50 SIM 14.

Change Management

Parameters View of Function Blocks

Enabled the ability to view the parameters of a PACSystems function block when the project is not checked out.

Note: This was also shipped in PME 9.50 SIM 1.

Windows Server 2016, 2012 Standard, and R2 Support

Windows Server 2012 Standard and Windows Server 2012 R2 have been added to the list of supported operating systems for PAC Change Management.

Note: This was also shipped in PME 9.50 SIM 3.

Internet Explorer v10.0 and v11.0 Support

Internet Explorer v10.0 and v11.0 have been added to the list of supported Internet Explorer versions for PAC Change Management.

Note: Windows Server 2012 support was also shipped in PME 9.50 SIM 3.

Unity Pro XL Support

The Unity Pro XL module has been added to support Unity Pro XL projects (version 11.0 or greater) on PCM Thick Client.

Notes:

- Some operations of this type of projects may also require installation of Unity Pro XL (version 11.0 or greater) and Unity DIF (version 8.0 or greater) on PCM Thick Client.
- This was also shipped in PME 9.50 SIM 3.

Enhancement to the Server Configuration Utility

Added the ability to create and configure Subversion repository and service in the Server Configuration Utility.

Note: This was also shipped in PME 9.50 SIM 7.

Enhancement of Destroy Confirmation

The Destroy dialog has been updated to require the user to type “yes” in the edit box to confirm for destroying the selected project(s) or folder of projects from the PCM server or local computer.

Note: This was also shipped in PME 9.50 SIM 9.

Enhancement of Access Control Permissions

Added 3 new Change Management permissions, i.e. 'Destroy Non-Server Projects', 'Add Server Projects', and 'Destroy Server Projects'.

Note: This was also shipped in PME 9.50 SIM 10.

User Account Control Changes

The PAC Change Management client no longer requires elevated access to run properly on Windows 7 or Windows 10.

Known Issues

Indirect Reference incorrectly reporting as used addresses (00422649/DE3864)

An indirect reference when used in logic with a length treats the register address used as if it were using the direct reference. For example, "H_WIRE; MOVE_INT 6 999 @index,G,%R00001;" displays the address used as %R1 to %R6.

PPS Based CIMPLICITY Alarms Can Not be Acknowledged

There has been a fix to CIMPLICITY to address an alarm acknowledgement issue, download and install CIMPLICITY 9.50 SIM 4 or Greater.

Contact Information:

North & South America

18703 GH Circle
PO Box 508
Waller, Texas 77484
USA
T +1 281 727 5300

2500 Park Avenue West
Mansfield, Ohio 44906
USA
T +1 419 529 4311

9009 King Palm Drive
Tampa, Florida 33619
USA
T +1 813 630 2255

4112-91A Street
Edmonton, Alberta T6E5V2
Canada
T +1 780 450 3600

Av. Hollingsworth, 325
Iporanga
Sorocaba, SP 18087-105
Brazil
T +55 15 3238 3788

Europe

Asveldweg 11
7556 BT Hengelo(O)
The Netherlands
T +31 74 256 1010

Siemensring 112
D-47877 Willich
Germany
T +49 2154 499 660

30/36 Allee du Plateau
93250 Villemomble
France
T +331 48 122610

6 Bracken Hill
South West Industrial Estate
Peterlee, Co Durham
SR82LS, United Kingdom
T +44 191 518 0020

3 Furze Court
114 Wickham Road
Fareham, Hampshire
PO167SH, United Kingdom
T +44 132 984 8900

Via Montello 71/73
20038 Seregno
Italy
T +39 0362 2285207

Selska cesta 93
10000 Zagreb
Croatia
T +385 913654292

ul. Konstruktorska str 11A
02-673 Warsaw
Poland
T +48 22 4589237

Hungári körút 166-168
H-1146 Budapest
Hungary
T +36 14624034

Hajkova 2747/22
130 00 Praha 3
Czech Republic
T +42 2 81002666

Zelezniarska 13
811 04 Bratislava
Slovakia
T +42 1252442071

Blegistrasse 21,
P.O. Box 1046
CH 6341 Baar
Switzerland
T +41 (41) 7686215

2-4, Gara Herastrau St.
District 2, Nova Building,
5th floor 020334 Bucharest
Romania
T +40 212062506

Icerenkoy MAH. Topcu Ibrahim
Sk.
No:13 K:4 Icerenkoy
Istanbul, Turkey
T +90 2165739848408

Middle East & Africa
2 Monteer Road, Isando
Kempton Park, 1600
South Africa
T +27 11 974 3336

PO Box 17033
Jebel Ali Free Zone
Dubai,
United Arab Emirates
T +971 4883 5235

Asia Pacific

19, Kian Teck Crescent,
Singapore 628885
T +65 6501 4600

471 Mountain Highway
Bayswater, Victoria 3153
Australia
T +61 3 9721 0200

9/F Gateway Building
No.10 Ya Bao Road
Chaoyang District
Beijing, P.R. China
T +86 10 5821 1188

No 15 Xing Wang Road
Wuqing Development Area
Tianjin 301700
P.R. China
T +86 22 8212 3300

Lot 13112, Mukim Labu,
Kawasan Perindustrian Nilai
71807 Nilai, Negeri Sembilan
Malaysia
T +60 6 799 2323

Delphi B Wing, 601 & 602
6th Floor, Central Avenue
Powai, Mumbai 400076
India
T +91 22 6662 0566

NOF Shinagawa Konan Building
1-2-5, Higashi-shinagawa
Shinagawa-Ku, Tokyo
140-0002 Japan
T +81 3 5769 6873

Please visit our website for up to date product data.

www.Emerson.com

All Rights Reserved.

We reserve the right to modify or improve the designs or specifications of the products mentioned in this manual at any time without notice. Emerson does not assume responsibility for the selection, use or maintenance of any product. Responsibility for proper selection, use and maintenance of any Emerson product remains solely with the purchaser.

©2019 Emerson Electric Co.

