

# GP8

**Universal ICP Accelerometer  
Wireless Adapter**

# GP8

## Universal ICP Accelerometer Wireless Adapter

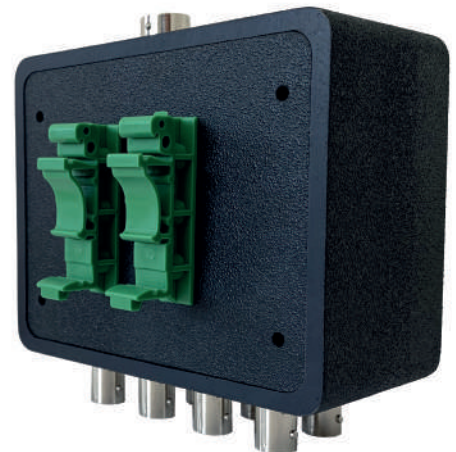
GP8 is the only 8-Channel Universal ICP Accelerometer to Wireless Phantom converter with Modbus communication for additional standard applications.



### Main Characteristics:

- Full waveform and spectrum data.**
- BLE 5.0** communication.
- Modbus** protocol added.
- 31 kHz** Sample Rate.
- 6400 líneas** de resolución.
- Velocity RMS Values **every 5 minutes**.
- Internal Velocity RMS calculated **every 30 seconds** for alarm settings
- 8 Simultaneous Measurement Points.**

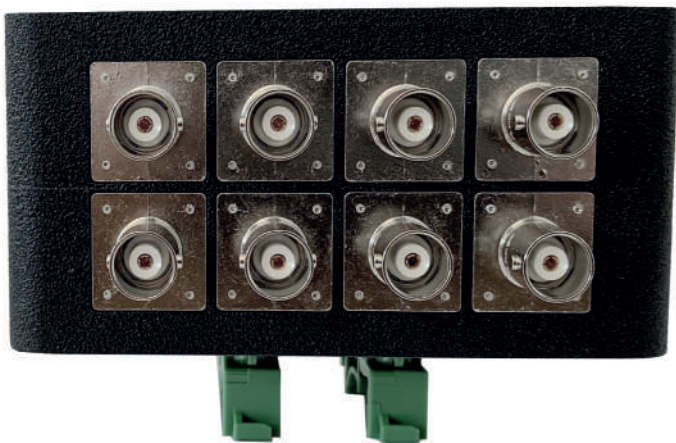
With the 8 embedded BNC connectors, you can connect any of your standard ICP accelerometers and add them to your **Phantom** continuous monitoring system.





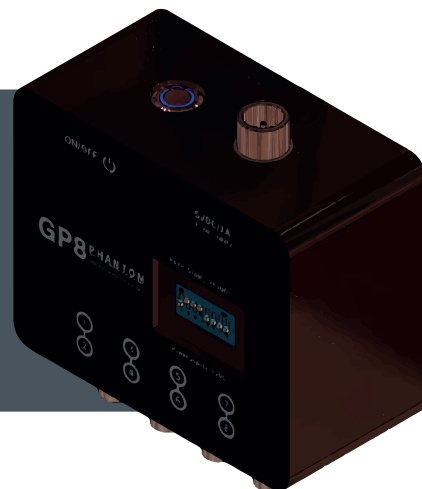
**GP8** Can work with 5VDC power supply. Additionally, GP8 works with **Phantom Standard Gateway** receiver, supporting more than 100 sensor at the same time.

The data collection interval is configurable so this way you can keep track of all your measurements constantly.

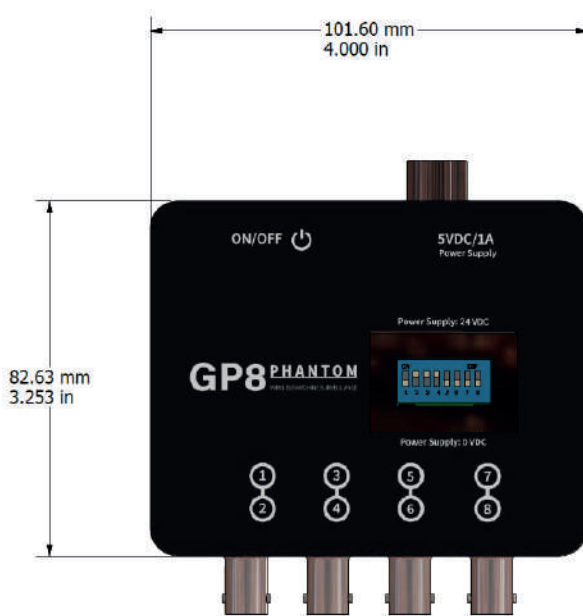


Compatible with your most reliable Erbesd Instruments software such as **DigivibeMX** and **WiSER Wibe**.

# DIMENSIONS & SPECIFICATIONS



25.00 mm  
.984 in



## MEASUREMENT

Max AC Input	2.5 Vpp
Power Supply	5VDC / 1 A
Sample Rate	31250 Hz
Channels	8 Channels
Internal Temperature Accuracy	± 5 °C (± 41°F)
Status (every 5 minutes)	Temperature and RMS
Data Interval	10 minutes (configurable)

## CONNECTIVITY AND SOFTWARE

Wireless Protocol	Bluetooth BLE 5.0
	Modbus via Gateway
Operating Frequency	2.4 GHz
Wireless Range	100m Line Sight
Software	DigivibeMX (Phantom, M20, M30) WiSER Vibe
Compatibility	

## DIMENSIONS AND FIXTURE

Dimensions	102 x 83 x 51 mm
Weight	350 gr
Enclosure Material	Nylamid
Fixture Standar DIN Rail	(35 mm, 42 mm wide)

## ENVIRONMENTAL CONDITIONS

Base Temperature Range	-40 °C to +75 °C (-40 °F to +176 °F)
------------------------	---



# **ERBESSD INSTRUMENTS®**

**WORLDWIDE toll-free:**

**+1-877-223-4606**

**ENGLISH:**

**Sales, Service & Support Engineer**

**+1-518-874-2700**

**info@erbessdreliability.com**

**SPANISH & FRENCH:**

**Sales, Service & Support Engineer**

**+52 (55) 6280-7654 / +52 (999) 469-1603**

**info@erbessd-instruments.com**

**BUY ONLINE**

**[www.erbessd-instruments.com](http://www.erbessd-instruments.com)**

ALL THE IMAGES ARE FOR ILLUSTRATIVE PURPOSES ONLY. THE FINAL PRODUCT MAY VARY DEPENDING ON THE VERSION AND/OR THE CHANGES OR UPGRADES MADE TO THE PARTS AND COMPONENTS OF THE DEVICES

© 2018 ERBESSD INSTRUMENTS

GP8-DS2020.0420.17