

EMO-500/E rev. 1

Industrial Enclosure

Ratio Monitor for Plural Component Proportioners

- ✓ Dual flow meter support
- ✓ Programming lockout key
- ✓ Four alarm lights
- ✓ Four industrial push-button controls



- ✓ Alarm siren & silencer
- ✓ Both RS-232 & 485 serial communications
- ✓ Enclosure meets NEMA type 12 & 13 standards

The EMO-500/E is designed to provide continuous monitoring of plural component proportioning equipment. When off ratio conditions are detected, the unit provides visual and audible alarms with an option to terminate pump operation in extreme cases. The monitor will also maintain an accurate record of material usage on a per job or per shift basis, and may be networked to a PC for long term reporting and record keeping. The EMO-500 is linked to a pair of flow meters which precisely meter the accuracy of the proportioning equipment, and will trigger an alarm during a catalyst fault event. The unit is mounted into a pre-wired industrial enclosure complete with red and amber alarm lamps, push button controls and an alarm annunciator. Serial communication and intrinsic safety barriers are optional extras. Local 110 VAC power is required.

EMO-500/E Industrial Enclosure

Quick Review of Key Functions

1-Quick Programming:

These programmable functions are printed in red on the upper rows of keys F1-1.

The most significant functions are:

Sample Amount:	The # of pulses counted in order to update ratio calculations
Ideal Ratio:	The desired 2K ratio-the alarm and warning settings trigger on deviations from this value.
Warning:	This is set as a % ratio deviation from the Ideal Ratio. For example: 10%.
Alarm:	This is set as a % ratio deviation from the Ideal Ratio. For example: 50%.

To access Quick Programming functions on the EMO-500 Industrial Enclosure follow these procedures:

- 1 Be sure the programming key is set to the off position (OUT).
- 2 Hold down the SCROLL DISPLAY button.
- 3 Press any of the upper keypad keys (F1-1) - the function is noted in red on the key.
- 4 Enter the correct value-Hit ENTER to exit.

* Note: Quick programming will work if programming lock key is set to on (IN).

2-Full Programming:

Full programming functions are indicated on the front label above the upper row of keys. Full programming can be activated by pushing in and turning the programming lock key to ON, the keypad buttons F1-F6 immediately below each function description will then operate that function.

3-Warning & Alarm Indicators:

This unit is equipped with 2 panel lights (red & amber) and an annunciator.

Warning and Alarm parameters are accessed as per the Quick Programming procedure outlined above.

Warning = Amber Light

When the warning % is exceeded, the amber panel light will be activated. The panel light will remain on until a satisfactory ratio is measured by subsequent samples.

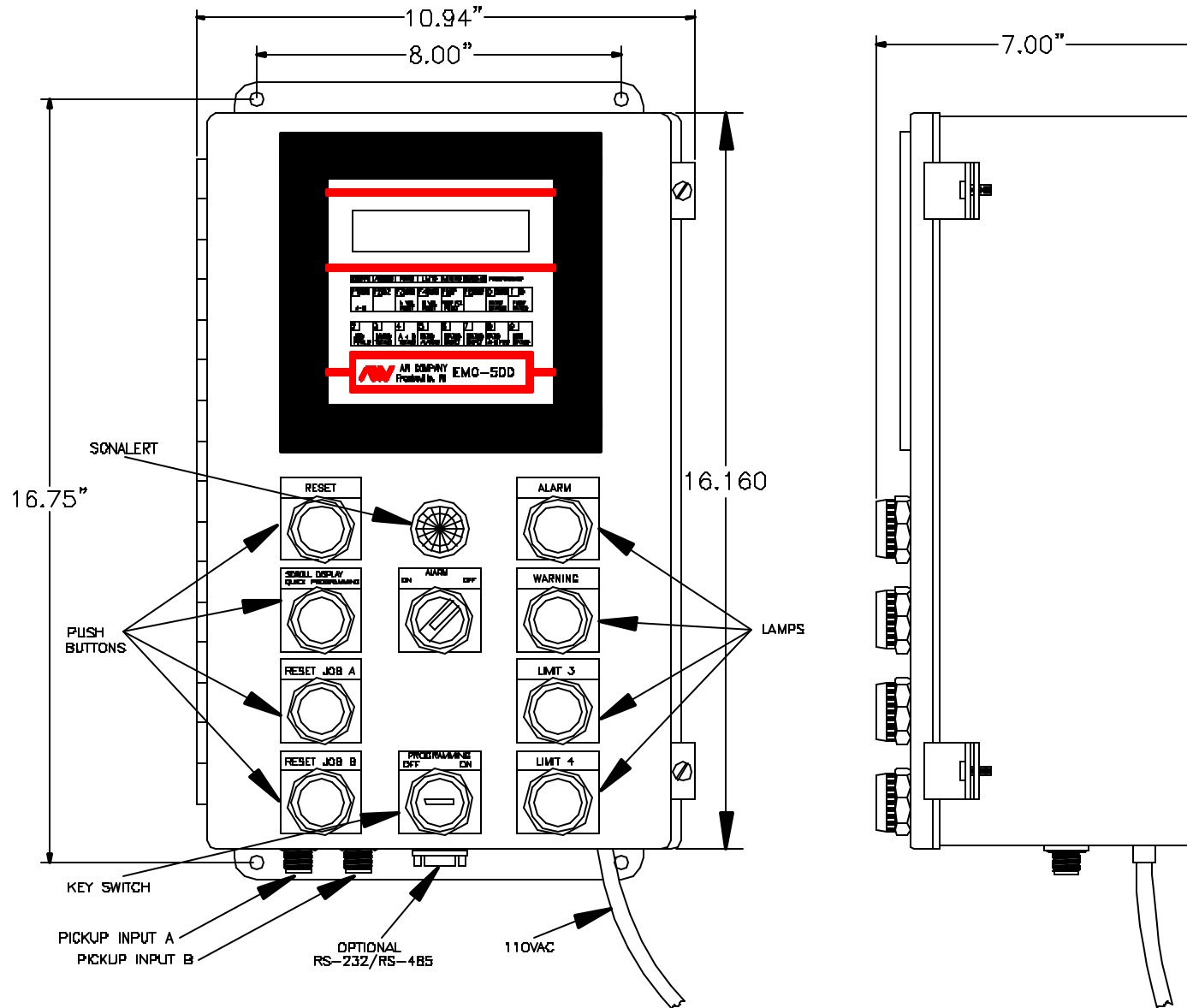
Alarm = Red Light

When the alarm % is exceeded, the red panel light and annunciator will be activated. The panel light will remain on until a satisfactory ratio is measured by subsequent samples.

Panel Lights

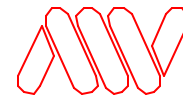
The panel lights will remain on until the next good sample is measured, therefore, the measurement should be considered off-ratio until the panel lights go out-then allow sufficient time for the off ratio material to clear the lines.

EMO-500 ENCLOSURE



PURCHASED PART DRAWING

THIS PRINT, INCLUDING THE INFORMATION CONTAINED IN IT, IS THE PROPERTY OF AN COMPANY. IT IS CONSIDERED PROPRIETARY IN NATURE AND MAY NOT BE USED OR DISCLOSED OUTSIDE OF AN COMPANY, EXCEPT UNDER PRIOR WRITTEN AGREEMENT. ANY MODIFICATIONS MADE TO OR COMMENTS WRITTEN ON THIS DRAWING BY UNAUTHORIZED PERSONNEL WILL VOID THIS DRAWING. ALL DIMENSIONS SHOWN ARE SUBJECT TO CHANGE WITHOUT NOTICE.



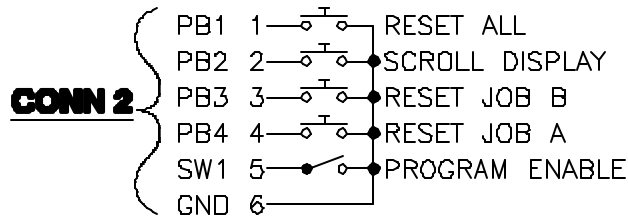
AN COMPANY
 8809 INDUSTRIAL DRIVE
 FRANKSVILLE, WI 53126
 TEL # (262) 884-9800
 FAX # (262) 884-9810

TITLE: EMO-500/E INDUSTRIAL ENCLOSURE

DRAWING NUMBER: EMO5721H PART NUMBER: AA00502A

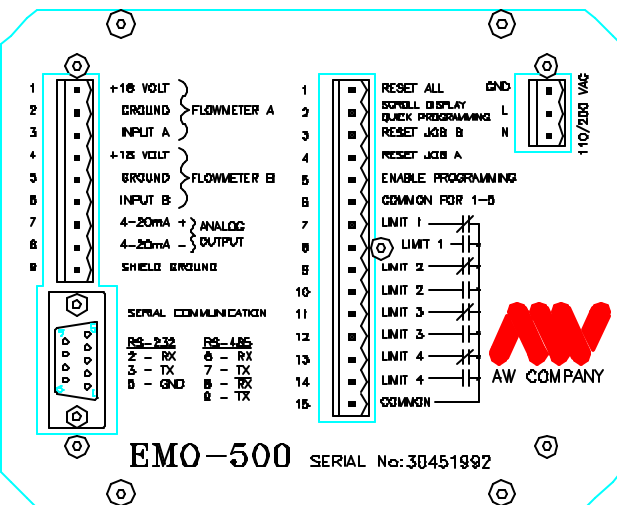
DATE: 03-14-02 REV: H DRAWN BY: SHANE WILSON

CHECKED BY: C.H. PAGE 1 OF 1 SCALE: NONE



CONN 3

CONN 2



CONN 1

CONN 1

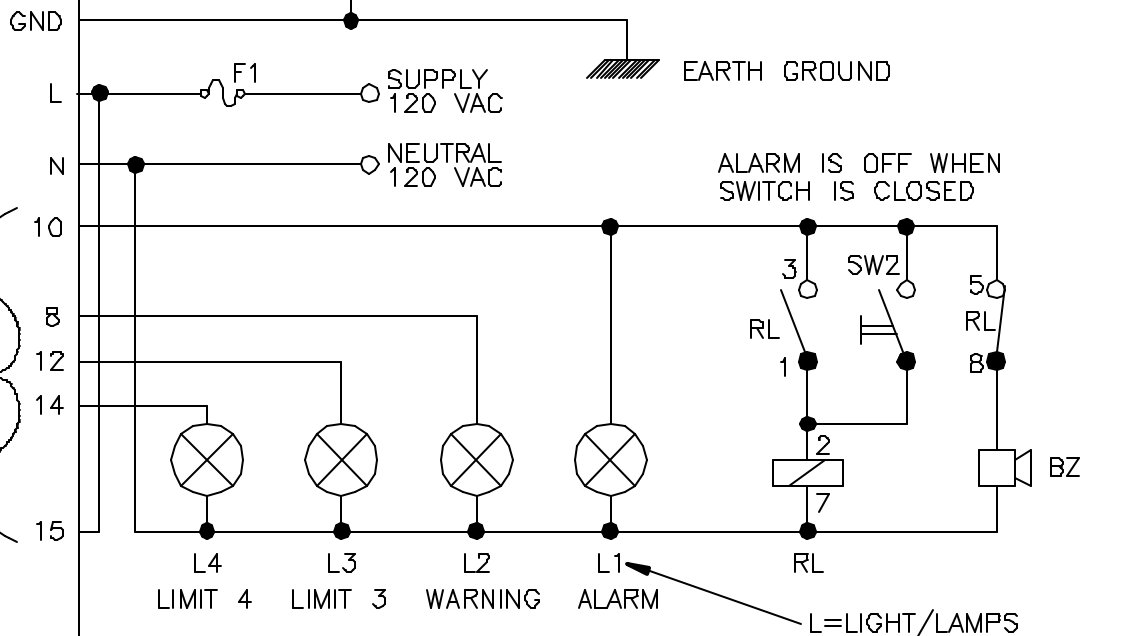
CONN 2

CONN 3

INPUT A - 3
GND - 2
+18VDC - 1

INPUT B - 6
GND - 5
+18VDC - 4

GROUND TO EMO-500
SCREW ON DOOR



Intrinsic Safety Barriers (Optional)
PEPPERL & FUCHS Z787 SHOWN

PURCHASED PART DRAWING

THIS PRINT, INCLUDING THE INFORMATION CONTAINED IN IT, IS THE PROPERTY OF AW COMPANY. IT IS CONSIDERED PROPRIETARY IN NATURE AND MAY NOT BE USED OR DISCLOSED OUTSIDE OF AW COMPANY, EXCEPT UNDER PRIOR WRITTEN AGREEMENT. ANY MODIFICATIONS MADE TO OR COMMENTS WRITTEN ON THIS DRAWING BY UNAUTHORIZED PERSONNEL WILL VOID THIS DRAWING.



AW COMPANY
Piquetteville, Ohio 45359

TITLE: EMO-500 INDUSTRIAL

DRAWING NUMBER: EMO5308H

PART NUMBER: —

DATE: 01-28-02

REV: H

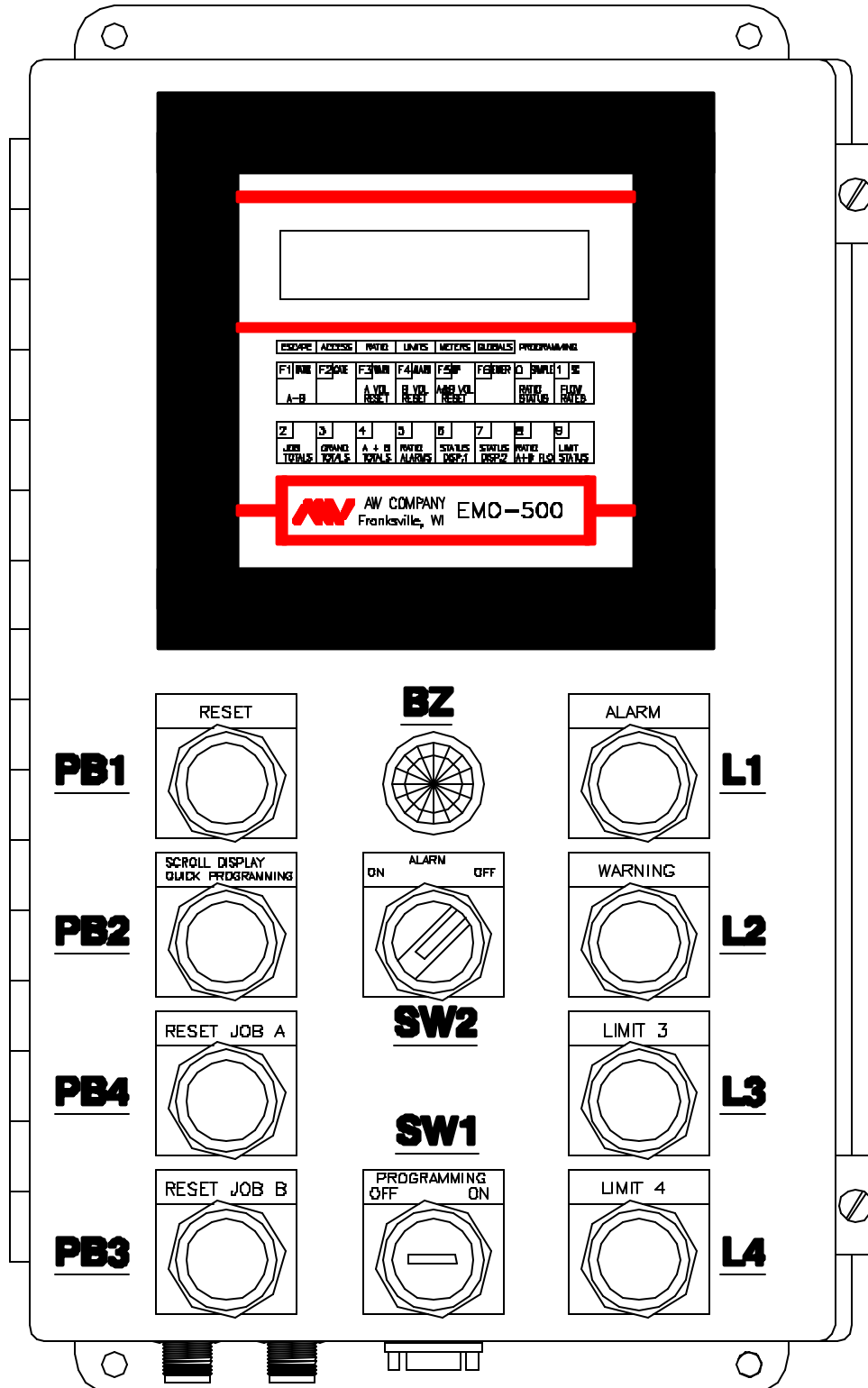
DRAWN BY: SHANE WILSON

CHECKED BY: A.W.

PAGE 1

OF 1

SCALE: NONE



PURCHASED PART DRAWING

THIS PRINT, INCLUDING THE INFORMATION CONTAINED IN IT, IS THE PROPERTY OF AW COMPANY. IT IS CONSIDERED PROPRIETARY IN NATURE AND MAY NOT BE USED OR DISCLOSED OUTSIDE OF AW COMPANY, EXCEPT UNDER PRIOR WRITTEN AGREEMENT. ANY MODIFICATIONS MADE TO OR COMMENTS WRITTEN ON THIS DRAWING BY UNAUTHORIZED PERSONNEL WILL VOID THIS DRAWING.



AW COMPANY
FRANKSVILLE, WI 53035

TITLE: EMO-500 INDUSTRIAL ENCLOSURE

DRAWING NUMBER: EMO5732A

PART NUMBER: —

DATE: 10-26-98

REV: A

DRAWN BY:

SHANE WILSON

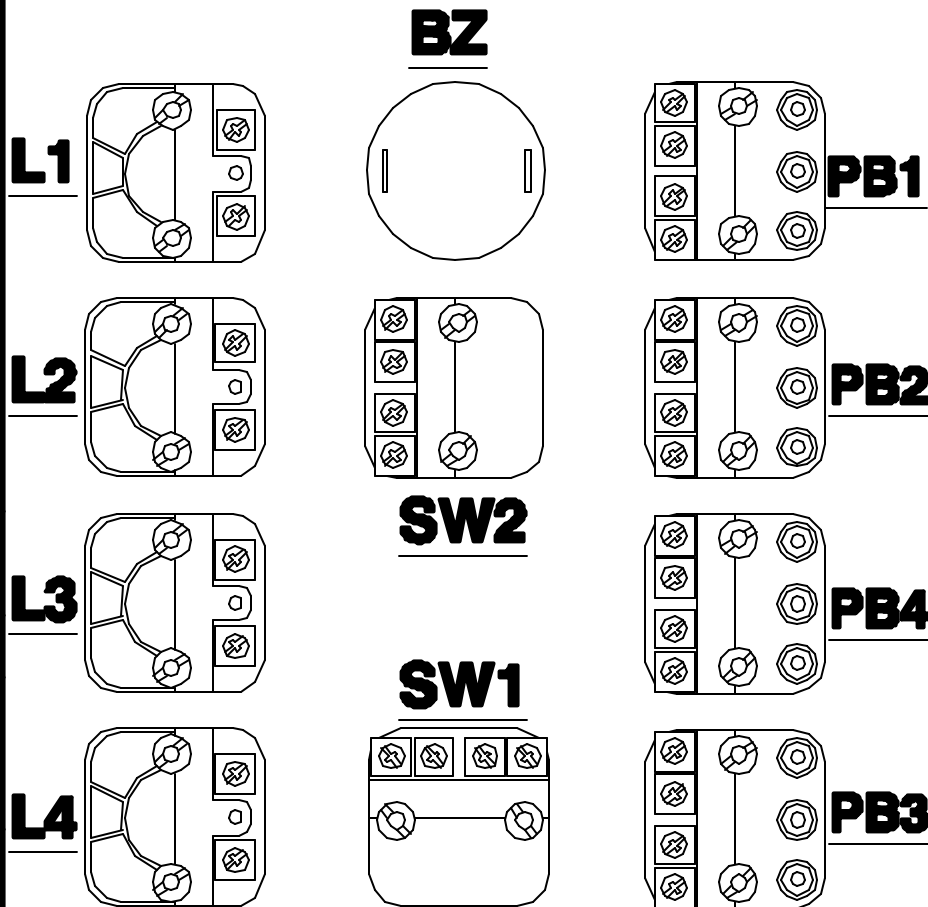
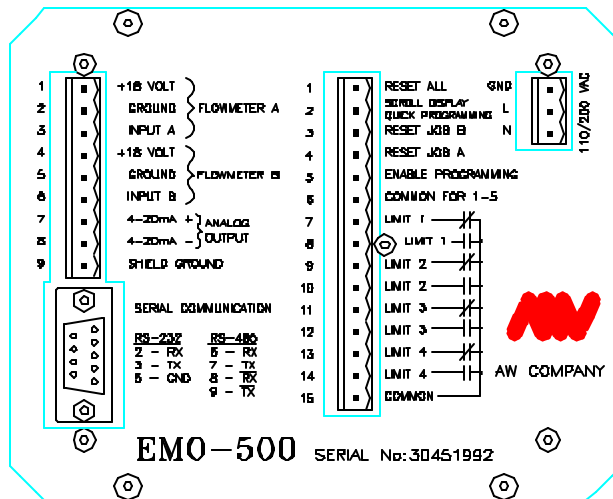
CHECKED BY: A.W.

PAGE: 1

OF: 1

SCALE: NONE

INSIDE TOP COVER OF EMO-500\E BOX



PURCHASED PART DRAWING

THIS PRINT, INCLUDING THE INFORMATION CONTAINED IN IT, IS THE PROPERTY OF AW COMPANY. IT IS CONSIDERED PROPRIETARY IN NATURE AND MAY NOT BE USED OR DISCLOSED OUTSIDE OF AW COMPANY, EXCEPT UNDER PRIOR WRITTEN AGREEMENT. ANY MODIFICATIONS MADE TO OR COMMENTS WRITTEN ON THIS DRAWING BY UNAUTHORIZED PERSONNEL WILL VOID THIS DRAWING.



AW COMPANY
FRANKSVILLE, MO 64518

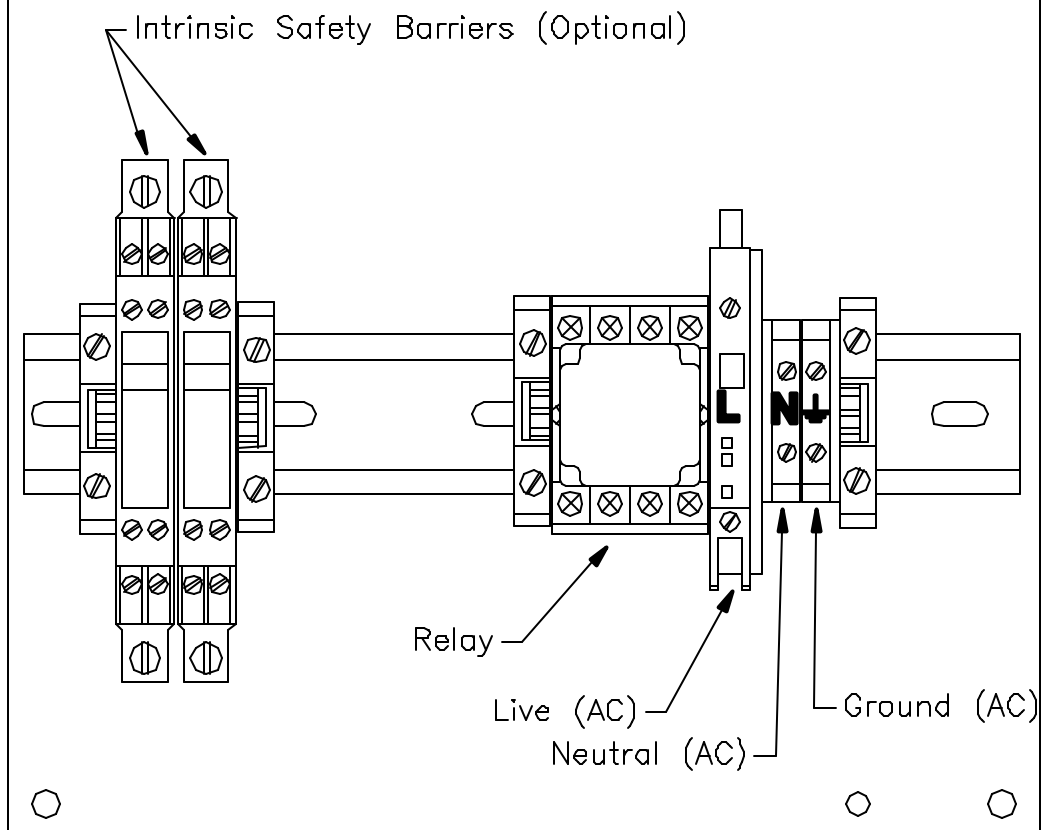
TITLE: EMO-500\E INDUSTRIAL ENCLOSURE

DRAWING NUMBER: EMO5514A PART NUMBER: —

DATE: 11-03-98 REV: A DRAWN BY: SHANE WILSON

CHECKED BY: A.W. PAGE 1 OF 1 SCALE: NONE

INSIDE OF EMO-500\E BOX



PURCHASED PART DRAWING

THIS PRINT, INCLUDING THE INFORMATION CONTAINED IN IT, IS THE PROPERTY OF AW COMPANY. IT IS CONSIDERED PROPRIETARY IN NATURE AND MAY NOT BE USED OR DISCLOSED OUTSIDE OF AW COMPANY, EXCEPT UNDER PRIOR WRITTEN AGREEMENT. ANY MODIFICATIONS MADE TO OR COMMENTS WRITTEN ON THIS DRAWING BY UNAUTHORIZED PERSONNEL WILL VOID THIS DRAWING.



AW COMPANY
FRANKSVILLE, IN 46015

TITLE: EMO-500\E INDUSTRIAL ENCLOSURE

DRAWING NUMBER: EMO5514A

PART NUMBER: —

DATE: 11-03-98

REV: A

DRAWN BY:

SHANE WILSON

CHECKED BY: A.W.

PAGE: 1

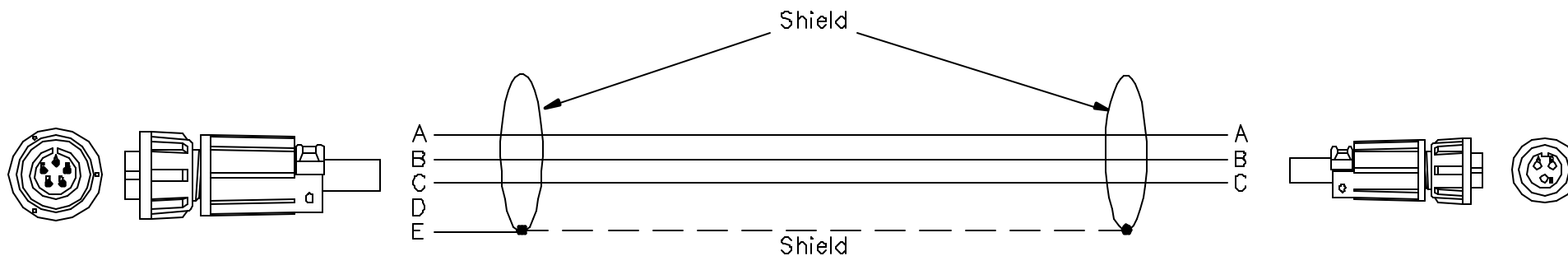
OF: 1

SCALE: NONE

EMO-500\E PICKUP CABLE

EMO Side

Pickup Side



THIS PRINT, INCLUDING THE INFORMATION CONTAINED IN IT, IS THE PROPERTY OF AW COMPANY. IT IS CONSIDERED PROPRIETARY IN NATURE AND MAY NOT BE USED OR DISCLOSED OUTSIDE OF AW COMPANY, EXCEPT UNDER PRIOR WRITTEN AGREEMENT. ANY MODIFICATIONS MADE TO OR COMMENTS WRITTEN ON THIS DRAWING BY UNAUTHORIZED PERSONNEL WILL VOID THIS DRAWING.



AW COMPANY
FRANKSVILLE, IN 46015

TITLE: EMO-500 PICKUP CABLE

DRAWING NUMBER: EMO5400B

PART NUMBER: —

DATE: 03-21-02

REV: B

DRAWN BY: SHANE WILSON

CHECKED BY: C.H.

PAGE 1

OF 1

SCALE: NONE