

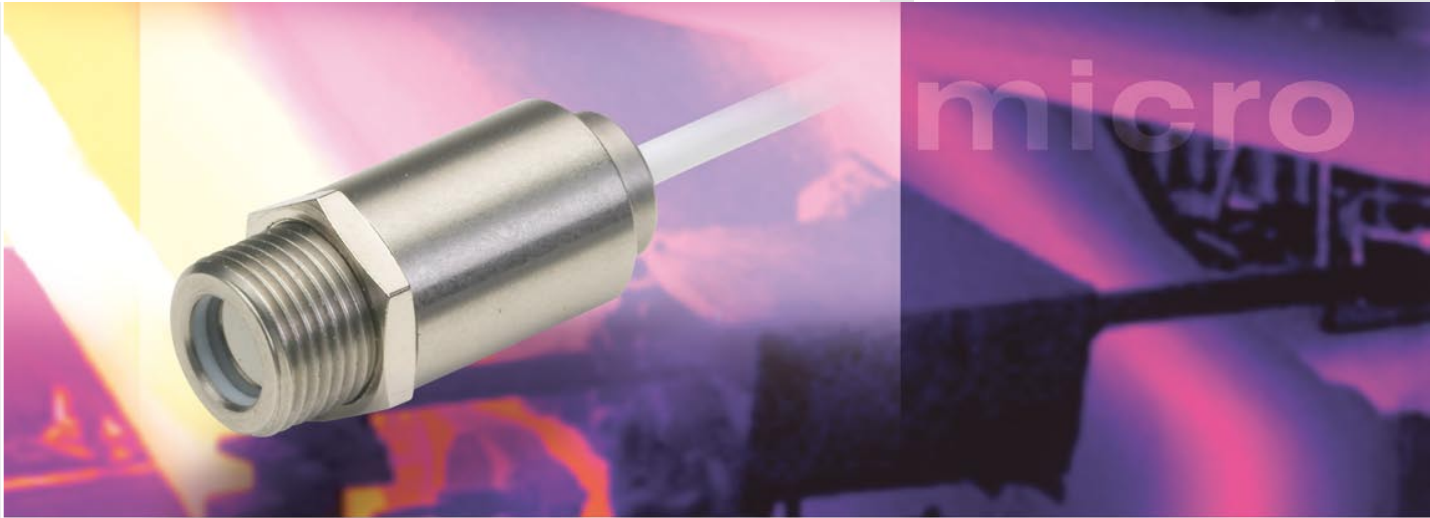


More Precision.

thermoMETER

Non-contact IR temperature sensors

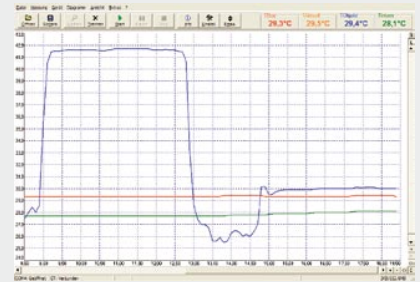




thermoMETER CSmicro

This non contact infrared temperature sensor is the world's smallest IR instrument. With just the compact optical head left, this instrument is perfect for the integration in space restricted applications. The electronic is miniaturized and integrated inside the sensor cable. The CSmicro is fully programmable and is available in four basic models, where each has a unique feature to succeed in the most challenging applications.

- Measuring range from -40 to 1600°C
- Robust precision silicon optics with AR coating
- Integrated controller with LED alarm indicator and smart electronic sighting support, selfdiagnostic or temperature code indication
- Up to 125°C ambient temperature without cooling
- Micro electronics integrated into the cable, field programmable; adjustable emissivity
- Analog output: 0 - 10V or 0 - 5V, 2wire current option, alarm output
- Short circuit and reverse polarity protection
- 8...14μm spectrum or short wavelength model with 1.6μm
- Optional USB programming interface and software



Software CompactConnect

- Display, graphic charting and recording of temperature readings
- Easy system configuration and sensor calibration
- Sophisticated signal processing features
- Programming of input and output channels

Optical specifications thermoMETER CSmicro

□ = smallest spot size (mm)

Standard focus optics

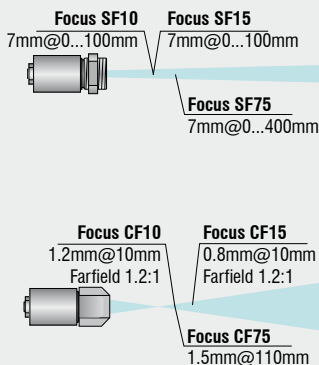
SF10	10:1	7	10	20	30	40	50	60	70	80
SF15	15:1	7	8	13	20	27	33	40	47	53
distance (mm)		0	100	200	300	400	500	600	700	800
SF75	75:1	7	7	7	8	11	14	17	20	23
distance (mm)		0	200	400	600	800	1000	1200	1400	1600

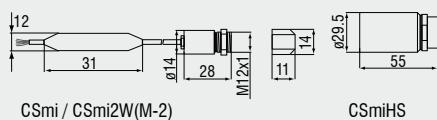
Close focus optics

CF10	10:1	7	5	1.2	8	16	24			
CF15	15:1	7	5	0.8	5	11	16	21	27	32
distance (mm)		0	5	10	15	20	25	30	35	40

Close focus optics (Integrated CF lense in the sensor head)

CF75	75:1	6.5	3.8	1.5	4.4	8.1	11.7	15.4	19	22.6
distance (mm)		0	60	110	150	200	250	300	350	400





Product identification

CSmi - SF10 - C1

Cable length
Fokus [SF / CF]
thermoMETER CSmi
thermoMETER CSmi2W (TwoWire sensor)

Model	CSmi-SF02-C1	CSmi-SF15-C1	CSmiHS-SF15-C4	CSmi2W-SF15-C1	CSmi2WM-2SF75-C1
Optical resolution	2:1	15:1	15:1	15:1	75:1
Temperature range	-40°C to 1030°C ¹		-20°C to 150°C	-40°C to 1030°C ¹	
Spectral range	8 to 14μm		8 to 14μm	8 to 14μm	
System accuracy	±1.5% or ±1.5°C ³		±1.0% or ±1.0°C ⁵	±1.0% or ±1.5°C ³	
Repeatability	±0.75% or ±0.75°C ³		±0.3% or ±0.3°C ⁵	±0.75% or ±0.75°C ³	
Temperature coefficient	± 0.05 K/K or ± 0.05% K				
Temperature resolution	0.15°C ⁷		0.025°C ⁷	0.1°C ⁷	
Response time (90%)	30ms		150ms	30ms	
Emissivity/gain	0.100 to 1.100 ²		0.100 to 1.100 ¹		
Transmissivity/gain ¹	0.100 to 1.100				
Signal processing ¹	peak hold, valley hold, average; extended hold function with threshold and hysteresis				
Dimensions controller	length 35mm; ø12mm				
Outputs/analogue	0 to 5V or 0 to 10V 1/10/100 mV/°C		4 to 20mA		
Loop resistance	-		1000Ω ⁹		
Outputs/alarm	Alarm (50mA / 24V)		0-30V / 500mA (open collector)		
Outputs/digital (optional)	USB				
Inputs	programmable functional input for external emissivity adjustment (0 - 5VDC), hold function or USB communication		programmable functional input for triggered signal output or peak-hold function		
LED functions	alarm indication, automatic aiming support, self diagnostic, temperature indication (via temp. code)				
Cable length	1m (standard); 0.5m between sensor and controller; 0.4m between controller and terminal		4m (0.5m sensor-controller sensor with massive housing TM-MHS-CT ø29.5mm x 55mm)	1m (standard); 0.5m between sensor and controller; 0.4m between controller and terminal	
Power supply	9mA (5 to 30VDC)		4...20mA (5 to 30VDC)		
Environmental rating	IP 65 (NEMA-4) sensor head				
Ambient temperature	Sensor: -20°C to 120°C Controller: -20°C to 80°C		Sensor: -20°C to 75°C Controller: -20°C to 75°C	Sensor: -20°C to 120°C Controller: -20°C to 75°C	Sensor: -20°C to 125°C Controller: -20°C to 75°C
Storage temperature	-40°C to 85°C (sensor and controller)				
Relative humidity	10 - 95%, non condensing				
Vibration	IEC 68-2-6: 3 G, 11-200Hz, any axis				
Shock	IEC 68-2-27: 50 G, 11ms, any axis				
Weight	42g		200g	42g	

¹ adjustable via software

² adjustable via 0 - 5VDC input or software

³ ± at ambient temperature 23±5°C; object temperature >0°C; whichever is greater

⁴ Epsilon =1, response time 1s; object temperature >450°C

⁵ at ambient temperature 23±5°C; object temperature >20°C; whichever is greater

⁶ object temperature <100°C; and time constant >0.2s

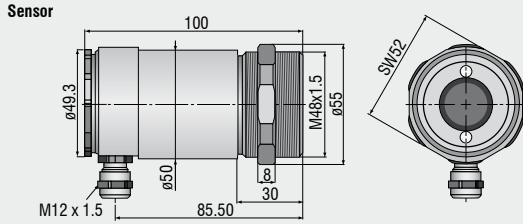
⁷ object temperature > 20°C; and time constant >0.2s

⁸ in dependence on supply voltage

Accessories page 64 - 65

- ▶ CF lense
- ▶ Protective window
- ▶ Mounting bracket / Mounting bolt
- ▶ Air purge collar
- ▶ Right angle mirror
- ▶ Software CompactConnect
- ▶ USB Kit

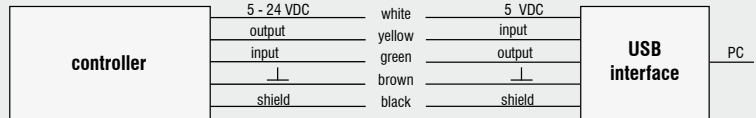
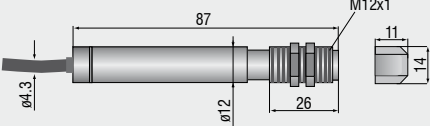
CSLaser



CS

sensor with integrated controller

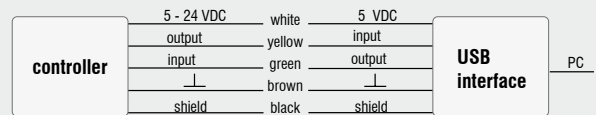
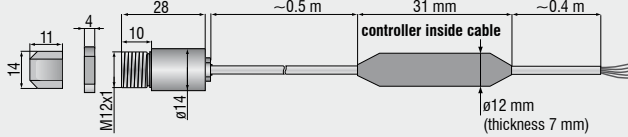
CF lense



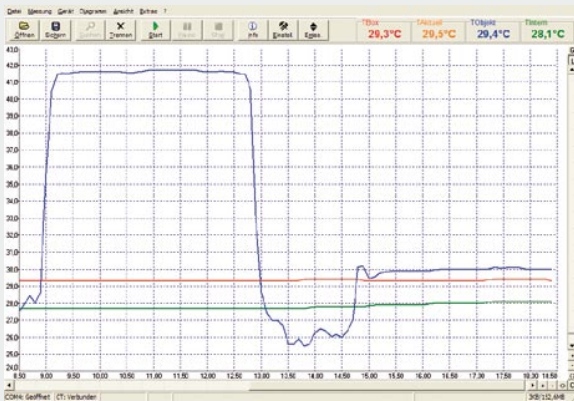
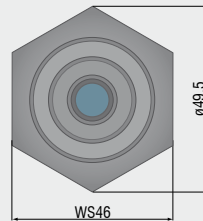
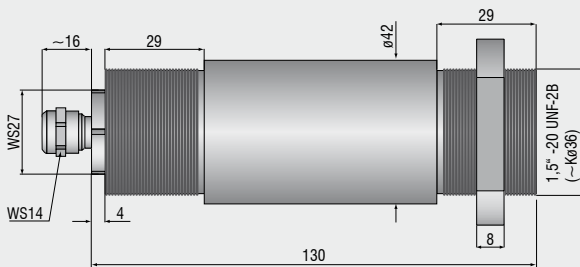
CSmicro

CF lense

sensor



CX



Software CompactConnect

- Display, graphic charting and recording of temperature readings
- Easy system configuration and sensor calibration
- Sophisticated signal processing features
- Programming of input and output channels

System requirements

- Windows XP, Vista, Windows 7
- USB 2.0
- Hard disc min. 30 MByte
- min. 128 MByte RAM
- CD-ROM drive

Mechanical accessories CS / CSmicro

Art. No.	Model	Description
2970279	TM-FB-CS	Mounting bracket, fixed
2970280	TM-AB-CS	Mounting bracket, adjustable
2970281	TM-MB-CS	Mounting bolt with M12x1 thread
2970282	TM-MG-CS	Mounting fork, adjustable in 2 axes, with thread M12x1
2970283	TM-AP-CS	Air purge collar for 10:1 sensors
2970284	TM-APL-CS	Air purge collar, laminar
2970285	TM-APLCF-CS	Air purge collar, laminar, integrated CF-lens
2970286	TM-RAM-CS	Right angle mirror for 90°C measurements
2970287	TM-USBK-CS	USB interface kit incl. software Compact-Connect

Optical accessories CS / CSmicro

2970277	TM-CF-CS	CF-Lens for CS series
2970278	TM-PW-CS	Protective window for CS series
	TM-CFH-CS	CF-Lens for 1.6µm sensor
	TM-PWH-CS	Protective window for 1.6µm sensor

Calibration CS / CSmicro

2970288	TM-CERT-CS	Certificate of calibration
---------	------------	----------------------------

Mechanical accessories CX

Art. No.	Model	Description
2970307	TM-AP-CX	Air purge collar, aluminium (anodized)
2970321	TM-FB-CX	Mounting bracket, adjustable in one axis, stainless steel
2970322	TM-AB-CX	Mounting bracket, adjustable in two axes, stainless steel
2970311	TM-USBK-CX	USB-Kit: USB programming adapter, Software CompactConnect

Optical accessories CX

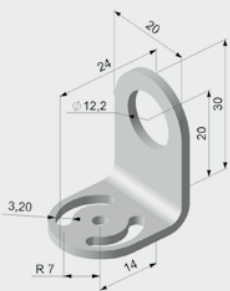
2970302	TM-CF-CX	CF-lens for thermoMETER CX
2970303	TM-PW-CX	Protective window for thermoMETER CX

Calibration CX

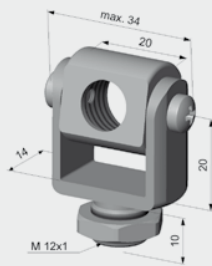
2970323	TM-CERT-CX	Certificate of calibration
---------	------------	----------------------------

Spare parts

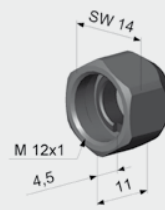
Controller, sensors and cables also available as spare parts - please contact Micro-Epsilon



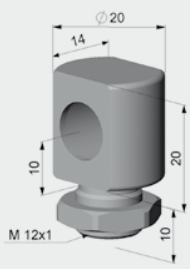
TM-FB-CS Mounting bracket, fixed



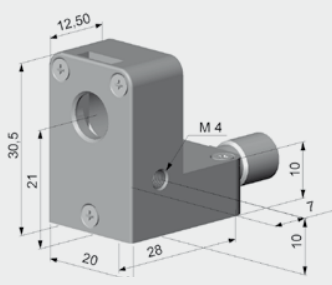
TM-MG-CS Mounting fork with M 12x1 thread adjustable in two axes



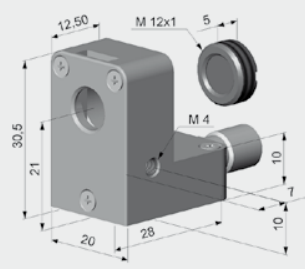
TM-CF-CS Close Focus Lens (LT sensors only)



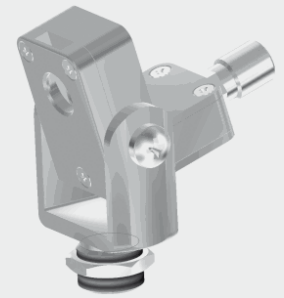
TM-MB-CS Mounting bolt with M12x1 thread adjustable



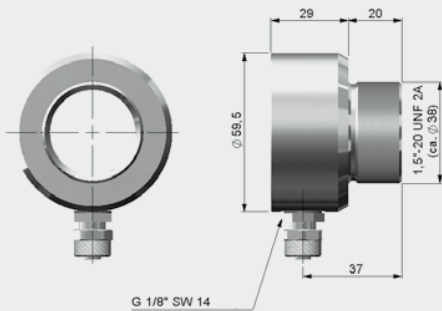
TM-APL-CS Air purge collar



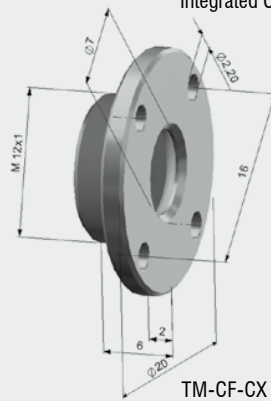
TM-APLCF-CS Air purge collar, laminar, integrated CF-lens



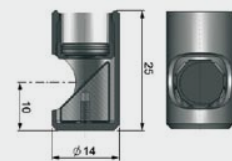
TM-APL-CS Laminar air purge collar and TM-MG-CS Mounting fork



TM-AP-CX Air purge collar CX sensors



TM-CF-CX CF-Lens
TM-PW-CX Protective window



TM-RAM-CS Right angle mirror

Sensors and measuring systems from Micro-Epsilon



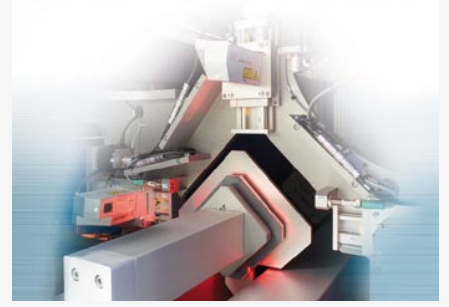
Sensors and systems for displacement, position and dimension

- Eddy current displacement sensors
- Optical and laser sensors
- Capactive sensors
- Linear inductive sensors
- Draw wire displacement sensors
- Laser micrometer
- 2D/3D profile sensors (laser scanner)
- Image processing



Sensors and systems for non-contact temperature measurement

- IR handheld
- Stationary IR sensors
- Thermal imager



Turn key systems for quality inspection

- of plastics and film
- of tires and rubber
- of endless band material
- of automotive components
- of glass