

IR-H Data Logging Software

Model: IR-VXG1E

(Software Ver.1.3□)

INSTRUCTIONS

Always keep this instruction manual with this software.

Please be sure to deliver this instruction manual to a person who uses this Software.

Request and notices

Thank you for purchasing software for IR-H Data logging software IR-VXG1E.
I would like you to read this manual before you using, in order to use IR-VXG1E correctly.

■ Application principals

This software could be used only under the agreement with these followings. Once you install and start using this software, we will consider you made an agreement with our application principals even if you did not made a clear statement on this.

■ Copyright

CHINO Corp. has the copyright on IR-VXG1E.

■ Prohibition

Renting, distribution, and creating copies of IR-VXG1E are prohibited by law.
Any kind of action of making copy except backing up purpose for the product is prohibited

■ License

This software can be used at one purchase per one computer as a principle

■ Hardware

Any problem will be out of CHINO's responsibility to support if the user caused the problem by any kinds of computer exchange related procedures.

■ Included application software

This software is applicable to save data with Excel^{*1} format. In order to use all the functions this software has, installing Excel^{*1} software will be required. You are able to obtain Excel either through computer providers as a pre-install, Chino purchases Excel and provides you Excel, or you purchase by your own. Please verify delivery specification and operational display specification tables.

■ OS

This software is designed for Windows95/98/NT4.0/2000/XP—feasible operation.

■ Accessories

Names	Quantity	Remarks
IR-H Data logging software	1	CD-R
Instruction manual	1	This manual
IR-VHC(RS-232C communication cable)	1	D-SUB 9pin female

*1: Microsoft Excel is registered trademarks of Microsoft Corporation in the USA.

*2: Windows95/98/NT4.0/2000/XP are registered trademarks of Microsoft corporation in the USA.

CONTENTS

1. Operation environment	1
1.1 Operation environment lists	2
2. Installing and Uninstalling	2
2.1 Installing your software program	2
2.1.1 Automatic setup program	2
2.1.2 When the setup is not started automatically	2
2.2 Uninstalling your software program	2
3. Connection with IR-H series	3
4. Operation	4
4.1 Start up	4
4.1.1 Kinds of buttons and contents in the menu screen	4
4.2 Recalling stored data	5
4.3 Saving the stored data	6
4.4 Display of Multi-point monitoring and One-point historical trend	7
4.4.1 Display of Multi-point monitoring	7
4.2.2 Display of One-point historical trend	7
5. Multi-point monitoring	8
5.1 Operation	8
5.2 Operating the navigating buttons	9
5.3 Quit	9
5.4 Write	9
5.5 Monitoring of the data in the table	10
5.6 Report format of the stored data	10
5.6.1 Creation of table format	11
5.6.1 Creation of graph format	12
5.7 Quit of the Multi-point monitoring	12
6. One-point historical trend	13
6.1 Operating the One-point historical trend	13
6.2 Quit of the One-point historical trend	13
7. Real-time measurement	14
7.1 Measurement preparation	14
7.2 Setting	15
7.3 Measurement	16
7.4 Stop, Save and Replay	17
7.5 Alarm summary	18
7.6 Quit of Real-time measurement	19
8. Parameters in saving	20
8.1 Common parameters	20
8.2 Parameters on real-time measurement	20

1. Operation environment

1.1 Operation environment lists

Hardware and software	Contents and Condition	
	CPU	Pentium 90 MHz or faster (*1)
	OS	Windows95, Windows98, WindowsNT4.0 Windows2000, Windows XP (*2)
	Memory	At least 16 MB (More than 32 MB recommended) This memory capacity is the minimum volume of memory required for operating this software independently. More memory is recommended.
	CD-ROM drive	A CD-ROM drive is required for installing this software.
	Hard disk	One or more hard disk drives of at least 20 MB free space (It may be built-in or externally attached.)
	Communications port	The communications ports supported by Windows. (*2) One communications port from COM1 to COM10 is used.
Display	Color high-resolution analog RGB. Compatible to applied resolution 640 × 480, 800 × 600, 1024 × 768, 1280 × 1024 dots and more than 256 colors	
Printer	Compatible to Windows. (*2)	
Software	If Microsoft Excel (*3) has been installed in your personal computer, data can be saved in the file of Excel format. However, the program will run, even if Excel (*3) has not been installed.	

This software is a 32-bit application software compatible to Windows95/98/NT4.0/2000/XP (*2).
It can be executed parallel to other applications but its normal operation is not guaranteed in all the conditions.

It may not work properly in the following situations.

- (1) When you have run any 32-bit application software not compatible to Windows95/98/NT4.0/2000/XP (*2).
- (2) When other application software have bugs causing troubles in Windows.
- (3) When other applications have used a large part of CPU or memory. (Especially software related to images.)
- (4) When the computer has a special built-in hardware or software drive.
- (5) When multiple applications have been activated and the performance of Windows (*2) has been degraded.

*1: Pentium is registered trademarks of Microsoft Corporation in the USA.

*2: Windows95/98/NT4.0/2000, XP are registered trademarks of Microsoft Corporation in the USA.

*3: Microsoft Excel is registered trademarks of Microsoft Corporation in the USA.

2. Installing and Uninstalling

2.1 Installing your software program

2.1.1 Automatic setup program

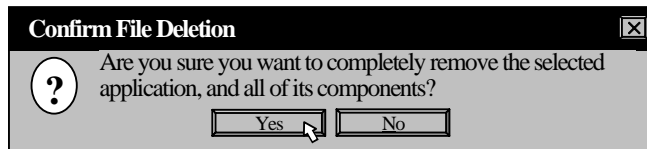
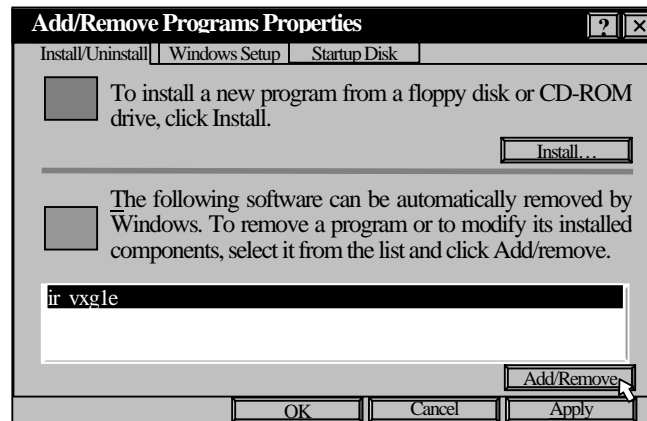
- 1) Insert the software CD-R into your computer. (OS: Windows95/98/NT4.0/2000/XP)
- 2) The Set up Wizard will open automatically. Follow the instructions on your screen.

2.1.2 When the setup is not started automatically

- 1) Insert the software CD-R into your computer. (OS: Windows95/98/NT4.0/2000/XP)
- 2) Click the [Start] button, point to [Settings], and then click [Control Panel].
- 3) Double-click [Add/Remove Programs].
- 4) After clicking [Install] in the following screen, the Setup Wizard will open automatically.
Follow the instructions on your screen.

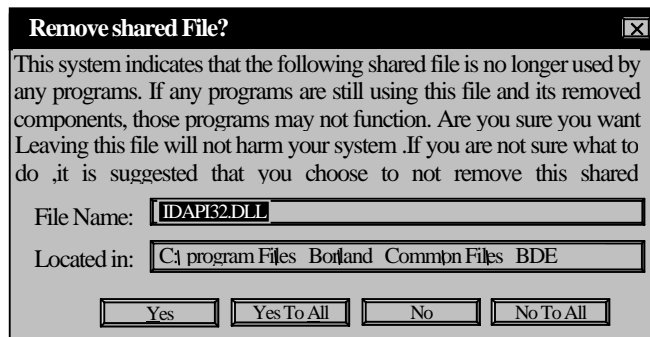
2.2 Uninstalling your software program

- 1) Click the [Start] button, point to [Settings], and then click [Control Panel].
- 2) Double-click [Add/Remove Programs].
- 3) Select the application software from the list in the right screen and click [Add/Remove Programs].
- 4) Click the [Yes] button in the following screen.



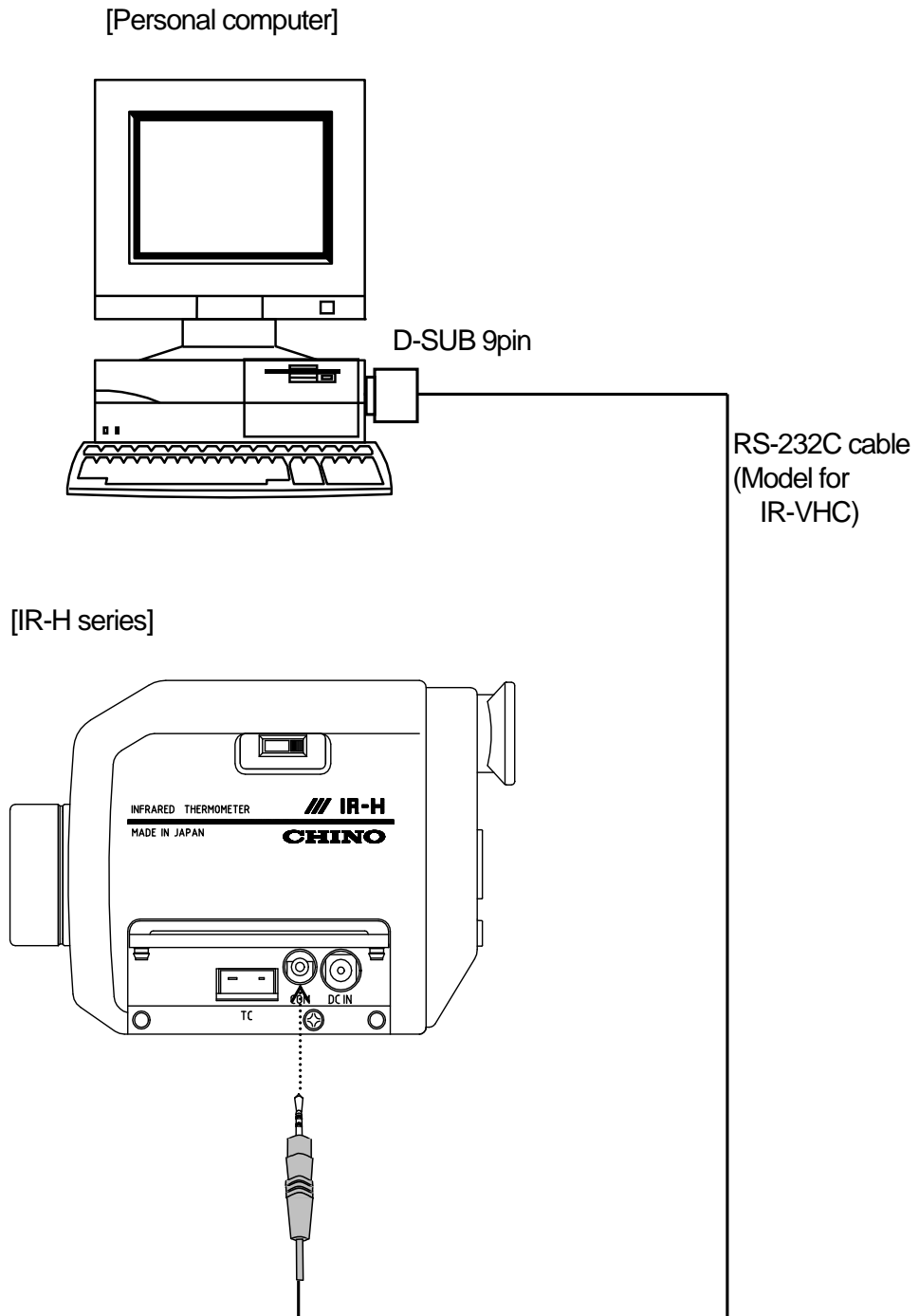
Caution

The following screen may appear depending on computers. If there may be other application using the file or if you are not sure, click the [No] button, and if you are sure there are no other application using it, click the [Yes] button.



3. Connections with IR-H series

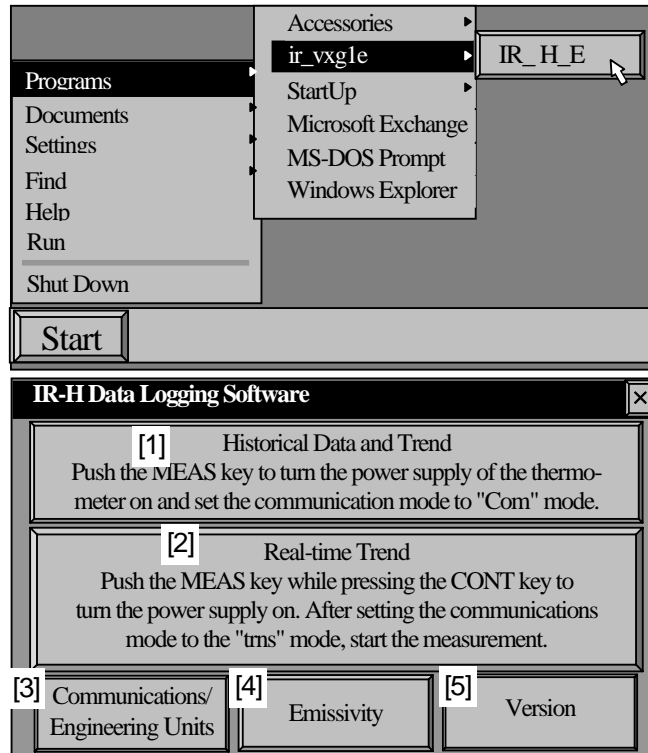
Connect your IR-H series and your personal computer with the RS-232C cable (Model for IR-VHC) attached with this software package.



4. Operation

4.1 Start up

- 1) Click [Start] button, point to [Program], point to [ir_vxg1e], and then click [IR_H_E], or click [IR_H_E.exe] in the folder being installed on Explorer.
- 2) [IR-H Data Logging Software] splash window will appear for a while and then the menu screen will appear.
- 3) The menu screen has two large buttons and three small buttons. You can enter into each mode by clicking a button.



4.1.1 Kinds of buttons and contents in the menu screen

Kinds of buttons	Contents
[1] Historical data and Trend	It is the mode for recalling the data being stored in your IR-H series. If you select this mode, you are not able to return to the menu screen. Press MEAS key to turn the power supply of your IR-H series on. Then set the communications mode of your IR-H series to " com ".
[2] Real-time trend	It is the mode for measuring temperature in real-time. If you select this mode, you are not able to return to the menu screen. Press MEAS key while pressing <input checked="" type="checkbox"/> key to turn the power supply of your IR-H series on. (The IR-H series becomes the continuous measurement mode.) Set the communications mode of your IR-H series to " trns " and then press MEAS key again to start a measurement.
[3] Communications/Engineering units	For the communications, select the serial port, COM1 or COM2 , of your personal computer. For the engineering unit, select C or F . (It should conform to the engineering unit being set on your IR-H series.) Click OK button. The screen will return to the menu screen.
[4] Emissivity table	The emissivity table is displayed for your reference. (Click a tab for the wavelength of your IR-H series .) Click OK button to return to the menu screen.
[5] Version	The version number is displayed. By clicking OK button to return to the menu screen.

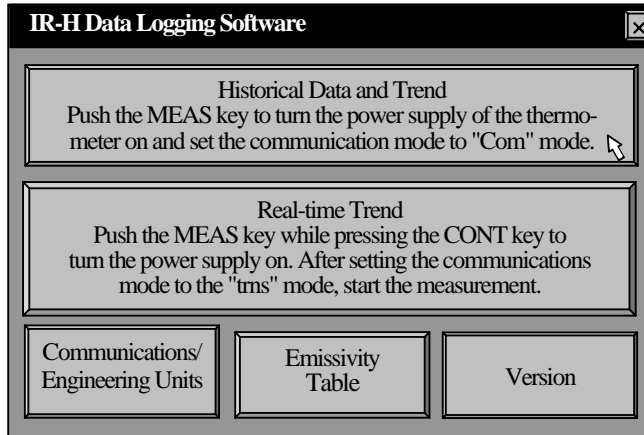
Caution

Make sure to set the communications port and the engineering unit by [Communications/Engineering Units] button prior to recall stored data or start a measurement.

4. Operation

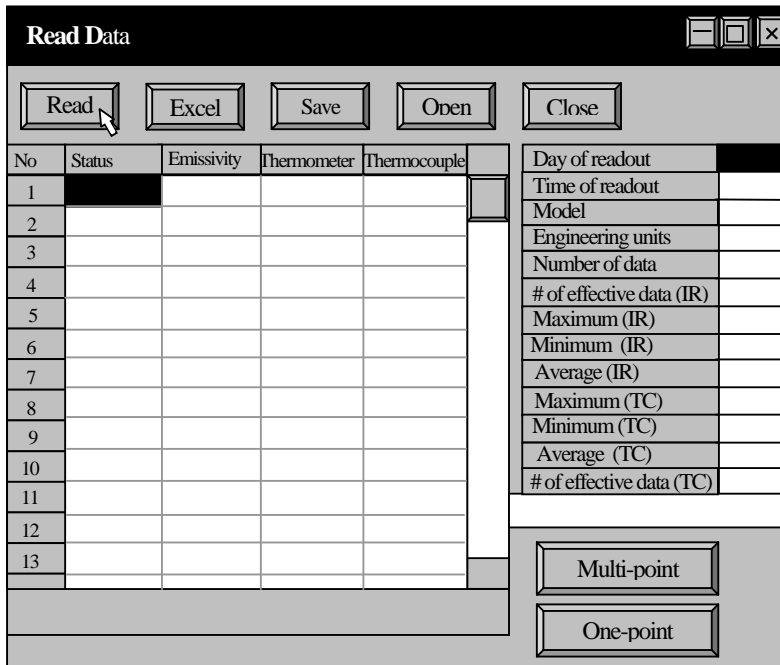
4.2 Recalling stored data

1) Connect your thermometer and your personal computer.



2) By clicking [**Historical Data and Trend**] button in the menu screen, [**Read data**] dialog box will appear.

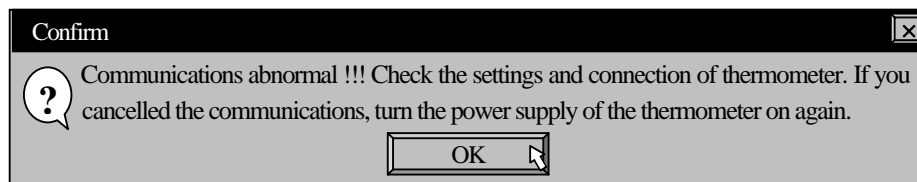
3) Turn the power supply of your thermometer on, and click [**Read**] button.



4) If the communications is normal, data will be filled in the table on the right side (From [**Day of readout**] to [**Number of Data**]) and then the displays of [**Now reading...**], [**Progress status display bar**], and [**seconds remains**] will appear on the lower panel. Next, data will be filled in the table on the left side and finally the remaining data for the table on the right side (From [**# of effective data (IR)**] to [**# of effective data (TC)**]) will be filled in.

Caution

If the communications is not normal, the message box shown below will appear. Click [**OK**] button and follow the instructions in the message box.



Remarks

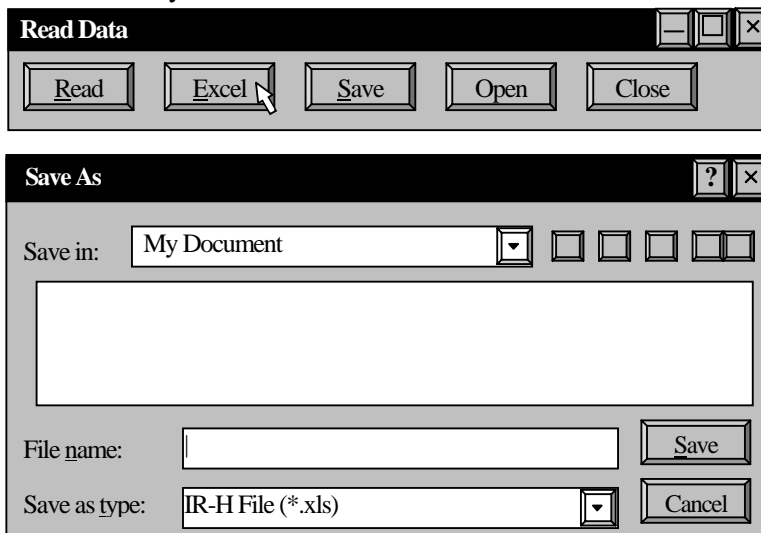
As the data recalling is one time only during this program runs, you need to start up this program each time you recall data from a file or through communications.

4. Operation

4.3 Saving the stored data

Save the data in the table into Excel or a file if necessary.

- 1) By clicking [**Excel**] button (or by pressing [**E**] key on your keyboard), [**Save as...**] dialog box will appear. Enter a file name and click [**Save**] button. The file extension "**xls**" will be assigned automatically.



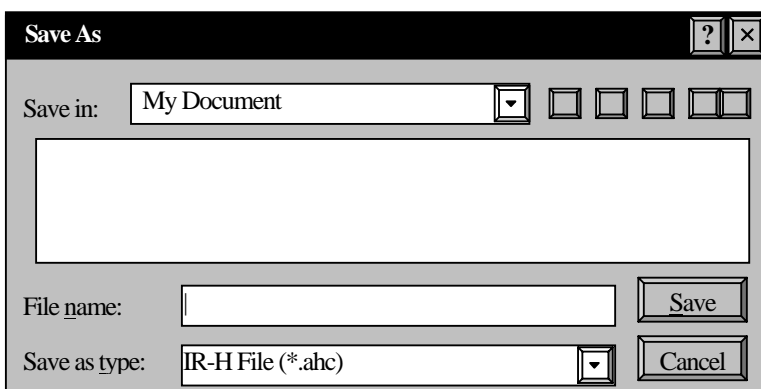
Remarks

Then the data will be exported to **Excel** with the displays of [**Now exporting...**] and [**Progress status display bar**].

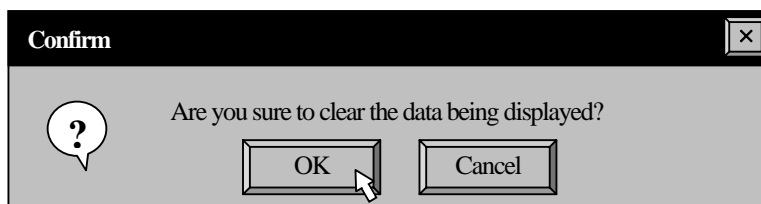
Caution

This function cannot be executed if Excel has not been installed. If Excel has not been installed, [**Failed to export. Confirm if Excel97 is installed.**] message box will appear.

- 2) By clicking [**Save**] button (or by pressing [**S**] key on your keyboard), [**Save as...**] dialog box will appear. Type a file name and click [**Save**] button. Then the data will be saved with the displays of [**Now saving...**] and [**Progress status display bar**]. The file extension "**ahc**" will be assigned automatically. This file is used in the process of replaying the stored data as shown in the next paragraph.



- 3) By clicking [**Open**] button (or by pressing [**O**] key on your keyboard), the message box shown below will appear. Click [**OK**] button and then [**Open**] dialog box will appear. Select a file name with the file extension "**ahc**" and click [**Open**] button. The stored data in the file selected will be displayed. To return to the original screen, click [**Cancel**] button.



4. Operation

4.4 Display of Multiple-point monitoring and One-point Historical Trend

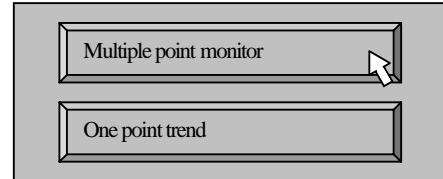
By using the read data, you can select multiple point monitoring or one point historical trend display.

On the multiple-point monitoring, the sequential measured data by corresponding measured number and measured objects are accumulated in a database table, and displayed in a report of table format or graph format.

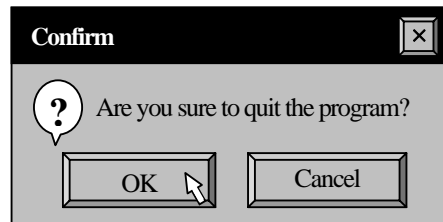
On the one point historical trend, data is displayed in a graph format as a trend of same measured object.

4.4.1 Display of Multiple-point monitoring

- 1) By clicking [**Multiple-point monitor**] button on the lower right (or by pressing [**M**] key on your keyboard), [**Multi-point Monitor (30 points)**] screen will appear.

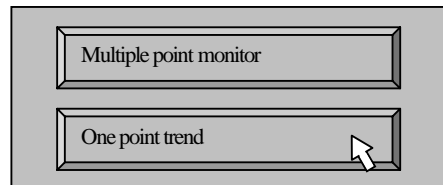


- 2) By clicking [**Close**] button or **X** button (or by pressing [**C**] key on your keyboard), the message box shown below will appear.
By clicking [**OK**] button, the program will quit and the screen will return to the menu screen of Windows.
By clicking [**Cancel**] button, the message will disappear.

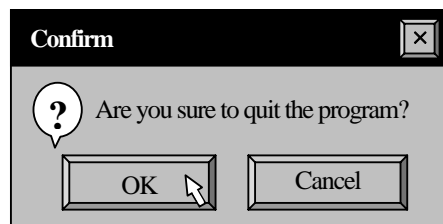


4.4.2 Display of One-point Historical Trend

- 1) By clicking [**One-point Trend**] button (or by pressing [**T**] key on your keyboard), [**One-point Historical Trend**] screen will appear.



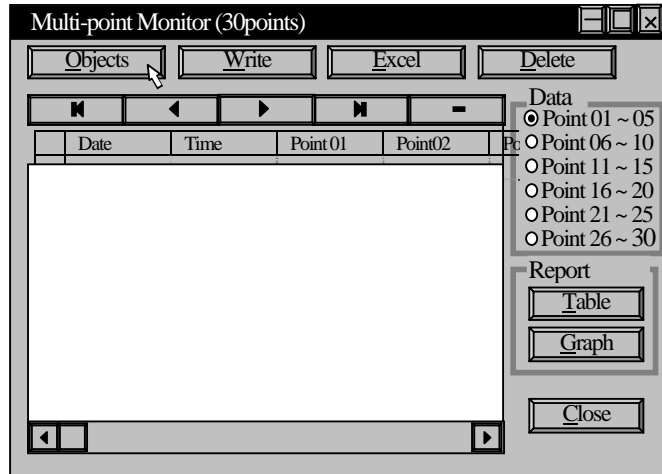
- 2) By clicking [**Close**] button or **X** button (or by pressing **C** key on your keyboard), the message box shown below will appear. By clicking [**OK**] button, the program will quit and the screen will return to the menu screen of Windows.
By clicking [**Cancel**] button, the message will disappear.



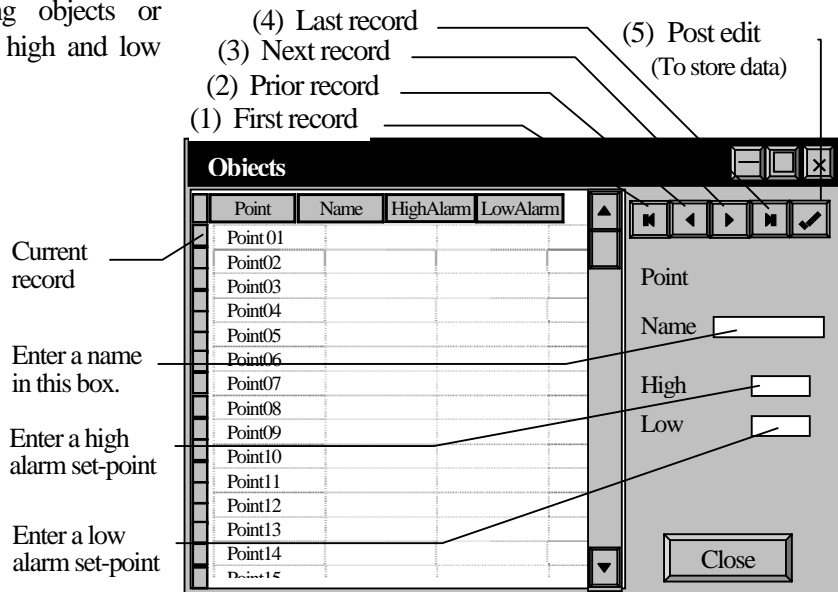
5. Multi-point monitoring

5.1 Operation

- 1) By clicking [Objects] button (or by pressing [O] key on your keyboard) on [Multi-point Monitor (30 points)] screen, [Objects] dialog box will appear.



- 2) Enter names of measuring objects or monitoring places and enter high and low alarm set-points.



- 3) There are navigating buttons at the upper right of the screen. These buttons are to select the records in the database table on the left side. The name of the button is displayed when the mouse is placed on that button for a while. The functions are as follows.

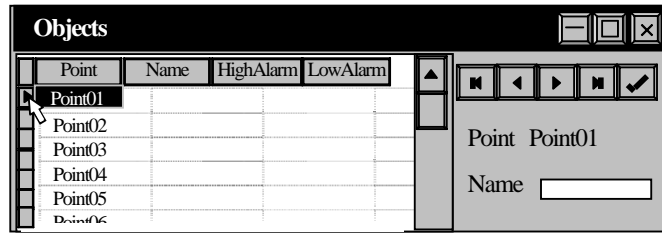
Button name	Function
(1) First record	Selects the current record to the first record (Point01).
(2) Prior record	Selects the current record to the previous record.
(3) Next record	Selects the current record to the next record.
(4) Last record	Selects the current record to the last record (Point30).
(5) Post edit	Writes the changes in current record to the database.

5. Multi-point monitoring

5.2 Operating the navigating buttons

The entering method of names and alarm set-points is as follows.

However, you do not need to enter names and alarm set-points if not necessary.



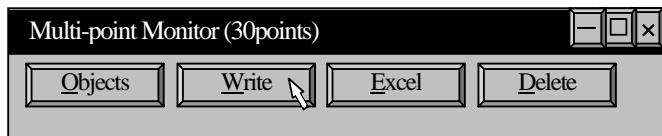
- 1) By selecting the current record to **[Point01]** (the default setting), "**Point01**" is displayed at **[Point]** column in the first line of the panel on the right side (ash background).
- 2) Move the cursor to **[Name]** (white ground) column and enter a name through the keyboard. (up to 20 characters)
- 3) By pressing **[Tab]** key on your keyboard, the cursor will move to **[High Alarm]** column.
- 4) Enter a high alarm set-point in integers.
- 5) By pressing **[Tab]** key on your keyboard, the cursor will move to **[Low Alarm]** column.
- 6) Enter a low alarm set-point in integers.
- 7) By click **[Post edit]** button, the entered data will be stored.
- 8) Click **[Next record]** button to set the current record at **[Point02]**.
- 9) Repeat the operation of from 2) to 7) for setting up to other Point number required.

5.3 Quit

By clicking **[Close]** button or **[X]** button (or by pressing **[C]** key on your keyboard), the screen will return to **[Multi-point Monitor (30 points)]** screen.

5.4 Write

By clicking **[Write]** button (or by pressing **[W]** key on your keyboard), the data having read from your thermometer will be written to the data table in sequence from **[Point01]**.



Remarks If the number of stored data is less than 30, the data up to that number will be written. Even if the number of stored data is more than 30, the data up to 30 will be added.

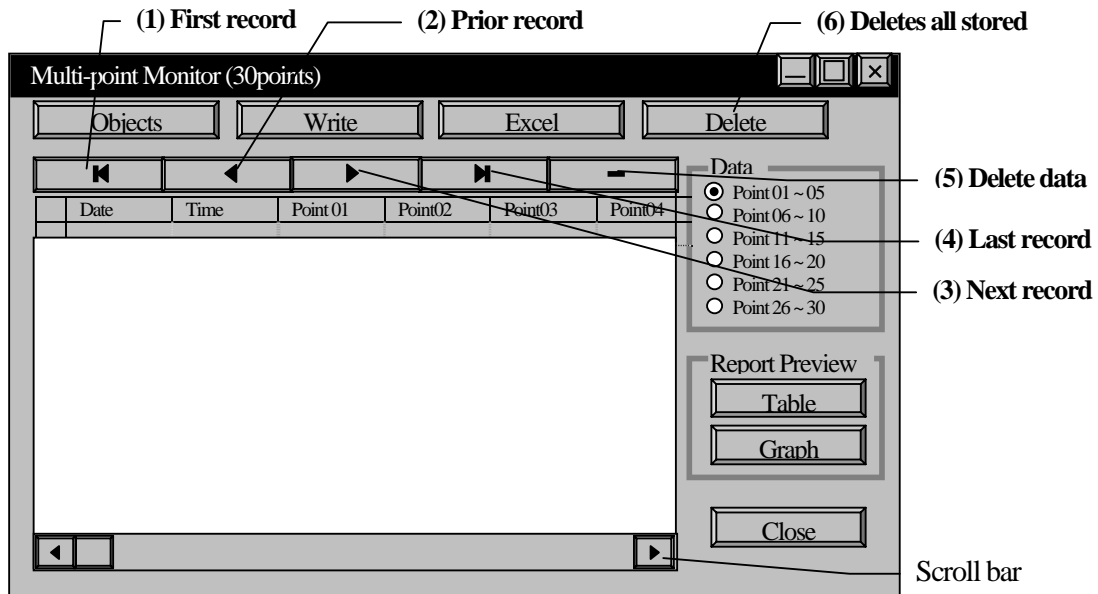
Caution Only the stored data from number 1 to 30 in your thermometer are used. Moreover, the stored data from an in-between number can not be written.

5. Multi-point monitoring

5.5 Monitoring of the data in the table

The data in the table can be monitored by using the navigating buttons and a scroll bar.

1) The functions of navigating buttons are as follows.



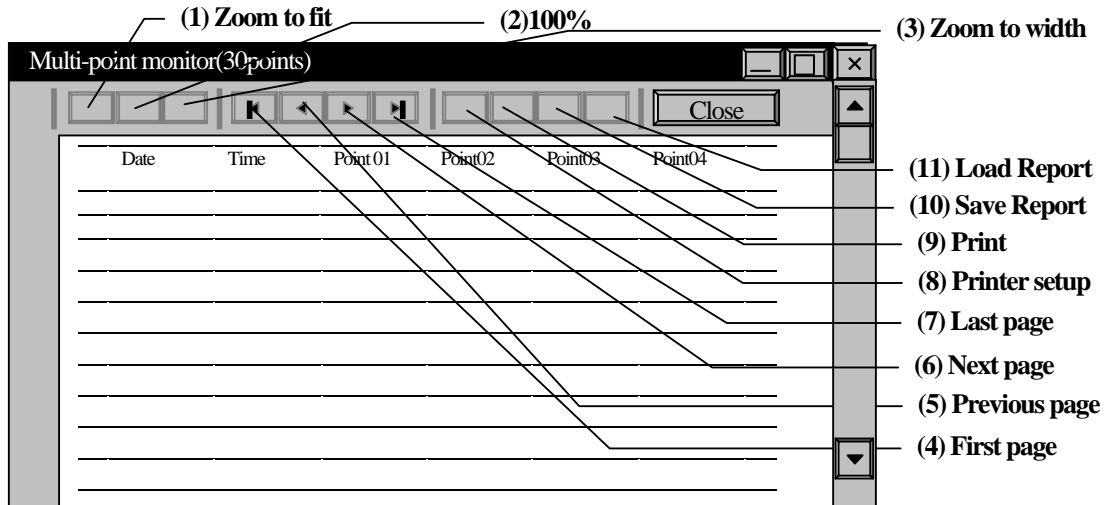
Button name	Function
(1) First record	Selects the current record to the first record (First line).
(2) Prior record	Selects the current record to the previous record.
(3) Next record	Selects the current record to the next record.
(4) Last record	Selects the current record to the last record (Newest data).
(5) Delete record	Deletes the current record (for 1 line).
(6) Deletes all stored data.	Deletes all records.

5. Multi-point monitoring

5.6 Report format of the stored data

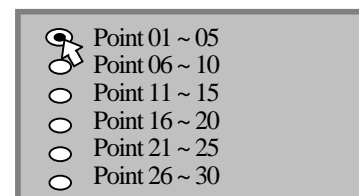
The stored data can be created and displayed in a report format, a table format or a graph format.

5.6.1 Creation of table format

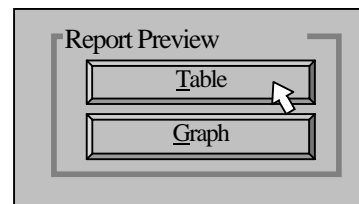


Button name	Contents
(1) Zoom to fit	Displays a report in whole page.
(2) 100%	Displays a report in normal 100% size.
(3) Zoom to width	Displays a report in full horizontal width of paper.
(4) First page	Displays the first page.
(5) Previous page	Displays the previous page.
(6) Next page	Displays the next page.
(7) Last page	Displays the last page.
(8) Printer setup	Sets up a table-format report.
(9) Print	Executes printing.
(10) Save Report	Stores a report.
(11) Load Report	Recalls a stored report.

1) A report is grouped at every 5 points. Select the required group in [Data] column.



2) Select the report format, table or graph, by pressing [Table] button or [Graph] button. (Otherwise, press [T] key or G key on your keyboard.)

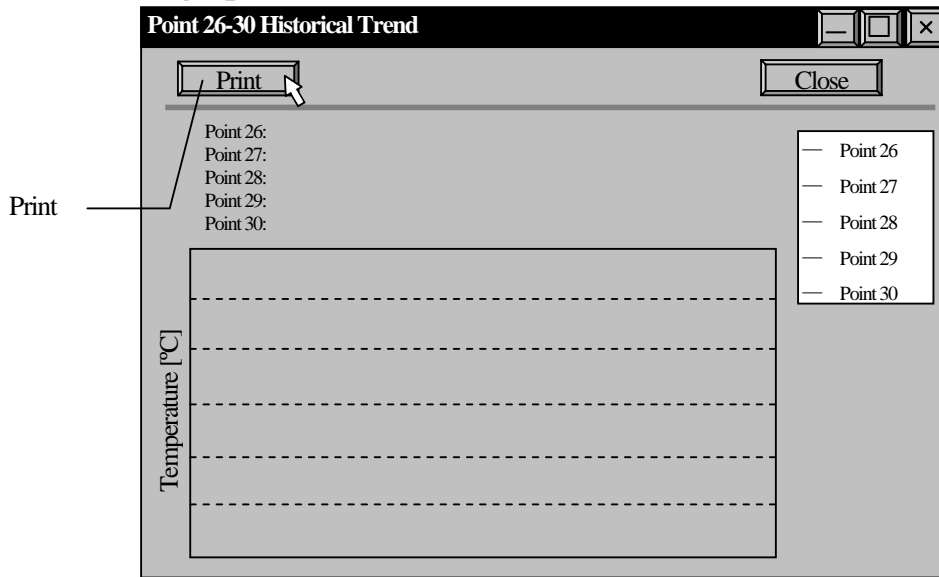


3) A report preview will be displayed, print or store if necessary.

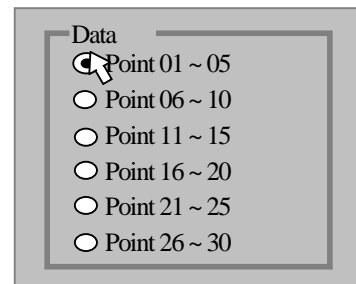
4) By clicking [Close] button or [X] button (or by pressing C key on your keyboard), the screen will return to [Multi-point Monitor (30 points)] screen.

5. Multi-point monitoring

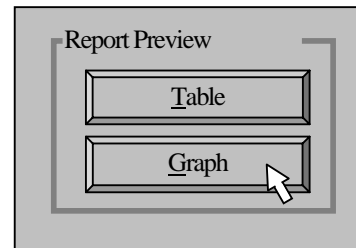
5.6.2 Creation of graph format



- 1) A report is grouped at every 5 points. Select the required group in **[Data]** column.



- 2) Select the report format, table or graph, by pressing **[Table]** button or **[Graph]** button. (Otherwise, press **T** key or **G** key on your keyboard.)



- 3) The report preview will be displayed, print or store if necessary.

Button name	Details
Print	Executes printing.

- 4) By clicking **Close** button or **X** button (or by pressing **[C]** key on your keyboard), the screen will return to **[Multi-point Monitor (30 points)]** screen.

5.7 Quit of the Multi-point Monitoring

By clicking **[Close]** button or **X** button (or by pressing **C** key on your keyboard) on **[Multi-point Monitor (30 points)]** screen, the screen will return to **[Read Memory]** screen.

6. One-point historical trend

6.1 Operating the One-point historical trend

1) By clicking [**One-point Trend**] button on the lower right (or by pressing [**T**] key on your keyboard) on the [**Read Memory**] screen, [**One-point Historical Trend**] screen will appear.

2) At first, all read data will be displayed in graph format. (All points have been selected in [**Data**] column on the upper right.) You can display the data at every 100 points or every 10 points on [**Data**] column.

3) When [**100 points**] or [**10 points**] is selected, a track bar for scrolling will appear in the panel below. Drag the slider by left-clicking the mouse for selection of the required point.

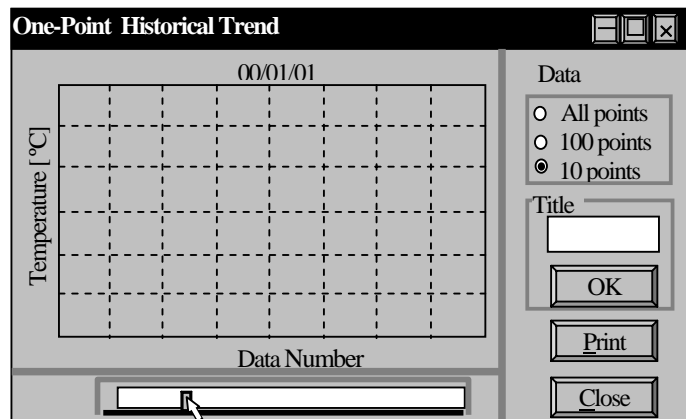
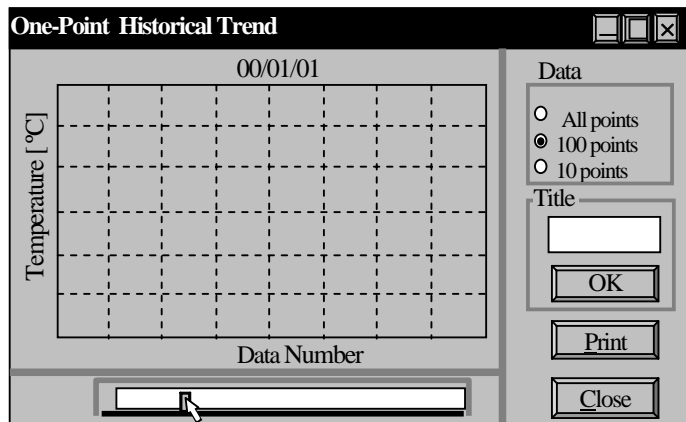
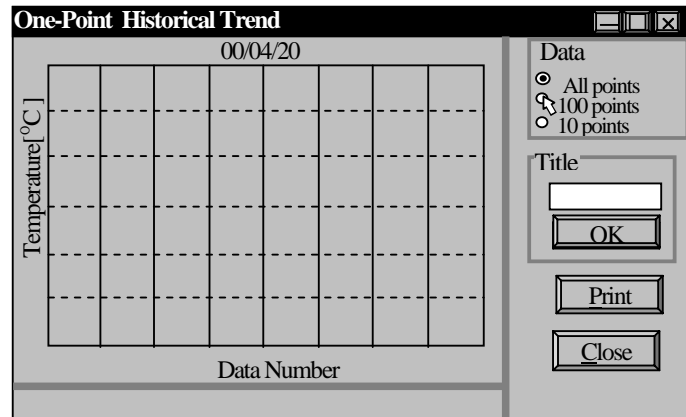
4) When [**10 points**] is selected, digital values are displayed with plotted data.

5) Type a title through your keyboard on [**Title**] column. By pressing [**Enter**] key on your keyboard and clicking [**OK**] button, the title will be displayed on the left side of date display in the upper part of graph.

6) By clicking [**Print**] button (or pressing [**P**] key on your keyboard), one copy of the graph being displayed will be printed in landscape orientation. Print the graph by specifying the printing orientation of your printer to landscape. (You do not need to change other settings of your printer.) For printing several copies, repeat the same operation up to the number of copies.

6.2 Quit of the One-point historical trend

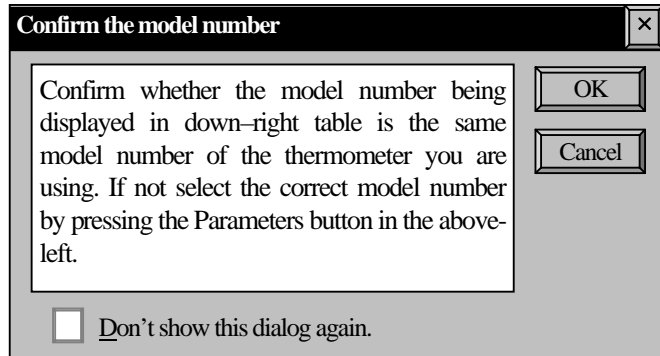
By clicking [**Close**] button or **X** button (or by pressing [**C**] key on your keyboard) on [**One-point Historical Trend**] screen, the screen will return to [**Read Memory**] screen.



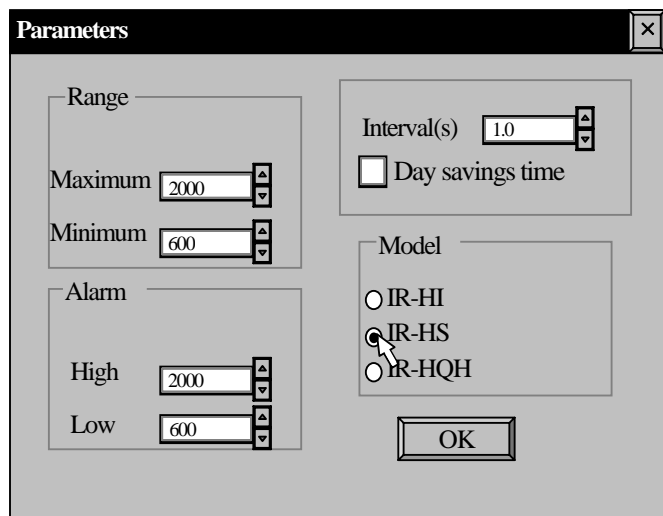
7. Real-time measurement

7.1 Measurement preparation

- 1) Connect your thermometer and your personal computer.
- 2) By clicking [**Real-time Trend**] button in the menu screen, [**Real-time Trend**] screen and [**Confirm the model number**] dialog box will appear together.



- 3) Following the message in [**Confirm the model number**] dialog box, confirm that the model number in [**Model**] column on [**Real-time Trend**] screen is same as the model number of your thermometer. After the confirmation, by clicking [**OK**] button, [**Confirm the model number**] dialog box will disappear and [**Real-time Trend**] screen will be active.

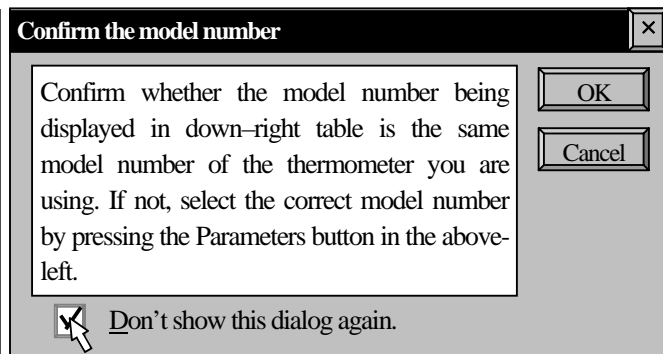


Remarks

If the model number is not same, click [**Parameters**] button (or press [**M**] key on your keyboard). [**Parameters**] dialog box will appear. Select the correct model number listed in [**Model**] column. By clicking [**OK**] button or **X** button, the screen will return to [**Real-time Trend**] screen.

Remarks

In order not to show [**Confirm the model number**] dialog box, enter a check in [**Don't show this dialog again**] check box. For canceling the check, click at the check box again. The check can be also cancelled by clicking [**Cancel**] button with the box



Remarks

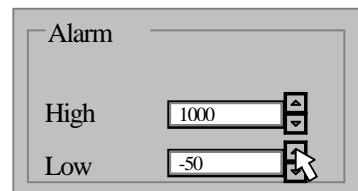
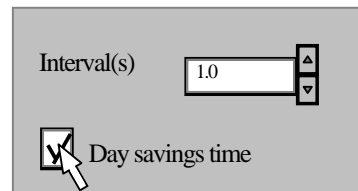
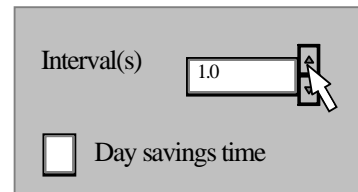
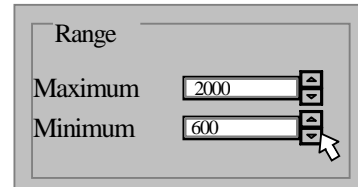
Various parameters can be set in [**Parameters**] dialog box. The setting function can be used during measurement, too.

7. Real-time measurement

7.2 Setting

Various parameters can be set in [Parameters] dialog box, except model number.

- 1) The temperature axis of display chart can be set in [**Range**] column.
The values displayed in [**Maximum**] and [**Minimum**] columns become the maximum and minimum of temperature axis. Set the values by the up/down buttons on the right side of display window (10-degree increment).
- 2) The measuring interval is able to set on your personal computer side by the up/down buttons in [**Interval(s)**] column. The measuring interval can set from the shortest 0.5 second to the longest 10 seconds by 0.1-second increment. (Default value: 1.0 second)
- 3) If [**Daylight savings time**] check box is checked, the time axis of graph becomes the daylight savings time.
- 4) The alarm set-points can be set in **Alarm** column. Set the values by the up/down buttons on the right side of **High** and **Low** columns (10-degree increment).
- 5) After you set necessary parameters, click either [**OK**] button or [**X**] button.
The screen will return to the [**Real time trend**] screen.
- 6) Press **MEAS** key while pressing key to turn the power supply of your IR-H on. (The IR-H becomes the continuous measurement mode.)
Press **MEAS** key again to start a measurement.



7. Real-time measurement

7.3 Measurement

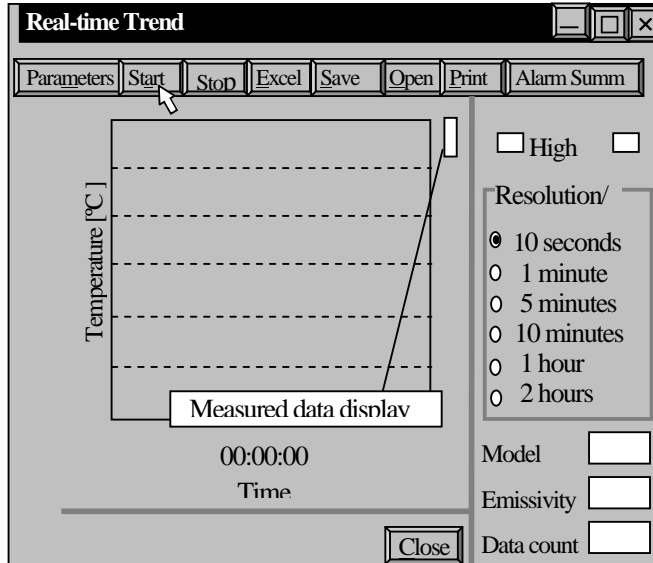
1) By clicking [**Start**] button (or by pressing **A** key on your keyboard), the measurement will start.

Display list of IR-H "UFL" "OFL"

Model	Display	
	Underflow	Overflow
IR-HI	280 (°C) or 550 (°F)	1020 (°C) or 1850 (°F)
IR-HS	580 (°C) or 1090 (°F)	2020 (°C) or 3650 (°F)
IR-HQH	380 (°C) or 730 (°F)	3020 (°C) or 5450 (°F)

Remarks When "uFL" is displayed in the main display of your IR-H (when the measured temperature does not reach to the measuring range) or when "oFL" is displayed (when the measured temperature exceeds the measuring range), the following data will be displayed and plotted on chart.

Remarks By your selection of [on] (enabled) at [Thermocouple enabled/disabled selection] with the sub marker "Tc" (Ref. 5.6.5 in the instruction manual for IR-H) of your IR-H, the temperature measured by a thermocouple will be displayed, too. When "uFL" is displayed in the sub display (when the measured data measured by a thermocouple does not reach to -50°C or -58°F) or when "oFL" is displayed (when the measured data exceeds 1220°C or 2228°F), 9999 will be displayed and the data will not be plotted on chart. If you select "oFF" (disabled), "9999" will be displayed and the data will not be plotted on chart, too.



2) You can change the chart moving speed by selecting a time per screen in [Resolution/screen] column on the right side.

Resolution/Screen

- 10 seconds
- 1 minute
- 5 minutes
- 10 minutes
- 1 hour
- 2 hours

3) If the measured data exceeds the high alarm set-point, [High] column on the upper right side is displayed in red color. If the measured data does not reach to the low alarm setpoint, [Low] column is displayed in blue color. The alarm log data (Day/time, measured temperature, alarm type) is stored in the alarm summary automatically.

Alarm status indicators:

- Low High
- Low High

Remarks The maximum number of data is 10,000 data. When the number of data becomes 10,000 data, the message shown below will appear and the data logging will be stopped forcibly.
[Out of data area !!! Measurement was stopped. For restarting the measurement, click Start button again after storing data.]

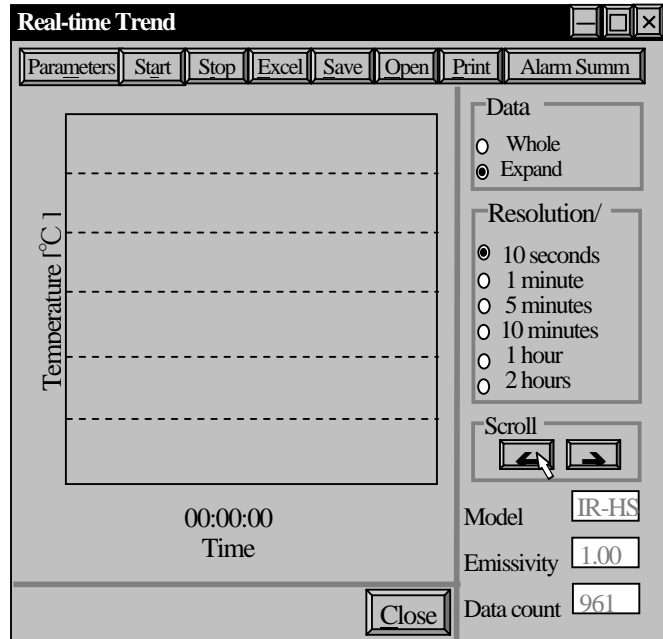
Caution If the chart is not displayed in the screen after the measurement starts, check your thermometer or the connection of communications cable.

Remarks After the measurement stops, you can measure again. On data saving, the re-measured data is stored in the same file. As the trend graph is displayed as a polygonal line graph, the data before stopping measurement and the data after re-measurement are displayed by connecting with straight lines for the time period of no data logging.

7. Real-time measurement

7.4 Stop, Save and replay

- 1) By pressing [**Stop**] button, the measurement stops and **Arrow** (scroll) buttons will appear on the lower right side. A historical data can be traced and displayed by [**Arrow**] (scroll) buttons. Click [**Arrow**] (scroll) buttons to move the screen to the measured time you want to display. The time axis will revert back by clicking [**Left arrow**] and will proceed forward by clicking [**Right arrow**]. When you want to see the historical data by magnifying the time axis, move the screen to the measured time roughly with the same chart moving speed at the time of measurement. Then, select a shorter range of chart moving speed and make fine adjustments by clicking either of [**Arrow** (scroll)] buttons. You can also compress the time axis. Click [**Arrow** (scroll)] buttons after selecting a chart speed.



- 2) By clicking [**Excel**] button (or by pressing [**E**] key on your keyboard), [**Save as**] dialog box will appear. Type a file name and click [**Save**] button. The data will be exported to Excel worksheet application with the display of [**Now exporting--**] and [**Progress status display bar**]. The exporting data is day/time and temperatures measured by your thermometer and by a thermocouple.



Caution

This function cannot be executed if Excel has not been installed. If it has not been installed, the message shown below will appear.

[**Failed to export. Confirm if Excel97 is installed.**]

- 3) By clicking **Save** button (or by pressing of [**S**] key on your keyboard), [**Save as**] dialog box will appear. Type a file name and click [**Save**] button. The data is saved with the display of [**Now saving...**] and [**Progress status display bar**]. The file extension "aht" will be assigned automatically. This file is used in replaying the stored data as shown in the next paragraph.



- 4) By clicking **Open** button (or by pressing **O** key on your keyboard), the message shown below will appear.

[**Are you sure to clear the data being displayed?**]

If you want to replay stored data, click **OK** button for **Open** dialog box. Select a file name with the file extension "aht" on **Open** dialog box and click **Open** button. The stored data will be displayed. The display contents are date, number of data, maximum temperature, minimum temperature and average temperature in addition to its trend graph. If you do not want to replay stored data, click **Cancel** button to return to the original screen. You can select the data display range (time axis) of screen, **Whole** range or **Expand** display.

Reference

If you select [**Expand**] display, you can use the chart speed selection and [**Allow** (scroll)] buttons. You can export the replayed data to Excel worksheet application, too.

- 5) By clicking **Print** button (or pressing **P** key on your keyboard), one copy of the graph being displayed will be printed in landscape orientation.

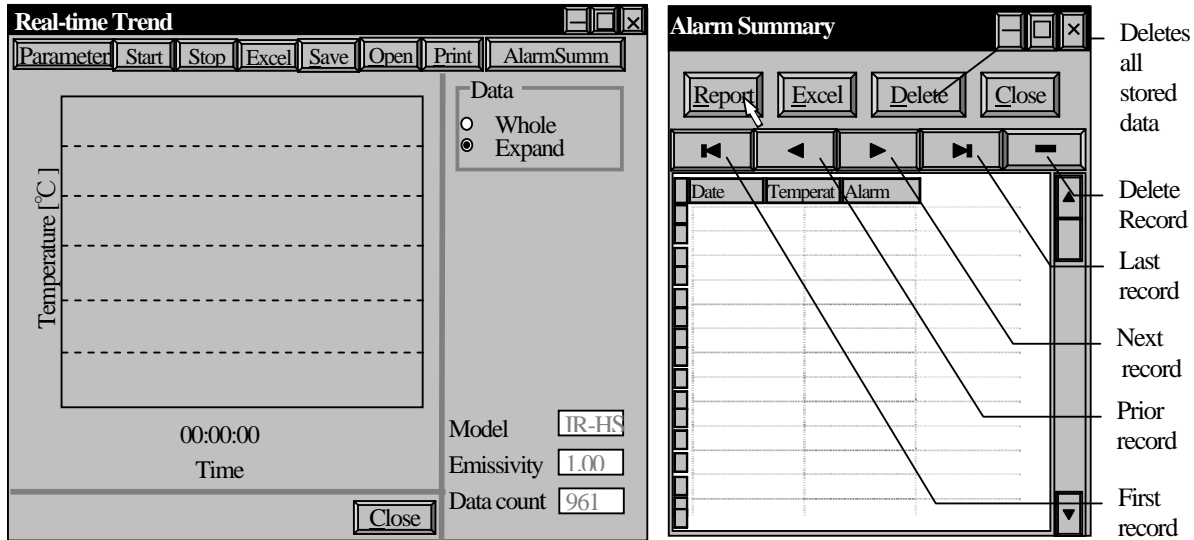
Remarks

The data displayed in the screen will be printed with the same image as displayed. Print the graph by specifying the printing orientation of your printer to landscape. (You do not need to change other settings of your printer.) For printing several copies, repeat the same operation up to the number of copies.

7. Real-time measurement

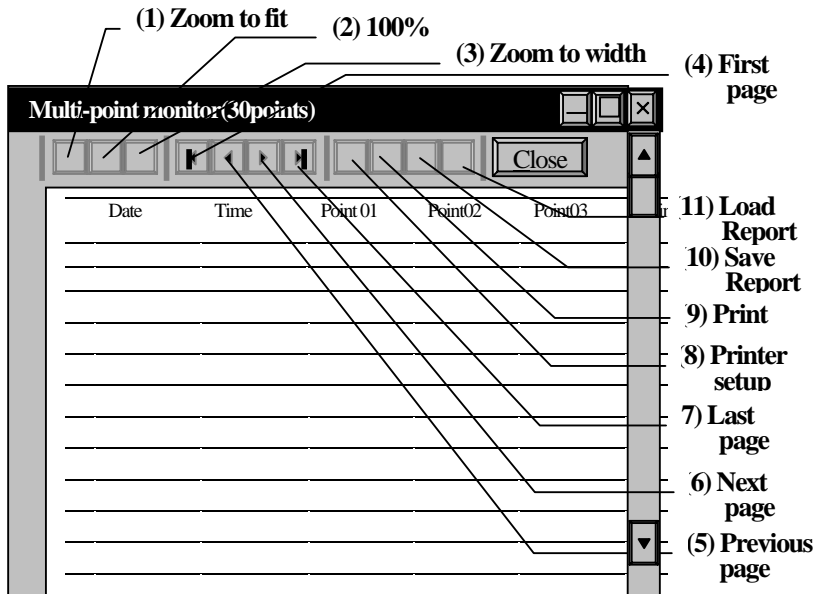
7.5 Alarm summary

1) By clicking [**Alarm Summ**] button (or pressing [**L**] key on your keyboard) in the Real-time trend screen, [**Alarm summary**] screen will appear.



Reference → The latest 100 alarm data are saved. If the data exceeds 100 data, the latest data is saved by erasing the oldest data.

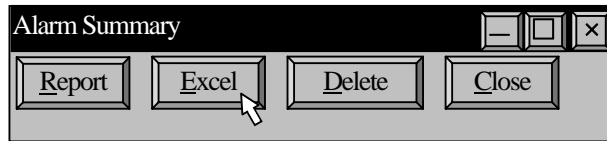
2) By clicking [**Report**] button (or pressing [**R**] key on your keyboard) in the Real-time trend screen, the preview of alarm summary report will appear.



Button name	Contents
(1) Zoom to fit	Displays a report in whole page.
(2) 100%	Displays a report in normal 100% size.
(3) Zoom to width	Displays a report in full horizontal width of paper.
(4) First page	Displays the first page.
(5) Previous page	Displays the previous page
(6) Next page	Displays the next page
(7) Last page	Displays the last page
(8) Printer setup	Sets up a table-format report.
(9) Print	Executes printing.
(10) Save Report	Saves a report.
(11) Load Report	Recalls a saved report.

7. Real-time measurement

- 3) By clicking [**Excel**] button (or by pressing **E** key on your keyboard), Save as dialog box will appear. Type a file name and click **Save** button. The data is exported to Excel worksheet application with the displays of [**Now exporting...**] and [**Progress status display bar**]. The exporting data is date/time, temperature and alarm type.



Caution This function cannot be executed if Excel has not been installed.

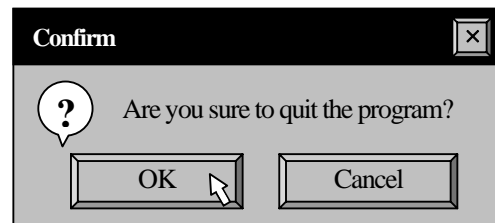
- 4) The data in the table can be monitored by using navigator buttons and the scroll bars.
5) The functions of navigating buttons are as follows.

Button name	Details
First record	Sets the current record at the first record (First line).
Prior record	Sets the current record in the previous record.
Next record	Sets the current record in the next record.
Last record	Sets the current record in the last record (Latest data).
Delete record	Deletes the current record (for 1 line).
Deletes all stored data	Deletes all records.

- 6) Maximized display (vertical orientation) is convenient for display of many data.
7) By clicking [**Close**] button or **X** button (or by pressing **C** key on your keyboard) on [**Alarm Summary**] screen, the screen will return to [**Real-time Trend**] screen.

7.6 Quit of Real-time trend

- 1) By clicking [**Close**] button or **X** button (or by pressing [**C**] key on your keyboard) on [**Real-time Trend**] screen, the message box shown below will appear.
By clicking [**OK**] button, the program will quit and the screen will return to the menu screen of Windows. (In this case, the data being displayed will be erased.)
By clicking [**Cancel**] button, the message will disappear.



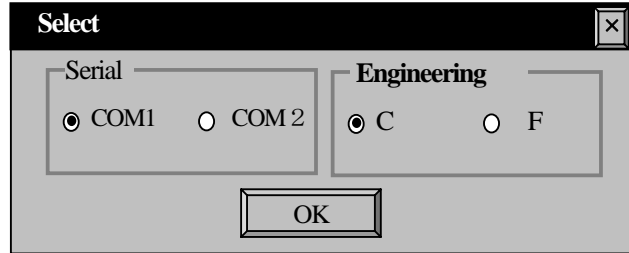
8. Parameters in saving

The following parameters are saved even after quitting the program.

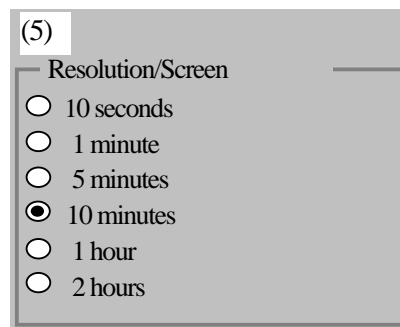
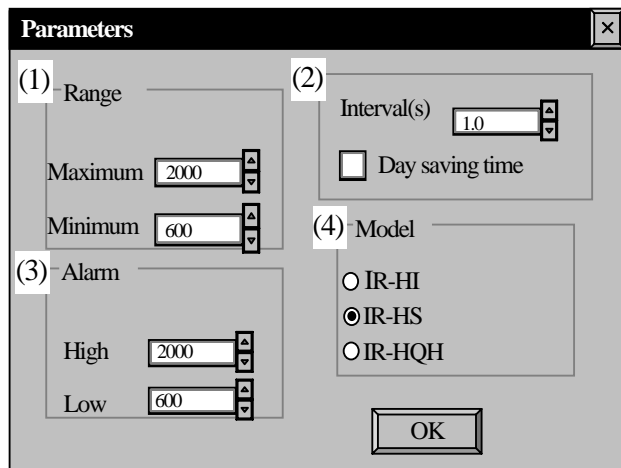
You do not reset these parameters for your next measurement or after, if you do not want to change them.

8.1 Common parameters

Parameters	Details
Serial Port	For the RS-232C communications port The default is COM1.
Engineering Units	For engineering unit for display The default is C.



8.2 Parameters on real-time measurement



Parameters	Details
(1) Range	For the measurement range of graph The defaults are maximum 2000, minimum 600.
(2) Interval(s)	For the measuring interval The defaults are 1.0 second and the daylight savings time not checked.
(3) Alarm	For the alarm set-points The defaults are 2000 for the high alarm set-point and 600 for the low alarm set-point.
(4) Model	For the model number of thermometer for measurement The default is IR-HS.
(5) Resolution /Screen	For the chart speed The default is 10 minutes.

CHINO

CHINO CORPORATION

32-8, KUMANO-CHO, ITABASHI-KU, TOKYO 173-8632

Telephone: +81-3-3956-2171
Facsimile: +81-3-3956-0915
Website: <http://www.chino.co.jp/>

