



Description

The AM-2300 offers a breakthrough in monitoring and process control. It features the basic functionality of a PLC and SCADA systems in a compact package. The AM-2300 base unit accepts a total of four inputs from direct 4-20 mA output sensors and three square pulse / frequency wave inputs from sensors such as paddle wheel or magnetic flow meters. Four relay outputs are programmable from any of the inputs also one relays can be made common to all inputs for alerting and alarming purposes. The AM-2300 can be expanded up to 16 inputs: Eight physical and eight virtual. A virtual sensor can added, for example a totalizer for a flow sensor. The unit has the ability to add simple equations, for example, a virtual sensor looking at the difference between two physical sensor measurements. More complex functions are available and can be customized at the factory. More inputs or output options are available with the purchase of an expansion card.

The AM-2300 is fully web integrated. The web-based set-up wizard makes it easy and convenient

to set up, configure and calibrate sensors from the convenience of a laptop, tablet or mobile device. Group emails, individual emails or text notifications are automated. The unit status can be viewed from any internet browser after providing a password. If you want to access the unit on site the easily navigated menu system provides for full functionality in a common sense approach.

The AM-2300 provides a low-cost solution to solve your monitoring and control requirements. It includes a data logger that stores data onto the internal SD card. Modbus/TCP communication directly to a computer, PLC system or internet Gateway is available. The unit can be panel or wall mounted with an optional NEMA 4 enclosure. No other controller has so much capability in one small package at a great price. For operators of any sized industrial or municipal facility that think monitoring or process control means expensive, the AM-2300 may be the perfect solution for both your automated control requirement and budget.

Features

- Up to 8 inputs for 4-20 mA sensors of any kind in any combination: pH, ORP, conductivity, dissolved oxygen, Chlorine, and more
- Up to 7 inputs for frequency or pulse counters, including flow sensors
- Up to 12 outputs of relays programmable for any of the inputs
- Alarm notifications by e-mail, text, and/or display for each input
- 100% web enabled from set-up to data collection to remote viewing with password protection
- Perform differential measurement from two analog inputs
- Data logging, logs are downloadable from web
- 1/4 DIN panel mounted enclosure with adapter for wall mounting
- Three levels of security to allow the appropriate access to personnel
- Expansion card slots to customize input and output options

Applications

- Process control
- Analytical or process instrumentation
- Small to medium sized manufacturers.
- Tank level monitoring



100 School Street
Andover, MA 01810
978-749-9949

Toll free - 855-747-7623
www.WaterAnalytics.net

Aquametrix AM-2300 Multi-Parameter Controller

Technical Data

Outputs

- Alarms Configurable as E-mails and/or texts for alarms, alerts, or just reminders
- Web Remote viewing with a browser on a computer, tablet, or smart phone. Remote programming from any of these.
- Datalogging Logging of CSV files. Files can be downloaded or sent via email/text message
- Digital output Modbus TCP/IP

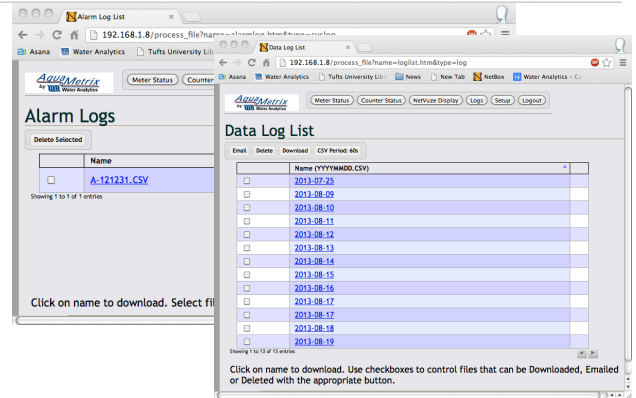
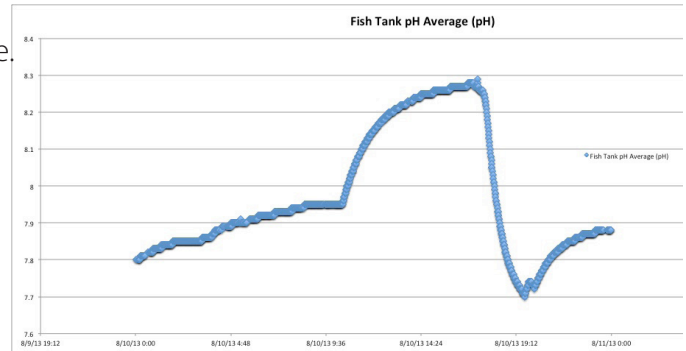
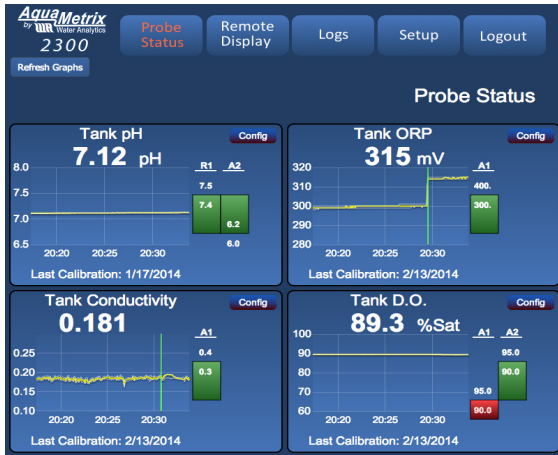
Ratings

- Current Rating 0.3 A
- Temp Rating 0 to 70 OC.
- Protection NEMA 4x Enclosure sold separately
- Safety TUV: Emissions Class A, FCC Part 15, ICES-001, Basic Immunity

Physical

- Mounting 1/4 DIN panel mount or wall mount with optional hardware
- Dimensions Front cover: 6.5" wide x 5.5" tall x 4.5" deep; panel cutout: 1/4 DIN (3.64" x 3.64")
- Weight 2 lbs.

From data log to data analysis takes less than a minute.



The web interface provides 100% web functionality from any laptop or smart device.

All logs can be downloaded remotely on a web browser. From top to bottom: Alarm logs, Data logs.

Ordering Information

Model Number	Inputs	Outputs
AM-2300-0	4X Analog 3X Contact	4X Relays
AM-2300-1	8X Analog 3X Contact	4X Relays
AM-2300-2	4X Analog 3X Contact	4X Relays 4X Analog (4-20mA out)
AM-2300-3	4X Analog 6X Contact	8X Relays
AM-2300-4	4X Analog 3X Contact	10x Relays
AM-2300-5	8X Analog	6X Relays
AM-2300-6	4X Analog 7X Contact	6X Relays
AM-2300-7	8X Analog 7X Contact	6X Relays
AM-2300-8	8X Analog	12X Relays
AM-2300-9	4X Analog 7X Contact	12X Relays
AM-2300-10	4X Analog 7X Contact	4X Analog (4-20mA out)