

# DATA LOGGERS

## Simple Logger® II TRMS Current

### Dual Channel MiniFlex® Model ML912

Two channel AC recording logger incorporates two selectable measurement ranges



#### ► SPECIFICATIONS

MODEL	ML912	
<b>ELECTRICAL</b>		
Channels	Two	
Input	Captive MiniFlex® AC Current Flexible Sensors	
Range	0.5 to 100A <sub>AC</sub>	5 to 1000A <sub>AC</sub>
Accuracy (50/60Hz)	0 to 1A unspecified 1 to 100A: ±(1% of Reading + 0.5A)	0 to 5A unspecified 5 to 1000A: ±(1% of Reading + 1A)
Resolution	0.1A	
Sample Rate	64 samples/cycle	
Storage Rate	Programmable from 8 every second to 1 every day	
Storage Modes	Start/Stop, FIFO, Extended Recording Mode (XRM™) and Alarm	
Recording Length	15 minutes to 8 weeks, programmable using DataView®	
Memory	240,000 measurement (512KB) The recorded data is stored in non-volatile memory and will be retained even if the battery is low or removed.	
Communication	USB 2.0 optically isolated	
Power Source	2 x 1.5V AA-cell Alkaline batteries (included)	
Battery Life	100 hrs to >45 days (dependent on storage rate/recording length)	
<b>MECHANICAL</b>		
Dimensions	4.95 x 2.75 x 1.28" (136 x 70 x 32mm) w/o Sensor	
Max Conductor Size	Sensor: 6" (152mm)/Cable: 6 ft (2m)	
Weight (with battery)	8.67 oz (245g)	
Case	UL94-V0	
Vibration	IEC 68-2-6 (1.5mm, 10 to 55Hz)	
Shock	IEC 68-2-27 (30G)	
Drop	IEC 68-2-32 (1m)	



#### ► FEATURES

- Includes two integral MiniFlex® flexible current probes that will measure from 0.5A to 1000A TRMS with 0.1A resolution
- Dual range 100/1000A user selectable per channel in software
- 64 samples per cycle
- Programmable storage rates from 8 every second to 1 every day
- 4 user selectable storage modes
- Stores up to 240,000 measurements in non-volatile memory
- Powered by standard Alkaline batteries
- Lightweight, compact, fits anywhere
- 5 LED indicators quickly and clearly display logger status
- Includes FREE DataView® software for data storage, real-time display, analysis and report generation
- Optically isolated USB 2.0 communication cable included
- EN 61010-1; 600V CAT IV, 1000V CAT III

#### ► APPLICATIONS

- Single and Split phase load monitoring
- Neutral and ground current monitoring
- Intermittent problem detection
- Harmonic current monitoring using DataView® software
- Machine load monitoring
- Fault current detection
- Load profiling

#### CATALOG NO. DESCRIPTION

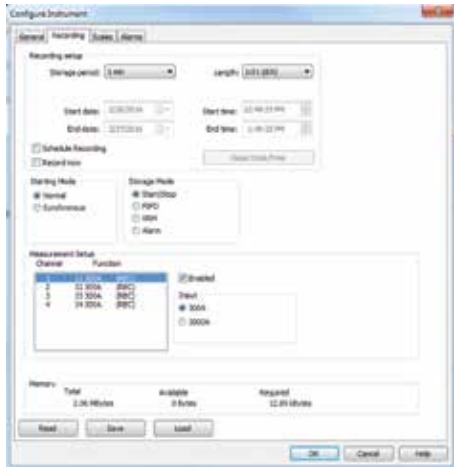
2126.37 Simple Logger® II Model ML912 (2-Channel, TRMS, MiniFlex®, 100/1000A<sub>AC</sub>, DataView® software)



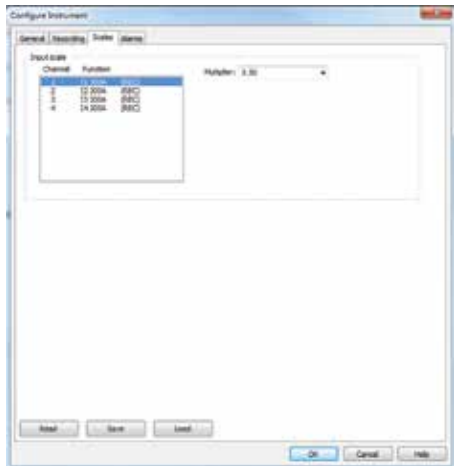
# DataView®

## Data Analysis and Reporting Software

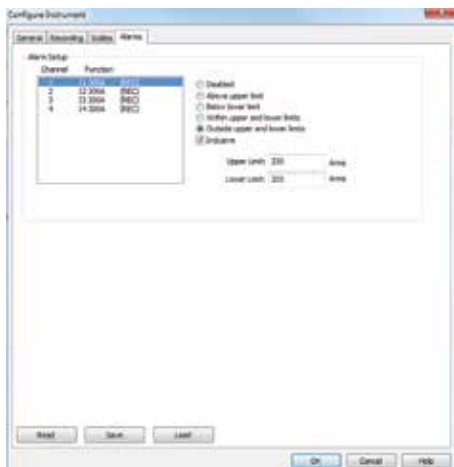
### Typical DataView® Functional Displays



Quick and simple configuration of all functions and settings from one dialog box.



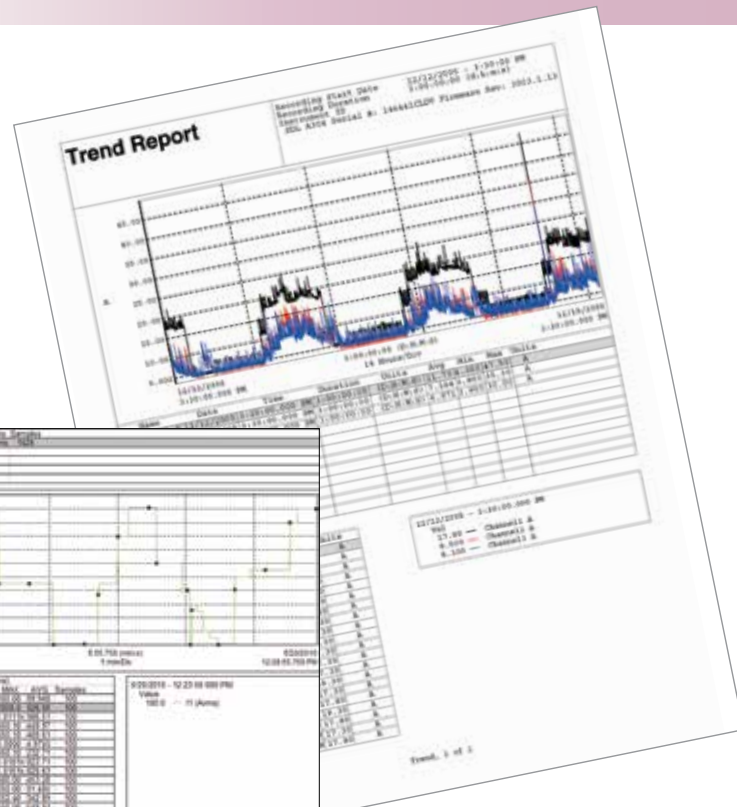
Configure scale functions.



Configure all alarm functions with straightforward selections.

### Configure all data logger functions

- Display and analyze real-time data on your PC
- Configure all data logger functions and parameters from your PC including sample rate, recording length, channel configuration and more
- Create and store a complete library of configurations that can be uploaded to the logger as needed
- Zoom in and out and pan through sections of the graph to analyze the data
- Download, display and analyze recorded data
- Display waveforms, trend graphs, harmonics (AC models) and text summaries
- Create custom views and reports
- Print reports using standard or custom templates you design
- Free software upgrades are available on our website [www.aemc.com](http://www.aemc.com)



Real-time display of all active inputs on computer through DataView® software.