

9000 SERIES

HYDRAULIC DEAD WEIGHT TESTERS — PRIMARY PRESSURE STANDARDS TO 60,000 PSI

The 9000 Series Hydraulic Deadweight Testers cover a complete pressure range up to 60,000 psi, offering a high-quality, cost-effective precision calibration source for almost any application. The 9000 Series is available in single piston or dual piston models for expanded range capabilities with either manual or motorized operation.

Included with your purchase of a Series 9000 Dead Weight Tester is a certificate traceable to NIST. Certificates traceable to NIST standards can be supplied at accuracies of 0.015% or 0.025% of reading.

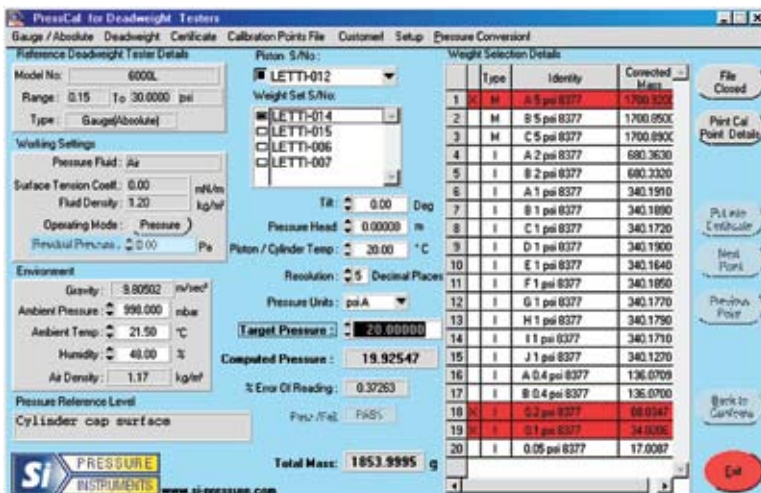


KEY FEATURES

- Precision Pressure Calibration
- Stainless Steel, Non-Magnetic Weights
- Single-Piston or Dual-Piston Models
- Corrections for Local Gravity
- Manual or Motorized Units
- Relief Valve to Protect Against Over-Pressure

PRESSCAL — GET THE BEST ACCURACY FROM YOUR DEAD WEIGHT TESTER!

PressCal will allow users to apply all necessary corrections including, gravity, temperature, pressure head, buoyancy, etc. to enhance the pressure measurement accuracy of your Deadweight Tester.



KEY FEATURES

- Menu-Driven, Easy-to-Use Software
- Fluid Media Details
- Pressure Equivalent Calculations with All Corrections
- Local and Standard Gravity Adjustments
- Pre-Loaded Calibration Data
- Automatic Production of Calibration Certificates

9000 SERIES, CONTINUED

SPECIFICATIONS

RANGE	10 to 500 up to 60,000 psi		
ACCURACY	±0.025% or 0.015% of reading		
TRACEABILITY	NIST		
WEIGHTS	Stainless steel, non-magnetic		
PRIMING	Direct via ram screw		
STANDARD CORRECTIONS	GRAVITY 9.80665 m/s ²	TEMPERATURE 20°C	AIR DENSITY 1.2kg/m ³
WEIGHT	TESTER	MASS SET	
9000	40 lbs	77-220 lbs (dependent on pressure range)	
9190	66 lbs	187.4 to 308.6 lbs	
DIMENSIONS	18.25" x 13.5" x 19" maximum		

ORDERING INFORMATION

Included in standard delivery: NIST Traceable Certificate of Accuracy, Operating Manual, Set of Stainless Steel Weights in 3 Aluminum Carrying Cases, Set of Stainless Steel Union Nuts: 3/4 BSP, 1/2 BSP and 3/8 BSP, Standard and Coned Lens Rings, 9/16" x 18 UNF Female High Pressure Adapter, Dust Cover, Spirit Level, 1 Liter Operating Fluid

MODEL		RANGE*	ACCURACY	
			0.025%	0.015%
9120-4	Single piston	10 to 500 psi	\$ 4,510	\$ 4,750
9130-4	Single piston	20 to 1000 psi	4,515	4,755
9150-4	Single piston	100 to 5000 psi	4,585	4,825
9170-4	Single piston	200 to 10000 psi	5,160	5,435
9180-4	Single piston	200 to 16000 psi	8,225	8,660
9190-4	Single piston	500 to 30000 psi	24,085	25,355
9190-HA-4	Single piston	500 to 60000 psi	29,025	30,555
M9120-4	Single piston motorized	10 to 500 psi	5,530	5,770
M9130-4	Single piston motorized	20 to 1000 psi	5,530	5,770
M9150-4	Single piston motorized	100 to 5000 psi	5,605	5,845
M9170-4	Single piston motorized	200 to 10000 psi	6,180	6,455
M9180-4	Single piston motorized	200 to 16000 psi	9,245	9,680
M9190-4	Single piston motorized	500 to 30000 psi	25,105	26,375
M9190-HA-4	Single piston motorized	500 to 60000 psi	30,045	31,575
9230-4	Dual piston	10 to 5000 psi	5,780	6,090
9250-4	Dual piston	10 to 10000 psi	6,720	7,070
9260-4	Dual piston	10 to 16000 psi	9,255	9,740
M9230-4	Dual piston motorized	10 to 5000 psi	6,800	7,110
M9250-4	Dual piston motorized	10 to 10000 psi	7,740	8,090
M9260-4	Dual piston motorized	10 to 16000 psi	10,275	11,365
421-207-41	Fractional weight set	Units: psi	310	330
CWS9000-4	Conversion weight set	Units: psi	2,380	2,505
CWS9001-4	Conversion weight set, 1100 Bar	Units: psi	2,380	2,505
PRESSCAL	Calibration software, when ordered with dead weight tester		600	600

Ranges also available in kg/cm² and bar.