

## testo 875 – the thermal imager for daily use

The thermal imager testo 875 is the reliable, solid tool for your daily use. With a temperature resolution of  $< 80$  mK, exchangeable lenses and an integrated digital camera, you discover weak spots in buildings quickly and securely with the thermal imager testo 875. You localize leakage precisely, and detect defective insulation directly.

For you, that means: You see more and have more reliability when thermographing!



## The 5 most important advantages of the **testo 875**

### 1. High image quality due to NETD < 80 mK

Thanks to a temperature resolution of < 80 mK, even the smallest temperature differences are visible with the testo 875.



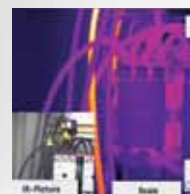
### 2. Exchangeable lenses

A wide-angle and a telephoto lens allow you the adaptation to the very different sizes and distances of measurement objects.



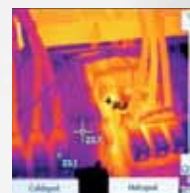
### 3. Integrated digital camera

With the testo 875, you can store a real image of every measurement site parallel to the infrared image.



### 4. Automatic Hot/Cold Spot Recognition

Critical temperature stati are directly displayed using the automatic Hot-Cold-Spot recognition



### 5. Lens protection glass

The germanium lens protection glass protects the optics from dirt and scratching.



## Technical data of the thermal imager **testo 875**

Product data	testo 875-1	testo 875-2
Image output		
Infrared		
Detector type	FPA 160 x 120 pixels, a.Si	
Thermal sensitivity (NETD)	< 80 mK at 30 °C	
Field of view / min. focusing distance	32° x 23° / 0.1 m (standard lens)	32° x 23° / 0.1 m (standard lens) 9° x 7° / 0.5 m (telephoto lens)
Geometric resolution (IFOV)	3.3 mrad (standard lens)	3.3 mrad (standard lens) 1.0 mrad (telephoto lens)
Image refresh rate	9 Hz	
Focus	manual	
Spectral range	8 to 14 µm	
Visual		
Image size / min. focusing distance	-	640 x 480 pixels / 0.4 m
Image presentation		
Image display	3.5" LCD with 320 x 240 pixels	
Display options	IR image only	IR image only / real image only / IR and real image
Video output	USB 2.0	
Colour palettes	4 options: iron, rainbow, blue-red, shades of grey	
Measurement		
Temperature range	-20 °C to 100 °C / 0 °to +280 °C (switchable)	
Accuracy	±2 °C, ±2% of m. v.. (-20 °C to +280 °C)	
Emissivity / reflected temperature compensation	0.01 to 1 / manual	
Imager equipment		
Digital camera	-	✓
Standard lens (32° x 23°)	✓	✓
Telephoto lens (9° x 7°)	-	optional
Display of surface moisture distribution	-	yes using manual input
Measuring functions		
Measurement	centre point	standard measurement (1-point)
Hot/Cold Spot Recognition	✓	✓
Image storage		
File format	.bmt; export options in .bmp, .jpg, .png, .csv, .xls	
Storage device	SD card 2 GB (approx. 1,000 images)	
Power supply		
Battery type	fast-charging, Li-ion battery can be changed on-site	
Operating time	approx. 4 hours	
Charging options	in instrument or optionally in charger, with car adapter	
Mains operation	Yes	
Ambient conditions		
Operating temperature range	-15 °C to 40 °C	
Storage temperature range	-30 °C to 60 °C	
Air humidity	20% to 80% non-condensing	
Housing protection class	IP 54	
Vibration (IEC 68-2-6)	2G	
Physical features		
Weight	approx. 900 g	
Dimensions (L x W x H) in mm	152 x 108 x 262	
Tripod mounting	yes, with adapter	
Housing	ABS	
PC software		
System requirements	Windows XP (Service Pack 2), Windows Vista, Windows 7, USB 2.0 interface	
Standards, tests, warranty		
EU Directive	2004 / 108 / EC	
Warranty	2 years	

## Ordering data **testo 875**

	testo 875-1	testo 875-2
Order no.	0560 8751	0560 8752
Detector	160 x 120 pixels	
Thermal sensitivity (NETD)	< 80 mK	
Temperature range	-20 °C to +280 °C	
Image refresh rate	9 Hz	
Standard lens 32° x 23°	✓	
Exchangeable telephoto lens 9° x 7°	-	( ✓ )
Integrated digital camera	-	✓
Display of surface moisture (via manual input)	-	✓
Auto Hot/Cold Spot Recognition	✓	

( ✓ ) Optional ✓ Standard

The imager is delivered in a robust case incl. pro software, SD card, USB cable, mains unit, Li ion rechargeable battery and tripod adapter.

### Set testo 875-2

In addition to the equipment of the testo 875-2, the set also includes:

- Telephoto lens 9° x 7°
- Lens protection glass
- Additional battery
- Fast battery charger
- Sun Shield

Part no.: 0563 8752

Save now, with the  
testo 875-2 in a set



## Accessories **testo 875**

	Order no.
<b>Fast battery charger</b> Desktop charging station for two rechargeable batteries for the optimization of the charging time	0554 8801
<b>Additional battery</b> Additional Lithium ion rechargeable battery for extending the operating time	0554 8802
<b>Lens protection glass</b> Special Germanium protective glass for optimum protection of the lens from dust and scratching	0554 8805
<b>Retrofit telephoto lens</b> (testo 875-2 only). Please contact our customer service	-
<b>Sun Shield</b> Special sun shield for the display of the thermal imager in bright surroundings	0554 8806
<b>Soft case</b> Practical carrying option for the thermal imager incl. carrying strap	0554 8814
<b>Aluminium tripod</b> Professional, extremely light and stable aluminium tripod with Quick-Release legs and 3-way tripod head	0554 8804
<b>Emissivity adhesive tape</b> Adhesive tape, e.g. for bare surfaces (roll, L.: 10 m, W.: 25 mm), $\epsilon=0.95$ , temperature-resistant to +250 °C	0554 0051
<b>Car charging adapter</b> Practical charging option for the thermal imager when travelling by car – can be used anywhere	0554 8817
<b>ISO calibration certificates</b> Calibration points at 0 °C, 25 °C, 50 °C	0520 0489
Calibration points at 0 °C, 100 °C, 200 °C	0520 0490
Freely selectable calibration points in the range -18 °C to 250 °C	0520 0495