

Features

- Compatible with most MadgeTech data loggers
- Download data from remote LAN locations
- Uses Tibbo's® software to setup a serial to Ethernet connection
- Start, stop, or check the status of any MadgeTech data logger
- Fast and user-friendly setup
- Real-time operation
- Miniature size
- CE and FCC approved

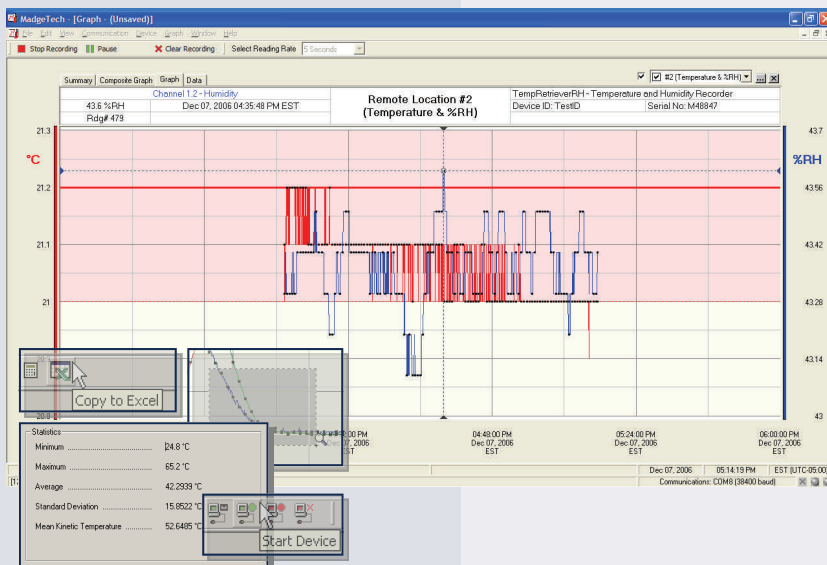


Applications

- Remote data logging
- Warehouse monitoring
- Museum monitoring
- Large facilities

The Tibbo® DS202R is an externally powered serial (RS232) to Ethernet device server. This is a compact, easy to use device that will network-enable your serial data loggers. When setup, the Tibbo® DS202R will transmit readings from a data logger which is interfaced to the Tibbo® DS202R back to the host computer where the data can be analyzed in real time. MadgeTech data loggers can be connected and disconnected without affecting the connection to a network.

The Tibbo® DS202R's small size allows it to fit almost anywhere. In addition to the ability to network-enable MadgeTech data loggers, the DS202R makes data retrieval from within-network locations quick and easy. Simply connect the device into an available Ethernet wall port or router, and the user-friendly software will handle the rest.



MadgeTech Data Recorder Software displays environmental data in an easy to use graph.

The Windows®-based software package allows the user to effortlessly collect, display and analyze data. A variety of powerful tools allow you to examine, export, and print professional looking data with just a click of the mouse.

Click [MadgeTech Software](#) for more information or to download the software.