

# HITEMP150FP-TSK

## HITEMP150 DATA LOGGER WITH FLEXIBLE PROBE AND THERMAL SHIELD



### Features

- Small diameter (2.6")
- Can withstand temperatures up to 250°C (482°F)

### Benefits

- Simple Setup and Installation
- Minimal Long-Term Maintenance
- Long-Term Field Deployment

### Applications

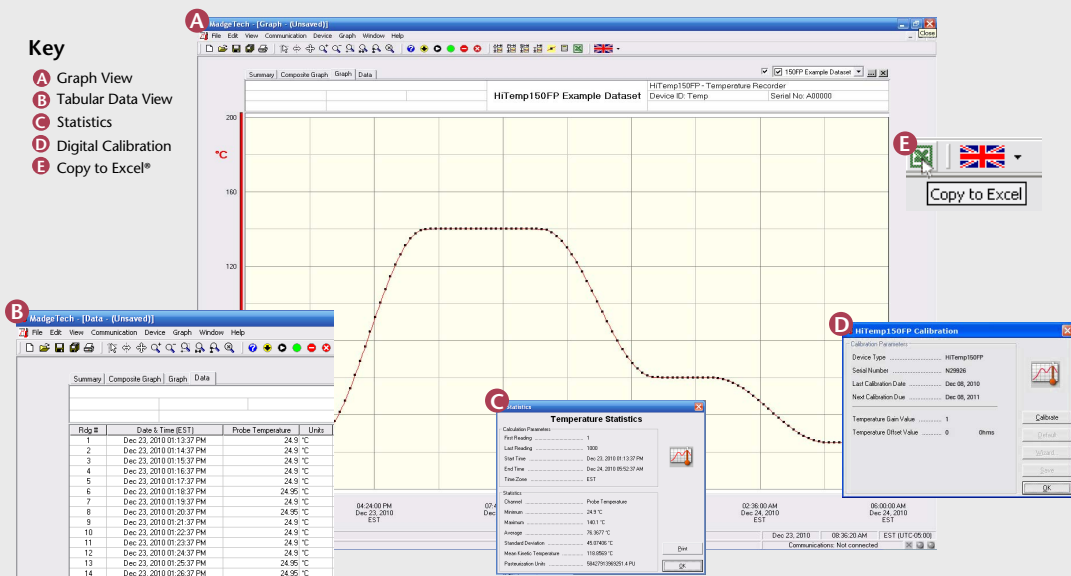
- Food processing
- Meat processing
- Extreme temperature monitoring
- Conveyor ovens

The HiTemp150FP-TSK is a kit that includes a HiTemp150FP data logger and thermal shield. This durable system can withstand temperatures up to 250°C (482°F) .

The device is easy to use, simply activate the logger and place in the monitoring area. When monitoring is complete, data can be downloaded to a computer for analysis and record keeping.

The HiTemp150FP-TSK is built for applications that require extreme temperature monitoring, such as with food and meat processing. It can be run through the entire cooking and cooling process to provide a thorough temperature profile for analysis.

## MADGETECH DATA LOGGER SOFTWARE



### Software Features:

- Multiple graph overlay
- Statistics
- Digital calibration
- Zoom in/ zoom out
- Lethality equations (F<sub>0</sub>, PU)
- Mean Kinetic Temperature
- Full time zone support
- Data annotation
- Min./Max./Average lines
- Data table view
- Automatic report generation
- Summary view
- Multilingual

# HITEMP150FP SPECIFICATIONS\*

|  |
|--|
| <b>Temperature Sensor:</b> 100Ω Platinum RTD   |
| <b>Probe Measurement Range:</b> -40 to +260°C  |
| <b>Temperature Resolution:</b> 0.05°C  |
| <b>Calibrated Accuracy:</b> ±0.5°C (Over 100°C span)   |
| <b>Start Modes:</b> Software programmable immediate start/delay start up to 6 months in advance                                |
| <b>Real Time Recording:</b> May be used with PC to monitor and record data in real time  |
| <b>Memory:</b> 32,767 readings   |
| <b>Reading Rate:</b> 1 second up to once every 12 hours  |
| <b>Lethality Equations:</b> Sterilization unit and Pasteurization units are available in the software with a click of a button |
| <b>Calibration:</b> Digital calibration through software   |
| <b>Calibration Date:</b> Automatically recorded in the device  |
| <b>Battery Type:</b> 3.6V high-temperature lithium battery included  |
| <b>Battery Life*:</b> 1 yr typical(1 min. reading rate @25°C)  |

\*The device must be sent back to MadgeTech for battery replacement.

|   |
|---|
| <b>Data Format:</b> Date and time stamped °C, °F, K, °R   |
| <b>Time Accuracy:</b> ±1 minute/month at 20°C (RS232 cable not in use)  |
| <b>Computer Interface:</b> PC serial or USB (interface cable required) 2,400 baud                                   |
| <b>Software:</b> XP SP3/Vista/Windows 7   |
| <b>Operating Environment:</b> -40 to +150°C; 0-95% RH non-condensing  |
| <b>Dimensions (Body):</b> 1.1" x 1.75" dia. (28mm x 45mm dia.)  |
| <b>Dimensions (Cable*):</b> 2.0' x .14" dia. (610 mm x 4mm dia.)  |
| <b>Dimensions (Probe Handle):</b> 1½" x 3/8" dia. (39mm x 10 mm dia.)   |
| <b>Dimensions (Probe):</b> 4" x 1/8" dia. (102mm x 4mm dia.)<br><i>(Other Probe lengths available upon request)</i> |
| <b>Material (Body &amp; Probe):</b> 316 Stainless Steel   |
| <b>Material (Cable):</b> Silicone rubber  |
| <b>Weight:</b> 9 oz (255 g)   |
| <b>Approvals:</b> CE  |

**BATTERY WARNING:** FIRE, EXPLOSION, AND SEVERE BURN HAZARD. DO NOT SHORT CIRCUIT, CHARGE, FORCE OVERDISCHARGE, DISASSEMBLE, CRUSH, PENETRATE OR INCINERATE. BATTERY MAY LEAK OR EXPLODE IF HEATED ABOVE 150° C (302° F).

\*SPECIFICATIONS ARE SUBJECT TO CHANGE WITHOUT NOTICE. SPECIFIC WARRANTY REMEDY LIMITATIONS APPLY. CALL 1-603-456-2011 OR GO TO WWW.MADGETECH.COM FOR DETAILS.

# HITEMP150FP-TSK SPECIFICATIONS\*

|  |
|--|
| <b>Operating Environment:</b> -40 to +250°C (-40 to +482°F)<br>(Time limited)<br>0 to 95% RH |
| <b>Dimensions:</b> 2.1" x 2.6" dia.<br>53.34mm x 66mm dia.                                   |
| <b>Weight:</b> 19.4 oz.  |

\*SPECIFICATIONS ARE SUBJECT TO CHANGE WITHOUT NOTICE. SPECIFIC WARRANTY AND REMEDY LIMITATIONS APPLY. CALL 1-603-456-2011 OR GO TO WWW.MADGETECH.COM FOR DETAILS.

| Ambient Temperature           | Time In Air To Max Internal Temp (150°C/302°F) |
|-------------------------------|--|
| -40 to +150°C (-40 to +302°F) | Indefinitely                                   |
| 160°C (320°F)                 | 75 mins  |
| 170°C (338°F)                 | 63 mins  |
| 180°C (356°F)                 | 55 mins  |
| 190°C (374°F)                 | 50 mins  |
| 200°C (392°F)                 | 45 mins  |
| 210°C (410°F)                 | 42 mins  |
| 220°C (428°F)                 | 39 mins  |
| 230°C (446°F)                 | 36 mins  |
| 240°C (464°F)                 | 34 mins  |
| 250°C (482°F)                 | 32 mins  |

# ORDERING INFORMATION

| MODEL              | DESCRIPTION   | PRICE (U.S.) |
|--------------------|---|--------------|
| HITEMP150FP-TSK    | HiTemp150FP with Thermal Shield   | \$549.00     |
| IFC110             | Software, manual and RS232 interface cable  | \$99.00      |
| IFC200             | Software, manual and USB interface cable  | \$119.00     |
| *NIST              | N.I.S.T. Calibration Certificate  | \$60.00      |
| SVP -Secure        | Protocols for validating the 21 CFR Part 11 ready, secure data logging system     | \$600.00     |
| SVP-Secure License | License for MadgeTech SVP-Secure Software (unlimited users, license per computer) | \$1000.00    |

**ASK ABOUT OUR OTHER DATA LOGGERS**

- Temperature
- Humidity
- Pressure
- pH
- Level
- Shock
- LCD Display
- Pulse/Event/State
- Current
- Voltage
- Wireless
- Intrinsically Safe
- Spectral Vibration
- Motion

For Quantity Discounts call 603-456-2011 or email [sales@madgetech.com](mailto:sales@madgetech.com)

\*To order the product with the N.I.S.T. certificate add -CERT to the end of the part number and add \$60.00 to the price.

