

DPS1

Heated Dew Point System



DPS1 is a heated dew point hygrometer that can measure dew points up to 95 °C (203°F) and as low as -35 °C (-31°F). This integrated system includes a microprocessor based electronics, a chilled mirror dew point sensor, a sample flow meter/valve, a 3 foot heated sample line, assorted tubing and fittings all contained in a heated, temperature controlled NEMA-4 enclosure.

Applications

- ▶ Fuel Cell Testing
- ▶ Industrial
- ▶ Furnance

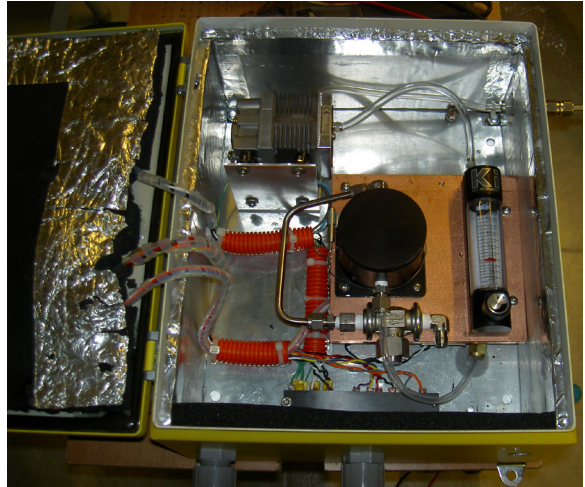
DPS1 Standard Features

- ▶ Operating temperature range: 0 to 105 °C (32 to 221°F)
- ▶ Dew Point measuring range: -35C to 95 °C (-31 to 203°F)
- ▶ Power: 90-260VAC, 50- 400Hz, 40 watts
- ▶ Microprocessor controlled
- ▶ Eight digit alphanumeric LED display
- ▶ In line filter
- ▶ 3 foot heated hose
- ▶ User programmable temperature controller
- ▶ Automatic Balance control
- ▶ Alarm relay, form C
- ▶ Outputs 4-20mA
- ▶ Sample connection: ¼ female compression tube fitting
- ▶ Sample pressure: 0 to 150 psig max
- ▶ Measurement Accuracy: +/-0.25C (+/-0.45F)

Model DPS1 SPECIFICATIONS

PHYSICAL

Dimensions: 14" x 12" x 11"
35.56cm x 30.48cm x 27.94cm
Weight: 32lbs
14.51 kg
Mounting: Wall mounted Nema 4 standard



FUNCTIONALITY

Mirror Material
Standard: Chrome
Optional: Platinum
Pressure Rating: 200psi
Sample Flow: 0.5 to 5.0 SCFH (0.25 to 2.5L/min)
Repeatability: +/- 0.05°C (0.9°F)

OPTIONS

VP Vacuum pump 115Vac or 230Vac
PT Pressure transducer kit, live pressure
RS RS232 output
SA/.1 Enhanced dew point accuracy, 0.1C traceable to NIST (Certified)

CHILLED MIRROR DEW POINT SENSORS (Required)

S-type

S1 Single stage thermo electric cooler (TEC), flow through sensor
S2 Two stage (TEC), flowthrough sensor

Depression @25°C (77°F)

45°C (113°F)
65°C (149°F)

