

Date: March 26, 2014

Product Description

The EZware-5000 software suite is used to create, edit and manage projects for Silver Series operator interface terminals (OIT). The suite includes the EasyConverter, EasyBuilder5000, Project Manager and Recipe Editor programs.

EZware-5000 Software Version 4.65.11 Update

This new version replaces the previous version (4.65.07) and is compatible with these Silver Series OITs offered by Watlow®:

- TS00-0043-0000: 4.3 inch touchscreen with USB device and 2 serial ports
- TS00-0043-E000: 4.3 inch touchscreen with Ethernet and 2 serial ports
- TS00-0070-0000: 7 inch touchscreen with USB device and host ports, Ethernet and 3 serial ports
- TS00-0100-0000: 10 inch touchscreen with USB device and host ports, Ethernet and 3 serial ports

For a full list of updates see *What's New* in EZware-5000's on-line help.

New Program and Screen Object Features

- The Modbus® RTU/TCP driver provides a slave gateway allowing the OIT to automatically route Modbus® data to any controller or OIT address used in the OIT project. Note: tag-based PLC projects are not supported by the gateway.
- Objects on Underlay Windows can be shown or hidden while editing a project using an option on the Preferences dialog (from the Option menu, choose Preferences...)
- Added a new system register, LB12050. Bit is on when an SD card is present.
- The Allen-Bradley® Tools utility programs, ABAddressImporter and Structure Editor are now included.

New Communications Driver

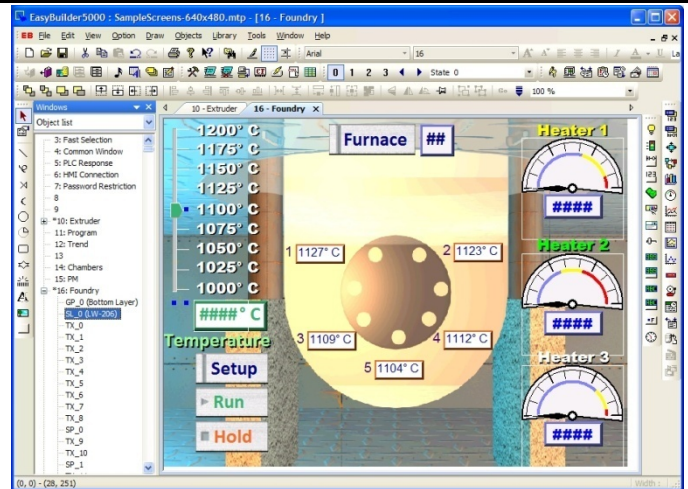
- Mitsubishi® L6ADP

New Communications Driver Features

- The BACnet® driver now supports user-specified settings for Maximum Number of Segments Accepted, Maximum ADPU Length Accepted, and Ultimate Destination MAC Layer Address.

Program Fixes

- Macros: The SetData() function works properly with the Allen-Bradley® Compact/ControlLogix® Free Tags (EthernetIP-CIP Preferred) driver and tags in the processor main task.
- Pass-through Virtual Com Port works properly under 64-bit Windows.
- The error message, "The text will exceed the size", can now be closed when the specified text does not fit in a 'pinned' object.
- The Binary Access feature in the Structure Editor now works properly.
- The (sequence of events) SOE Display object data is properly retained after changing to another window.
- An extra menu is no longer displayed after right-clicking a window thumbnail in the Window Tree.
- Extra dots (.) in the project filename no longer cause the compiler to generate incorrect font filenames.



/CONTINUED/

- The message, "Windows® 8 (Storage Space Insufficient)", no longer appears when the USB or SD device is not present, and Data Sampling or Event Logging is started within 5 seconds of the HMI starting up.

Communications Driver Fixes

- The Allen-Bradley® DH485 driver now works properly with the SLC5/03 processor.
- The Animatics SMC driver no longer behaves erratically for a few seconds after the HMI writes data to the smartmotor.
- The Omron® Ethernet/IP driver now works properly when a large number of PLC addresses is used in the EasyBuilder project.
- The address type of an imported Beckhoff® Twincat® 3 tag is now mapped correctly.

How to Upgrade: EZware-5000 is available as a free-of-charge download from the Watlow website (see Collateral below) and is also available on the *Controller Support Tools* DVD-ROM (see List Prices below).

Regarding Projects Made with Earlier Versions: Projects created with previous versions must be compiled and downloaded with the new version of EasyBuilder5000 to benefit from any of the listed updates. To make sure the OIT has the latest firmware, select the firmware option the first time you download the project.

Operating System Compatibility

- Microsoft® Windows® 7, 8, Vista and XP

List Price: \$1.00 0600-0001-0000 *Controller Support Tools* DVD-ROM (see Effective Dates)

Effective Dates: Available at www.watlow.com: March 26, 2014
Controller Support Tools DVD-ROM: est. June, 2014

Collateral

- Data Sheet: <http://www.watlow.com/downloads/en/specsheets/winoit0214.pdf>
- **Updated:** EZware-5000 software download: <http://www.watlow.com/downloads/en/software/ezware.cfm>
- **Updated:** Silver Series Installation and Operation Manual: http://www.watlow.com/downloads/en/manuals/ssoime_c.pdf
- Silver Series OIT Installation Guide: http://www.watlow.com/downloads/en/manuals/ssig_d.pdf
- Watlow Addendum to Installation and Operation Manual: http://www.watlow.com/downloads/en/manuals/ssae_d.pdf
- Sample EZ-ZONE® PM Project (800 x 480): http://www.watlow.com/downloads/en/software/ssapp01_c.zip
- Sample EZ-ZONE RM Project (800 x 480): http://www.watlow.com/downloads/en/software/ssapp02_d.zip
- Sample EZ-ZONE ST Project (800 x 480): http://www.watlow.com/downloads/en/software/ssapp03_d.zip
- Sample Barcode Reader Project (800 x 480): http://www.watlow.com/downloads/en/software/ssapp04_c.zip
- Sample EZ-ZONE RM Sample Project (480 x 272) 485: http://www.watlow.com/downloads/en/software/ssapp05_a.zip
- Sample EZ-ZONE RM Sample Project (480 x 272) Ethernet: http://www.watlow.com/downloads/en/software/ssapp06_a.zip
- Frequently Asked Questions: http://www.watlow.com/downloads/en/training/ssfaq_c.pdf
- Silver Series Secrets 1: Using a Sample Project: <http://www.watlow.com/downloads/en/training/ss01b.wmv>
- Silver Series Secrets 2: Modbus® TCP via an EZ-ZONE Gateway: http://www.watlow.com/downloads/en/training/ss02_a.wmv
- Silver Series Secrets 3: Modbus® RTU via an EZ-ZONE Gateway: http://www.watlow.com/downloads/en/training/ss03_b.wmv
- Silver Series Secrets 4: Modbus® TCP Communications w/o a Gateway: http://www.watlow.com/downloads/en/training/ss04_a.wmv
- Silver Series Secrets 5: Modbus® RTU Communications w/o a Gateway: http://www.watlow.com/downloads/en/training/ss05_a.wmv
- Silver Series Secrets 6: Logging Data from EZ-ZONE Products: http://www.watlow.com/downloads/en/training/ss06_a.wmv
- Silver Series Secrets 7: Graphing Data from EZ-ZONE Products: http://www.watlow.com/downloads/en/training/ss07_a.wmv
- Instructions for remotely monitoring a Silver Series OITs over a network or over the internet: <http://www.watlow.com/downloads/en/whitepapers/remote%20oit.pdf>

/CONTINUED/

Watlow Contacts**Customer Service**

Order Entry wincustomerservice@watlow.com 800-414-4299

Applications Engineers

Technical Support wintechsupport@watlow.com 507-494-5656

Product Manager

Sean Wilkinson swilkinson@watlow.com 408-754-3362

Distributors, all International and Diesel Industries

Andy Borkowski aborkowski@watlow.com 507-494-5382

Analytical, Medical, Furnace, Oven and Chambers

Steve Burt sburt@watlow.com 507-494-5350

Integrated Systems, Semiconductor, Packaging, Plastics, Photo and General Industries

Monica Dickson mdickson@watlow.com 507-494-5391

Food, Energy Process, Aerospace and HVAC Industries

Jason Waters jwaters@watlow.com 507-494-5579

Allen-Bradley[®] CompactLogix[®], and ControlLogix[®] are a registered trademarks of Rockwell Automation, Inc.
BACnet[®] is a registered trademark of American Society of Heating, Refrigerating and Air-Conditioning Engineers
Beckhoff[®] and TwinCAT[®] are registered trademarks of and licensed by Beckhoff Automation GmbH.
Microsoft[®] and Windows[®] are registered trademarks of Microsoft Corporation.
Mitsubishi[®] is a registered trademark of Mitsubishi Motors Corp.
Modbus[®] is a registered trademark of Schneider Automation Incorporated.
OMRON[®] is a registered trademark of OMRON Corporation
Watlow[®] and EZ-ZONE[®] are registered trademarks of Watlow Electric Manufacturing Company.