

HIGH PRESSURE TURBINE FLOW METER (HM SERIES)

Technical Specifications

MULTIPLE FLOW RANGES

.08 to 16 GPM (gal/min)

PRESSURE

Working pressure up to 15,000 psi

ACCURACY

± 0.5% of reading or better

REPEATABILITY

± 0.1%

TURN DOWN RATIO

10:1

TEMPERATURE

Fluid temperature of -150° to 450°F

FILTRATION

300 microns

END CONNECTIONS

AutoClave

MATERIALS OF CONSTRUCTION

- Body & Rotor Support: 316 Stainless Steel
- Rotor: Stainless Steel
- Bearings: Tungsten Carbide



Benefits

INDUSTRY STANDARD

End connections available on this meter include AutoClave®, Graloc®, and Techlok®.

HIGH PRESSURE SUITABLE

The HM Series of turbine flow meters can handle low viscosity fluids flowing under extremely high pressures, such as hydraulic and fuel systems and offshore chemical injection systems.

HAZARDOUS AREA APPROVED SENSORS

A complete line of hazardous area approved sensors and displays are available for the HM Series meters.

DURABLE AND COST-EFFECTIVE

This meter's rugged 316 stainless steel construction provides a durable and economic flow metering solution to sanitary environments.

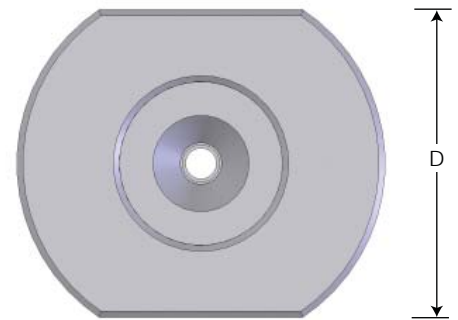
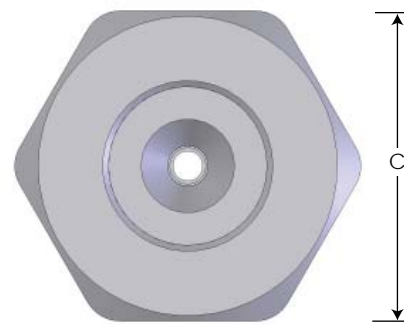
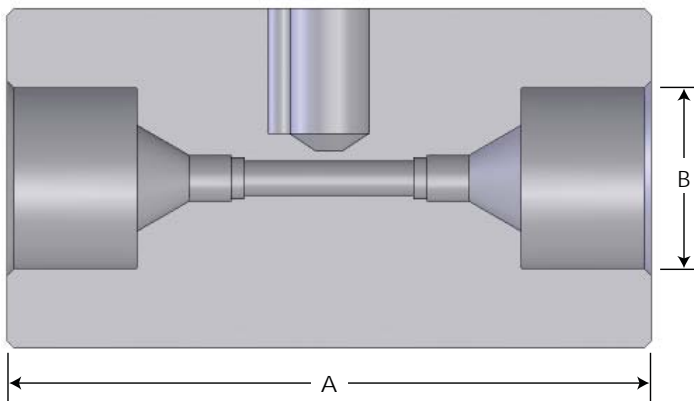
HIGH PRESSURE TURBINE FLOW METER (HM SERIES)

Meter Specifications

| Part Number | Range (gal/min) | K-Factor * (Pulses/ gal) | Frequency (0-max. Hz) | Pressure Rating (psi) |
|----------------|-----------------|--------------------------|-----------------------|-----------------------|
| HM 003/TC-AC/S | 0.08 to 0.4 | 123,000 | 800 | 15,000 |
| HM 004/TC-AC/S | 0.13 to 1.05 | 94,600 | 1,650 | 15,000 |
| HM 005/TC-AC/S | 0.2 to 1.6 | 67,400 | 1,750 | 15,000 |
| HM 006/TC-AC/S | 0.3 to 2.6 | 39,000 | 1,750 | 15,000 |
| HM 007/TC-AC/S | 0.5 to 5 | 19,000 | 1,650 | 15,000 |
| HM 009/TC-AC/S | 0.9 to 9 | 19,000 | 2,750 | 15,000 |
| HM 011/TC-AC/S | 1.6 to 16 | 9,000 | 2,400 | 10,000 |

* Average figures, exact figures can be taken from the calibration record supplied with each flow meter. Linearity: +1.0% of actual flow, HM 009: +1.5% of actual flow at 1cSt.

Meter Dimensions



HM 007 & HM 009

| Part Number | A | B | C | D |
|----------------|-------|---------|-------|-------|
| HM 003/TC-AC/S | 3.54" | 1-3/16" | 1.61" | - |
| HM 004/TC-AC/S | 3.54" | 1-3/16" | 1.61" | - |
| HM 005/TC-AC/S | 4.13" | 1-1/32" | 1.61" | - |
| HM 006/TC-AC/S | 4.13" | 1-1/32" | 1.61" | - |
| HM 007/TC-AC/S | 5.31" | 1-3/8" | - | 1.97" |
| HM 009/TC-AC/S | 5.31" | 1-3/8" | - | 1.97" |
| HM 011/TC-AC/S | 5.51" | 1-3/8" | 1.97" | - |

Sensor Options*

| Model | Sensor Type | Temp (°F) |
|-----------|-------------------------|-------------|
| VTEK/P | Pulse output sensor | -150 to 325 |
| VTEK/P-EX | 1.5 pulse output sensor | -40 to 185 |

* For additional sensors available, contact factory.

Contact Sabre Turbine Meters:

toll-free: 800-850-6110

fax: 262-884-9810

email: sabreinfo@aw-lake.com

website: www.sabreflow.com