

**DATA LOGGERS**Simple Logger® II 4-Channel *Bluetooth* Edition**4-Channel AmpFlex® Model AL834**

**Four channel logger with  
24" long flexible current  
sensors capable of  
wrapping around  
an 8" conductor**


**► SPECIFICATIONS**

MODEL	AL834	
ELECTRICAL		
Channels	Four	
Input	Captive AmpFlex® AC Current Flexible Sensors	
Range	5 to 300Aac	15 to 3000Aac
Accuracy (50/60Hz)	0 to 5A unspecified 5 to 300A: ±(1% of Reading + 0.5A)	0 to 15A unspecified 15 to 3000A: ±(1% of Reading + 1A)
Resolution	0.1Aac	0.5Aac
Sample Rate	64 samples/cycle	
Storage Rate	Programmable from 125ms to 1 per day	
Storage Modes	Start/Stop, FIFO, Extended Recording Mode (XRM™), Store on Alarm	
Recording Length	15 minutes to 8 weeks, programmable using DataView®	
Memory	1,000,000 measurements (2MB) The recorded data is stored in non-volatile memory and will be retained even if the battery is low or removed.	
Communication	Bluetooth connection (communicates up to 30 ft)	
Power Source	4 x 1.5V C-cell Alkaline batteries (included)	
Battery Life	Up to 180 days (dependent on storage rate/recording length)	
MECHANICAL		
Dimensions	5.904 x 5.904 x 3.568" (150 x 150 x 91mm) w/o Sensor	
Max Conductor Size	Ø 8" (203mm)	
Weight (with battery)	3.9 lbs (1.77kg)	
Case	UL94-V0	
Vibration	IEC 68-2-6 (1.5mm, 10 to 55Hz)	
Shock	IEC 68-2-27 (30G)	
Drop	IEC 68-2-32 (1m)	

**► PRODUCT INCLUDES**

Bluetooth USB adapter, twelve color-coded  
input ID markers, mounting hardware,  
4 x 1.5V C-Cell Alkaline batteries,  
USB cable for firmware updates,  
and USB stick supplied with DataView®  
software and user manual.



cover closed

**► FEATURES**

- Includes four integral AmpFlex® flexible current probes that will measure up to 3000A TRMS with 0.5A resolution
- Dual range 300/3000A user selectable per channel
- 64 samples per cycle
- Programmable storage rates from 125ms to 1 per day
- 4 user selectable storage modes
- Stores up to 1,000,000 measurements in non-volatile memory
- Powered by standard Alkaline batteries for a period of up to 180 days
- Lightweight, compact and weatherproof
- 6 LED indicators quickly and clearly display logger status
- Wireless *Bluetooth* data communication (Class 2 *Bluetooth* module included)
- Includes FREE DataView® software for data storage, real-time display, analysis and report generation
- EN 61010-1; 600V CAT IV, 1000V CAT III

**► APPLICATIONS**

- Single/Split-phase and 3-phase load monitoring
- Neutral and ground current monitoring
- Intermittent problem detection
- Harmonic current monitoring using DataView® software
- Machine load monitoring
- Fault current detection
- Load profiling

**CATALOG NO. DESCRIPTION**

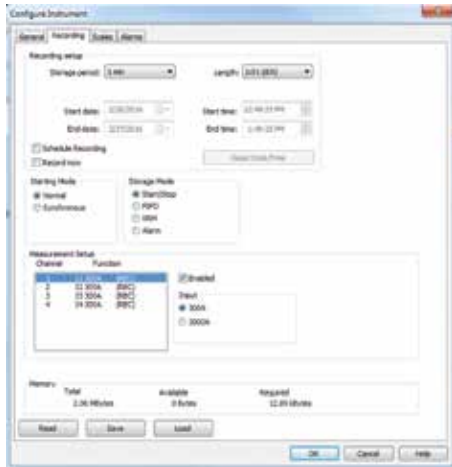
2126.14 Simple Logger® II Model AL834 (4-Channel, TRMS, *Bluetooth*, AmpFlex® 300/3000AAC, DataView® software)

# DataView®

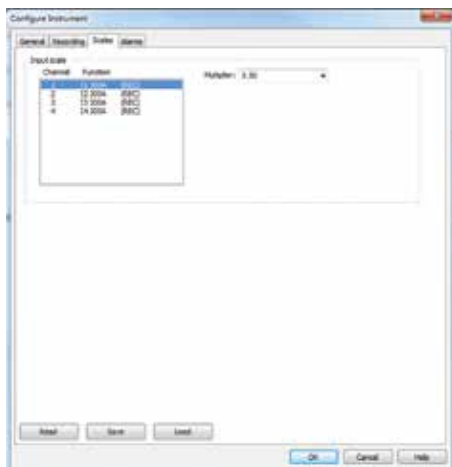
Data Analysis and Reporting Software



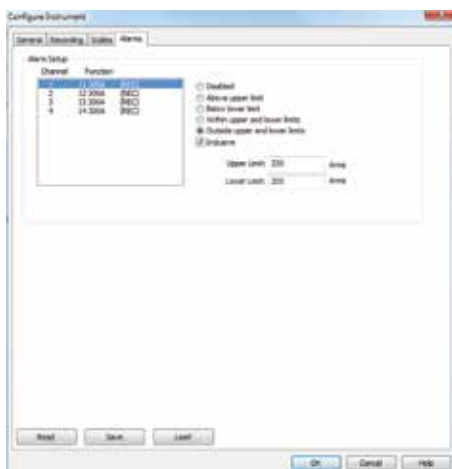
## Typical DataView® Functional Displays



*Quick and simple configuration of all functions and settings from one dialog box.*



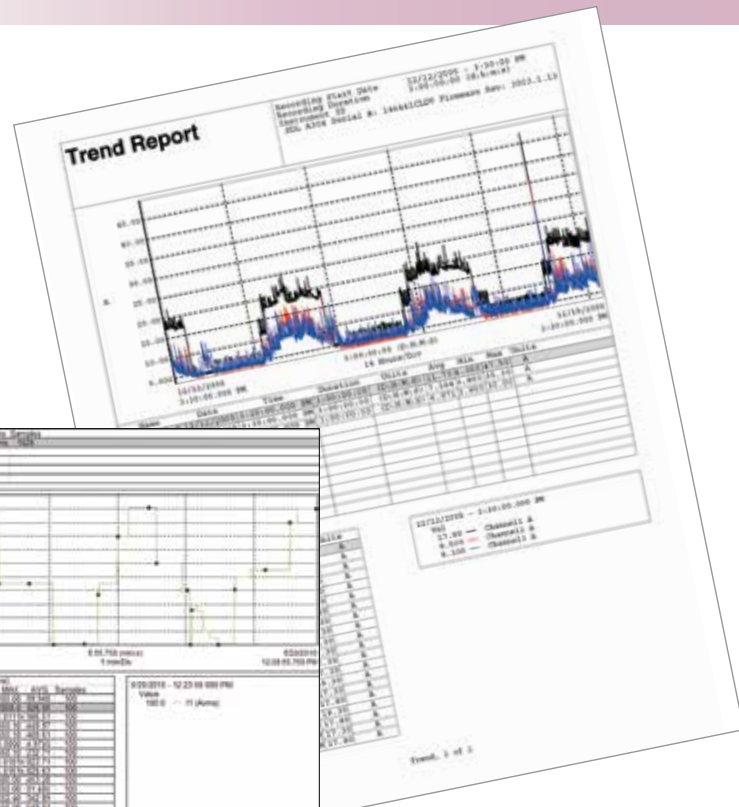
*Configure scale functions.*



*Configure all alarm functions with straightforward selections.*

## Configure all data logger functions

- Display and analyze real-time data on your PC
- Configure all data logger functions and parameters from your PC including sample rate, recording length, channel configuration and more
- Create and store a complete library of configurations that can be uploaded to the logger as needed
- Zoom in and out and pan through sections of the graph to analyze the data
- Download, display and analyze recorded data
- Display waveforms, trend graphs, harmonics (AC models) and text summaries
- Create custom views and reports
- Print reports using standard or custom templates you design
- Free software upgrades are available on our website **[www.aemc.com](http://www.aemc.com)**



*Real-time display of all active inputs on computer through DataView® software.*